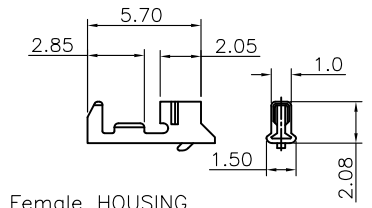
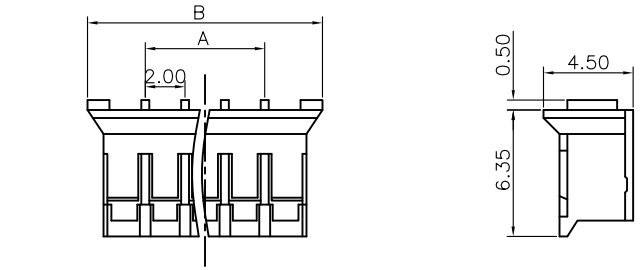


REV.	DESCRIPTION	DRAWN	CHECKED	APPROVED
A	NEW RELEASE	LJH 05/09/05'		

Female TERMINAL



Female HOUSING



Female Terminal

Wire Range		O.D of Wire
Section Area (mm ²)	AWG#	mm
0.05~0.22	30~24	0.9~1.5

NOTES:

1. MAIN SPECIFICATIONS

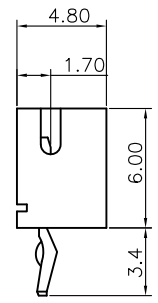
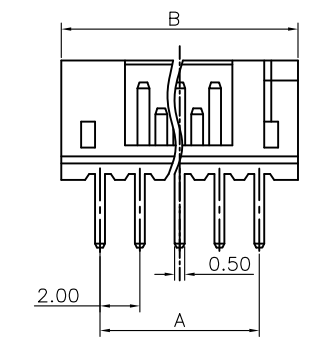
- . Housing material: NYLON 66
- . Wire range: AWG#30~#24
- . Rated voltage: 250V
- . Rated current: 1A
- . Contact resistance: ≤ 30mΩ
- . Insulation resistance: ≥ 1000MΩ
- . Withstanding voltage: 500V,AC 1 minute
- . Temperature range: -25 ~ +85°C
- . Recommend PC board thickness:1.6mm

2. PRODUCT NUMBER CODE:

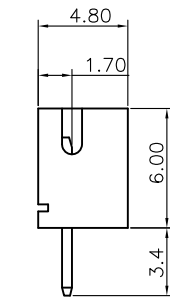
DS1066 - X X X X X X X

- └ Bend Type(R/A only)
- └ A: Type A
- └ B: Type B
- └ Contact Type
- └ X: W/O kink
- └ S: W/ kink
- └ Contact Plating
- └ 6: Tin
- └ 8: Full gold flash
- └ Housing Color
- └ W: White
- └ T: Transparent
- └ Mounting type
- └ V: V/T type
- └ C: Crimp
- └ R: Right Angle
- └ Connector type
- └ F: Female
- └ M: Male
- └ No.of contact
- └ 2 to 15

Male V/T type



W/ kink



W/O kink

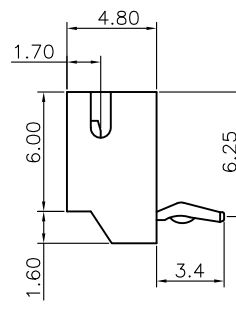
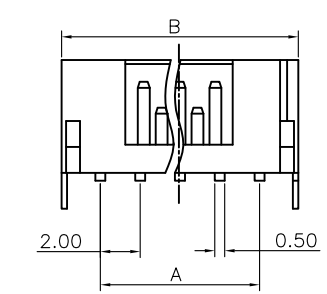
Female HOUSING

Position	DIMENSION	
	A	B
2	2.0	5.8
3	4.0	7.8
4	6.0	9.8
5	8.0	11.8
6	10.0	13.8
7	12.0	15.8
8	14.0	17.8
9	16.0	19.8
10	18.0	21.8
11	20.0	23.8
12	22.0	25.8
13	24.0	27.8
14	26.0	29.8
15	28.0	31.8

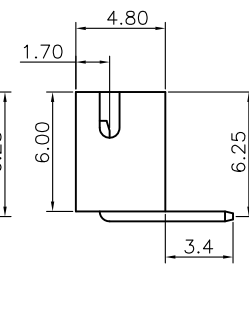
Male

Position	DIMENSION	
	A	B
2	2.0	5.9
3	4.0	7.9
4	6.0	9.9
5	8.0	11.9
6	10.0	13.9
7	12.0	15.9
8	14.0	17.9
9	16.0	19.9
10	18.0	21.9
11	20.0	23.9
12	22.0	25.9
13	24.0	27.9
14	26.0	29.9
15	28.0	31.9

Male RIGHT ANGLE



Type A




Type B

GENERAL TOLERANCE		ANGLE TOLERANCE	
X.	±0.60	X.	±5°
.X	±0.38	.X	±3°
.XX	±0.25	.XX	±2°

PROJECTION	TITLE	P.C.B CONNECTOR 2.0mm PH TYPE	
mm		SHEET SIZE	DS1066 SERIES

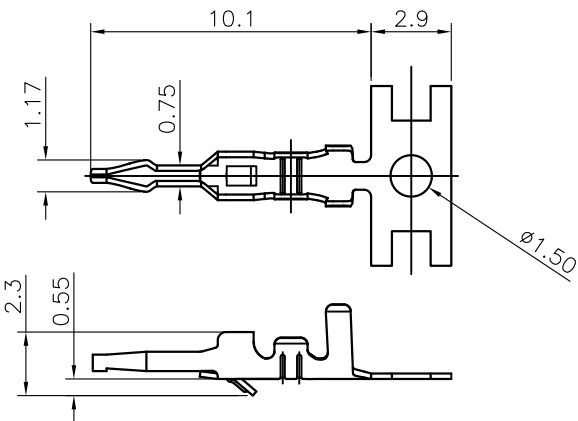
DRAWING TYPE	CUSTOMER		
SCALE	1:1	SHEET	1 OF 1
DRAWING NO.	C-DS1066-XXXXXXX		


晨翔电子有限公司
CONNFLY ELECTRONIC CO. LTD

REV.	DESCRIPTION	DRAWN	CHECKED	APPROVED
A	NEW RELEASE	LJH 06/28/05'		

Female TERMINAL

Female Terminal



Wire Range		O.D of Wire
Section Area (mm ²)	AWG#	mm
0.05~0.22	30~24	0.9~1.3

NOTES:

1. MAIN SPECIFICATIONS

- . Housing material: NYLON 66
- . Wire range: AWG#30~#24
- . Rated voltage: 250V
- . Rated current: 1A
- . Contact resistance: ≤ 30mΩ
- . Insulation resistance: ≥ 1000MΩ
- . Withstanding voltage: 500V,AC 1 minute
- . Temperature range: -25 ~ +85°C
- . Recommend PC board thickness:1.6mm

2. PRODUCT NUMBER CODE:

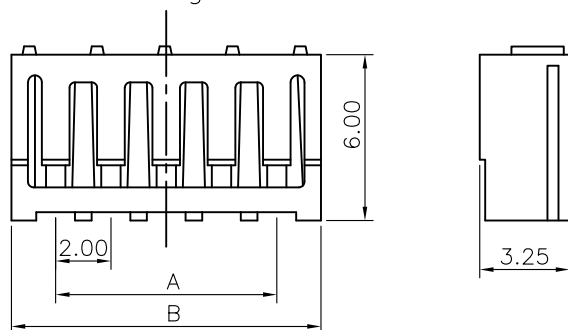
DS1067 - X X X X X

- Contact Plating
6: Tin
8: Full gold flash
- Housing Color
W: White
T: Transparent
- Mounting type
C: Crimp
- Connector type
F: Female
- No.of contact
2 to 15

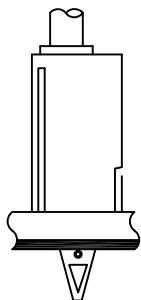
Female HOUSING

Position	DIMENSION	
	A	B
2	2.0	5.2
3	4.0	7.2
4	6.0	9.2
5	8.0	11.2
6	10.0	13.2
7	12.0	15.2
8	14.0	17.2
9	16.0	19.2
10	18.0	21.2
11	20.0	23.2
12	22.0	25.2
13	24.0	27.2
14	26.0	29.2
15	28.0	31.2

Female Housing



MOUNTING to PCB Figure



GENERAL TOLERANCE		ANGLE TOLERANCE	
X.	±0.60	X.	±5°
.X	±0.38	.X	±3°
.XX	±0.25	.XX	±2°

PROJECTION		TITLE	P.C.B CONNECTOR 2.0mm SAN TYPE	
UNITS	mm	SHEET SIZE	A4	SERIES DS1067 SERIES

DRAWING TYPE	CUSTOMER		
SCALE	1:1	SHEET	1 OF 1
DRAWING NO.	C-DS1067-XXXXX		

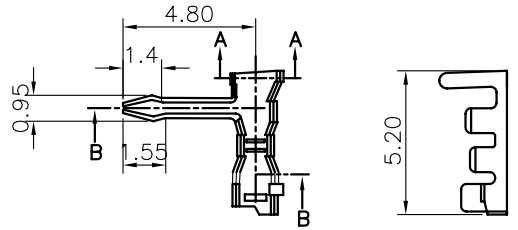
晨翔电子有限公司
CONNFLY CONNFLY ELECTRONIC CO. LTD

由 Autodesk 教育版产品制作

由 Autodesk 教育版产品制作

REV.	DESCRIPTION	DRAWN	CHECKED	APPROVED
A	NEW RELEASE	LL 07/04/06'		

Contact



NOTES:

- MAIN SPECIFICATIONS
 - Housing material: NYLON 66
 - Wire range: AWG#30~#24
 - Rated voltage: 250V
 - Rated current: 1A
 - Contact resistance: $\leq 0.01\Omega$
 - Insulation resistance: $\geq 1000M\Omega$
 - Withstanding voltage: 500V,AC 1 minute
 - Temperature range: $-25 \sim +85^{\circ}C$
 - Recommend PC board thickness: 1.2~1.6mm

HOUSING

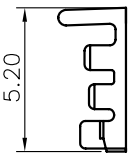
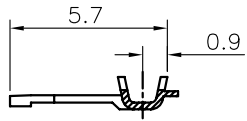
Position	DIMENSION	
	A	B
2	2.0	5.2
3	4.0	7.2
4	6.0	9.2
5	8.0	11.2
6	10.0	13.2
7	12.0	15.2
8	14.0	17.2
9	16.0	19.2
10	18.0	21.2
11	20.0	23.2
12	22.0	25.2
13	24.0	27.2
14	26.0	29.2
15	28.0	31.2

2. PRODUCT NUMBER CODE:

DS1067-01 - X X X X X

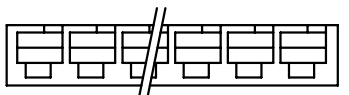
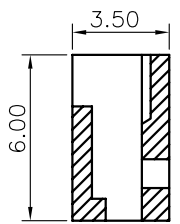
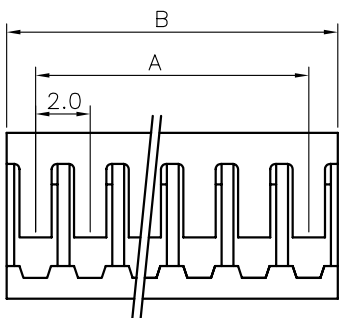
- Contact Plating
 - 6: Tin
 - 8: Full gold flash
- Housing Color
 - W: White
 - T: Transparent
- Mounting type
 - C: Crimp
- Connector type
 - F: Female
- No.of contact
 - 2 to 15

Housing



SECTION B-B

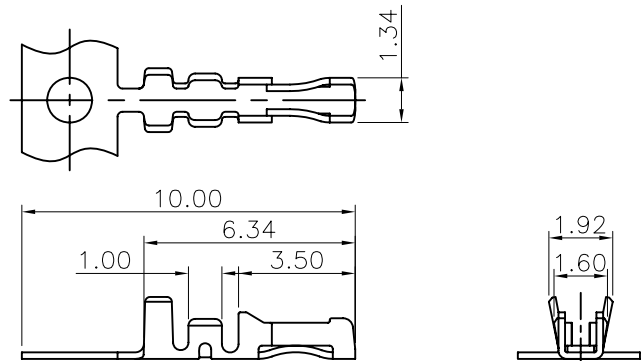
SECTION A-A



GENERAL TOLERANCE		ANGLE TOLERANCE		PROJECTION		TITLE	P.C.B CONNECTOR 2.0mm SANW TYPE	
X.	±0.60	X.	±5°	UNITS	mm	SHEET SIZE	A4	SERIES DS1067-01 SERIES
.X	±0.38	.X	±3°	晨翔电子有限公司 CONNFLY CONNFLY ELECTRONIC CO. LTD				
.XX	±0.25	.XX	±2°					
DRAWING TYPE		CUSTOMER						
SCALE		1:1	SHEET 1 OF 1					
DRAWING NO.		C-DS1067-01-XXXXX						

REV.	DESCRIPTION	DRAWN	CHECKED	APPROVED
A	NEW RELEASE	YCH 03/16/09'		

TERMINAL



NOTES:

1. MAIN SPECIFICATIONS

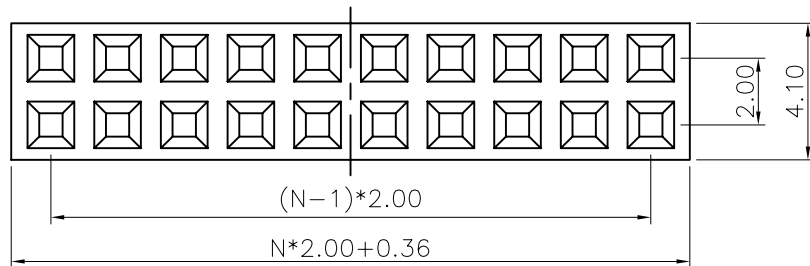
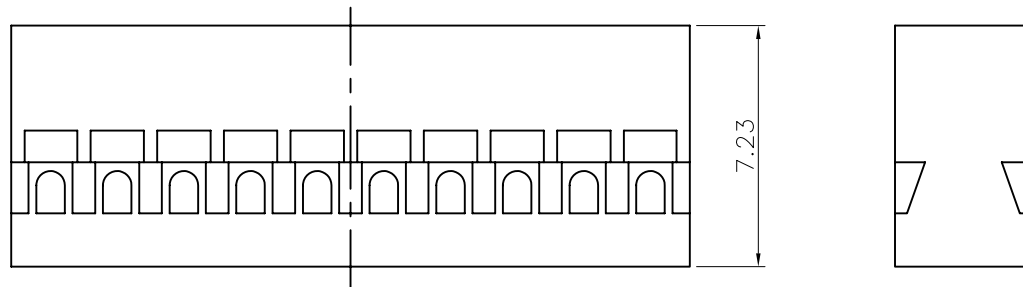
- . Rated voltage: 250V
- . Rated current: 1A
- . Contact resistance: $\leq 30m\Omega$
- . Insulation resistance: $\geq 1000M\Omega$
- . Withstanding voltage: 500V,AC 1 minute
- . Temperature range: $-25 \sim +85^{\circ}C$

2. PRODUCT NUMBER CODE:

DS1071-01 - X X X X X

- Contact Plating
- 6: Full Tin
- 8: Full Gold Flash
- Housing Color
- B: Black
- Mounting type
- C: Crimp
- Connector type
- F: Female
- No. of contact
- 1*1~1*40
- 2*1~2*40

Housing



GENERAL TOLERANCE		ANGLE TOLERANCE		PROJECTION		TITLE	P.C.B CONNECTOR 2.00mm TJC8 TYPE		
X.	± 0.60	X.	$\pm 5^{\circ}$	UNITS	mm	SHEET	DS1071-01 SERIES		
.X	± 0.38	.X	$\pm 3^{\circ}$	SHEET SIZE	A4				
.XX	± 0.25	.XX	$\pm 2^{\circ}$						
DRAWING TYPE		CUSTOMER			晨翔电子有限公司 CONNFLY CONNFLY ELECTRONIC CO. LTD				
SCALE	1:1	SHEET	1 OF 1						
DRAWING NO.	C-DS1071-01-XXXXX								