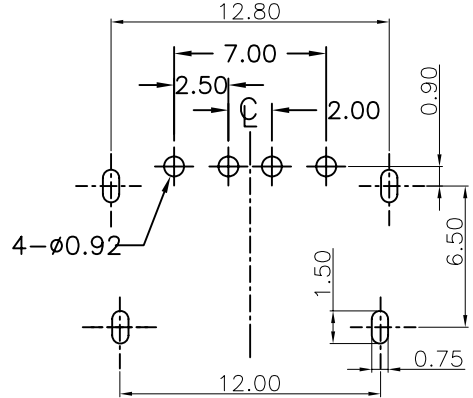
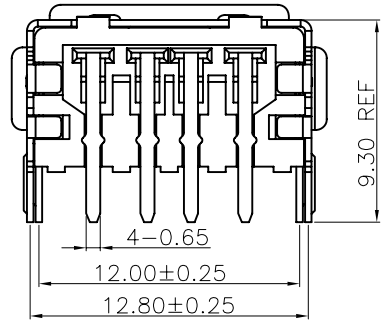
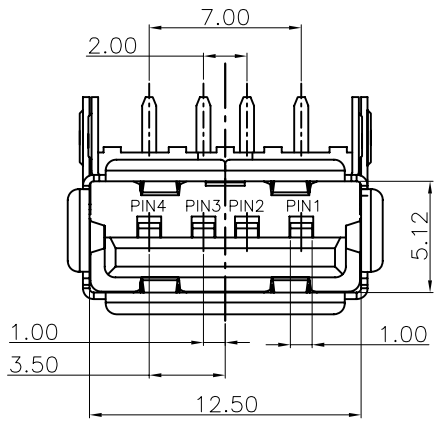
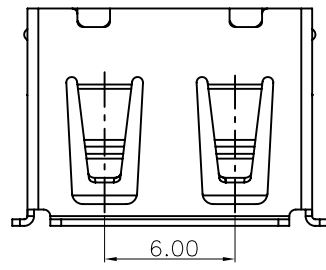
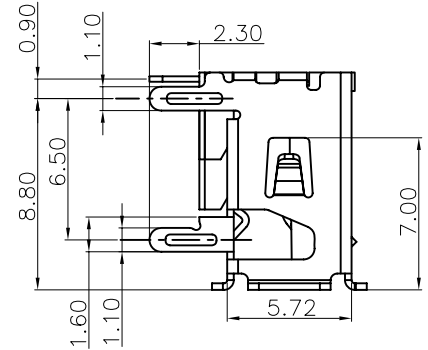
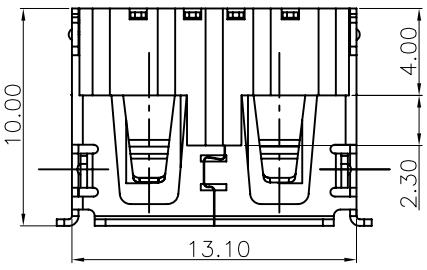


| REV. | DESCRIPTION | DRAWN | CHECKED | APPROVED |
|------|-------------|---------------|---------|----------|
| A | NEW RELEASE | LJC 12/20/07' | | |
| | | | | |
| | | | | |



RECOMMENDED PCB LAYOUT(TOP VIEW)
GENERAL TOLERANCES:±0.05




NOTE:
 1. Material:
 Housing: Thermoplastics,UL94V-0
 Contact: Copper Alloy
 Shell: Copper Alloy
 2. Specification:
 2.1: Rated current: 1.5 A
 Insulation Resistance:
 1000MΩ Min. at 500V/DC for 1Minute.
 Withstanding voltage: 500 VAC/minute
 Contact Resistance: 30 mohms Max.
 2.2: MECHANICAL
 Mating force: 35N(3.57kgf) Max.
 Unmating force(Without lock):10N(1.02kgf) Min.
 Durability: 1500 cycles Min.

3. PRODUCT NUMBER CODE:
 DS1095-06 - X X X X
 CONTACT PLATING
 0: Selective gold flash
 03: Selective gold 3u"
 30: Selective gold 30u"
 MOUNTING TYPE
 R: RIGHT ANGLE
 SHELL PLATING:
 N: Nickel
 6: Tin
 COLOR OF HOUSING:
 W: White
 B: Black
 SERIES No.
 DS1095-06

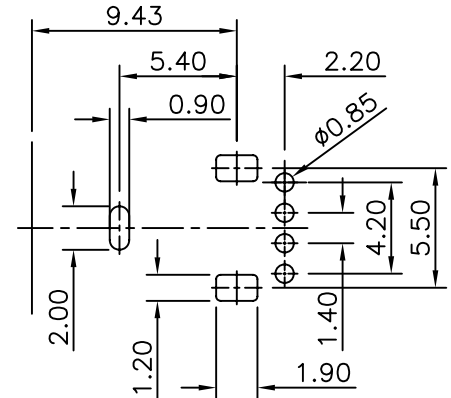
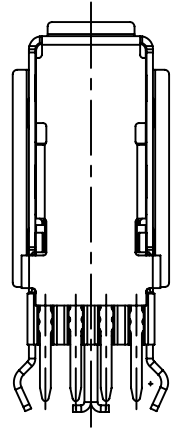
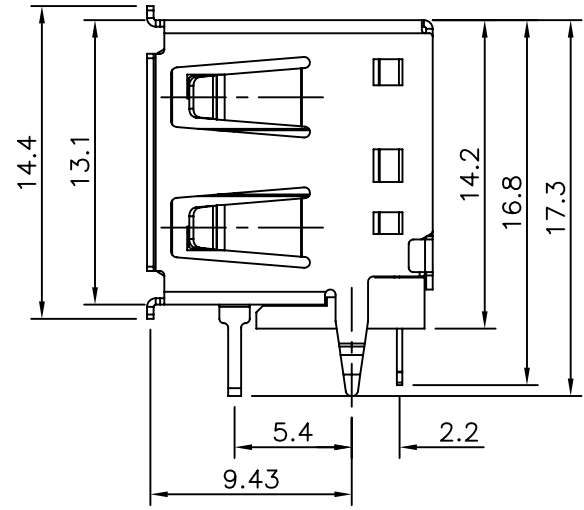
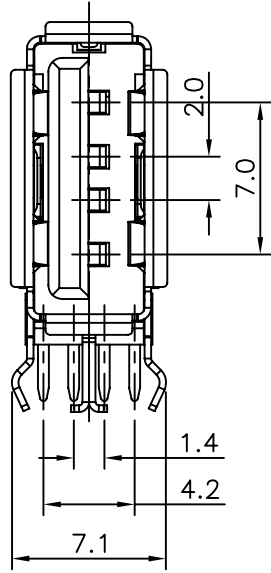
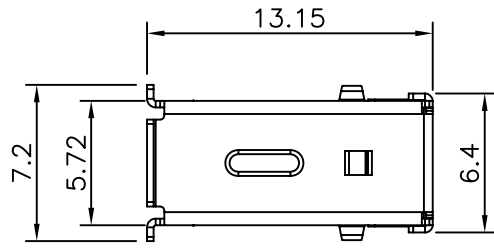
| GENERAL TOLERANCE | | ANGLE TOLERANCE | |
|-------------------|-------|-----------------|-----|
| X. | ±0.60 | X. | ±5° |
| .X | ±0.38 | .X | ±3° |
| .XX | ±0.25 | .XX | ±2° |

| PROJECTION | TITLE | USB Female A TYPE SMT series | |
|------------|-------|------------------------------|------------------|
| UNITS | mm | SERIES | DS1095-06 SERIES |

| DRAWING TYPE | CUSTOMER | | |
|--------------|------------------|-------|--------|
| SCALE | 1:1 | SHEET | 1 OF 1 |
| DRAWING NO. | C-DS1095-06-XXXX | | |

 **晨翔电子有限公司**
CONNFLY CONNFLY ELECTRONIC CO. LTD

| REV. | DESCRIPTION | DRAWN | CHECKED | APPROVED |
|------|-------------|---------------|---------|----------|
| A | NEW RELEASE | YCH 08/09/08' | ~ | |
| | | | | |
| | | | | |



NOTES:

- SPECIFICATIONS:
 - CONTACT RESISTANCE: 30mΩ max.
 - INSULATOR RESISTANCE: 1000MΩ min. AT DC 500V.
 - CURRENT RATING: 1.5A.
 - VOLTAGE RATING: 30V AC/DC.
 - DIELECTRIC STRENGTH: AC 500V FOR 1 Minute.
 - TEMPERATURE RANGE: -40°C ~ +105°C .

2. MATERIALS:

- HOUSING: THERMOPLASTIC(UL94 V-0).
- CONTACT: COPPER ALLOY
- SHELL: COPPER ALLOY.

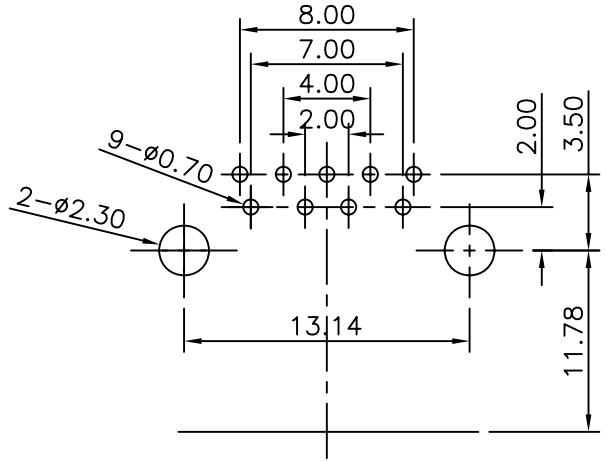
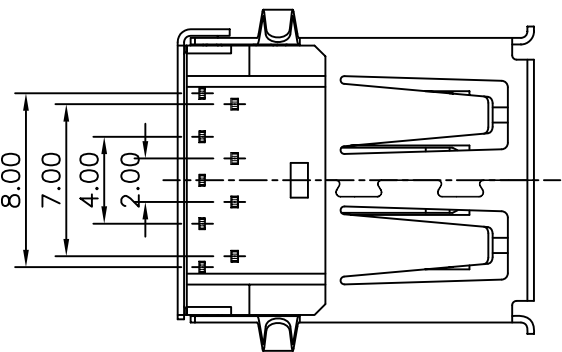
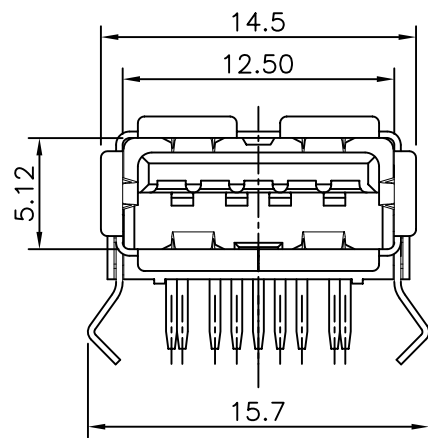
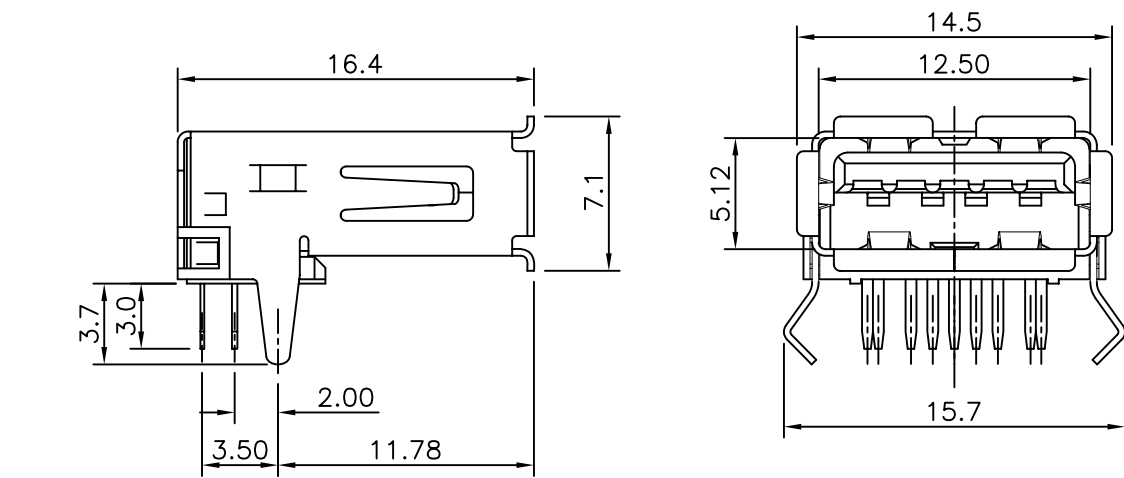
3. PRODUCT NUMBER CODE:

DS1095-07-X X X X

- CONTACT PLATING
 - 0: Selective gold flash
 - 03: Selective gold 3u"
 - 30: Selective gold 30u"
- MOUNTING TYPE
 - R: R/A
- SHELL PLATING:
 - N: Nickel
- COLOR OF HOUSING:
 - W: WHITE
 - B: Black
- SERIES No.
 - DS1095-07

| | | | | | | | | |
|-------------------|-------|------------------|--------|--|----|--------|--------------------------------|--|
| GENERAL TOLERANCE | | ANGLE TOLERANCE | | PROJECTION | | TITLE | USB A TYPE UP RIGHT ANGLE TYPE | |
| X. | ±0.60 | X. | ±5° | UNITS | mm | | | |
| .X | ±0.38 | .X | ±3° | SHEET SIZE | A4 | SERIES | DS1095-07 SERIES | |
| .XX | ±0.25 | .XX | ±2° | 晨翔电子有限公司 CONNFLY CONNFLY ELECTRONIC CO. LTD | | | | |
| DRAWING TYPE | | CUSTOMER | | | | | | |
| SCALE | 1:1 | SHEET | 1 OF 1 | | | | | |
| DRAWING NO. | | C-DS1095-07-XXRX | | | | | | |

| REV. | DESCRIPTION | DRAWN | CHECKED | APPROVED |
|------|-------------|---------------|---------|----------|
| A | NEW RELEASE | YCH 09/03/10' | ~ | |
| | | | | |
| | | | | |



RECOMMEND PCB LAYOUT
(TOLERANCE=±0.05)

NOTES:

- SPECIFICATIONS:
 - CONTACT RESISTANCE: 30mΩ(max.) INITIAL FOR VBUS AND GND CONTACTS. 50mΩ(max.) INITIAL FOR ALL OTHER CONTACTS.
 - INSULATOR RESISTANCE: 100MΩ min. AT 100V DC.
 - CURRENT RATING: 1.8A FOR VBUS PIN AND ITS CORRESPONDING GND PIN. 0.25A (MIN.) FOR ALL OTHER CONTACTS
 - VOLTAGE RATING: 30V AC/DC.
 - DIELECTRIC STRENGTH: AC 100V FOR 1 Minute.
 - OPERATING TEMPERATURE: -55°C ~ +85°C.

2. MATERIALS:

- HOUSING: THERMOPLASTIC (UL 94-0).
- CONTACT: COPPER ALLOY
- SHELL: COPPER ALLOY.

3. PRODUCT NUMBER CODE:

DS1095-05-X X X X

- CONTACT PLATING
 - 0: Selective gold flash
 - 03: Selective gold 3u"
 - 30: Selective gold 30u"

- MOUNTING TYPE
 - R: R/A

- SHELL PLATING:
 - N: Nickel
 - 6: Tin

- COLOR OF HOUSING:
 - L: Blue
 - W: White
 - B: Black

| | | | | | | | | |
|-------------------|-------|------------------|--------------|------------|---|--------|------------------|--|
| GENERAL TOLERANCE | | ANGLE TOLERANCE | | PROJECTION | | TITLE | USB 3.0 A TYPE | |
| X. | ±0.60 | X. | ±5' | UNITS | mm | | FEMALE R/A TYPE | |
| .X | ±0.38 | .X | ±3' | SHEET SIZE | A4 | SERIES | DS1095-05 SERIES | |
| .XX | ±0.25 | .XX | ±2' | | | | | |
| DRAWING TYPE | | CUSTOMER | | | 晨翔电子有限公司 CONNFLY CONNFLY ELECTRONIC CO. LTD | | | |
| SCALE | | 1:1 | SHEET 1 OF 1 | | | | | |
| DRAWING NO. | | C-DS1095-05-XXRX | | | | | | |

| REV. | DESCRIPTION | DRAWN | CHECKED | APPROVED |
|------|-------------|---------------|---------|----------|
| A | NEW RELEASE | YCH 09/04/10' | ~ | |
| | | | | |
| | | | | |

NOTES:

1. SPECIFICATIONS:

- 1.0 CONTACT RESISTANCE: 30mΩ(max.) INITIAL FOR VBUS AND GND CONTACTS. 50mΩ(max.) INITIAL FOR ALL OTHER CONTACTS.
- 1.1 INSULATOR RESISTANCE: 100MΩ min. AT 100V DC.
- 1.2 CURRENT RATING: 1.8A FOR VBUS PIN AND ITS CORRESPONDING GND PIN. 0.25A (MIN.) FOR ALL OTHER CONTACTS
- 1.3 VOLTAGE RATING: 30V AC/DC.
- 1.4 DIELECTRIC STRENGTH: AC 100V FOR 1 Minute.
- 1.5 OPERATING TEMPERATURE: -55°C ~ +85°C.

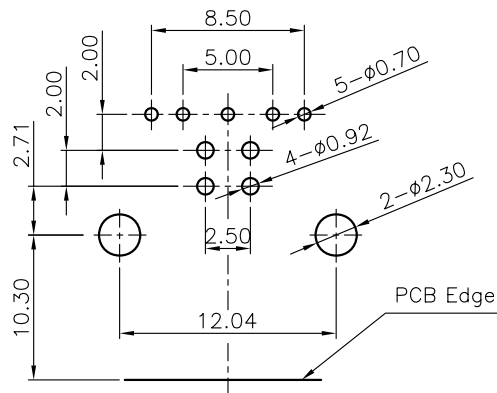
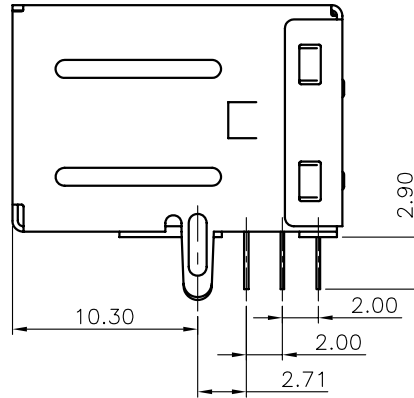
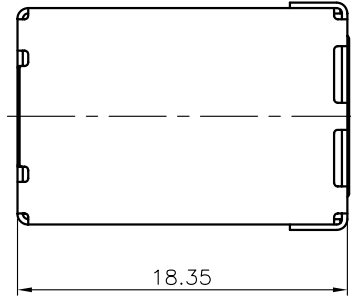
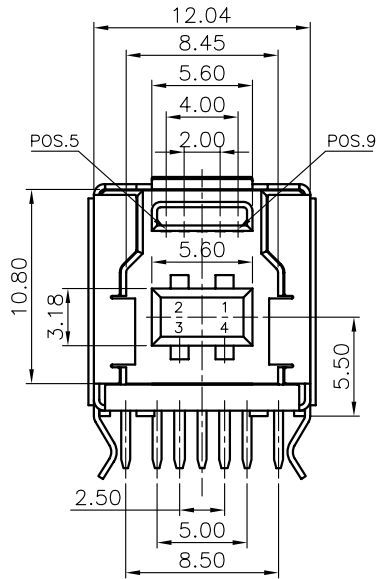
2. MATERIALS:

- 2.0 HOUSING: THERMOPLASTIC (UL 94-0).
- 2.1 CONTACT: COPPER ALLOY
- 2.2 SHELL: COPPER ALLOY.


3. PRODUCT NUMBER CODE:

DS1099-02 - X X X

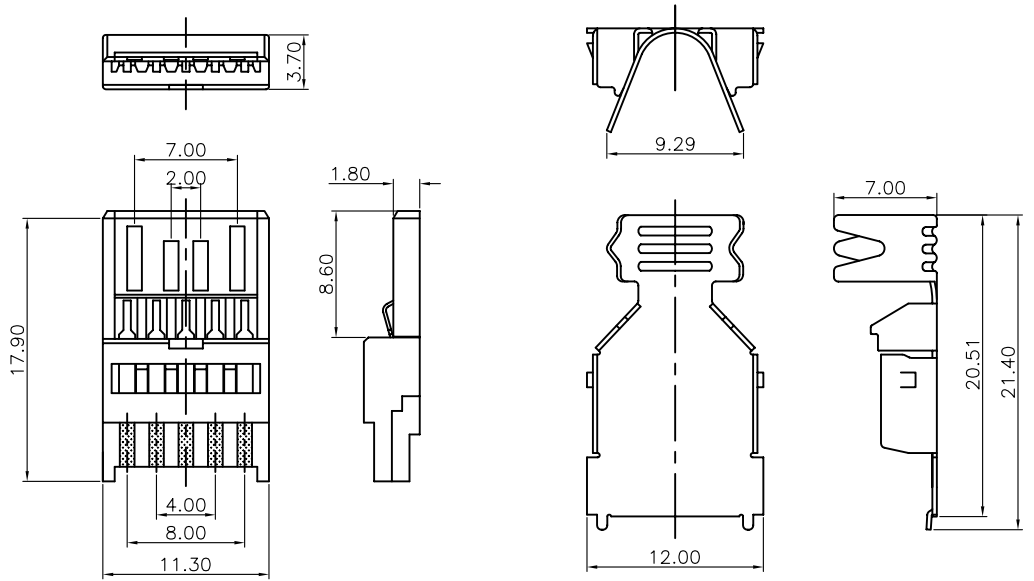
- CONTACT PLATING
 - 0: Selective Gold Flash
 - 03: Selective Gold 3u"
 - 30: Selective Gold 30u"
- SHELL PLATING
 - N: Nickel
 - 6: Tin
- COLOR OF HOUSING:
 - L: Blue
 - W: White
 - B: Black



RECOMMEND PCB LAYOUT
TOLERANCE=±0.05

| | | | | | | | |
|-------------------|-----------------|--|-------|--------|---------------------------------------|--|-------|
| GENERAL TOLERANCE | ANGLE TOLERANCE | PROJECTION | ⊕ - ▽ | TITLE | USB 3.0 B TYPE FEMALE R/A DIP TYPE | | |
| X. ±0.60 | X. ±5° | UNITS | mm | SHEET | A4 | | |
| .X ±0.38 | .X ±3° | SHEET SIZE | A4 | SERIES | DS1099-02 SERIES | | |
| .XX ±0.25 | .XX ±2° |  晨翔电子有限公司 CONNFLY CONNFLY ELECTRONIC CO. LTD | | | | | |
| DRAWING TYPE | CUSTOMER | | | | | | |
| SCALE | 1:1 | | | | | | SHEET |
| DRAWING NO. | C-DS1099-02-XXX | | | | | | |

| REV. | DESCRIPTION | DRAWN | CHECKED | APPROVED |
|------|-------------|---------------|---------|----------|
| A | NEW RELEASE | YCh 09/04/10' | ~ | |
| | | | | |
| | | | | |



Housing with contact

Upper shell

Down shell

NOTES:

- SPECIFICATIONS:
 - CONTACT RESISTANCE: 30mΩ(max.) INITIAL FOR VBUS AND GND CONTACTS. 50mΩ(max.) INITIAL FOR ALL OTHER CONTACTS.
 - INSULATOR RESISTANCE: 100MΩ min. AT 100V DC.
 - CURRENT RATING: 1.8A FOR VBUS PIN AND ITS CORESPONDING GND PIN. 0.25A (MIN.) FOR ALL OTHER CONTACTS
 - VOLTAGE RATING: 30V AC/DC.
 - DIELECTRIC STRENGTH: AC 100V FOR 1 Minute.
 - OPERATING TEMPERATURE: -55°C ~ +85°C.

2. MATERIALS:

- HOUSING: THERMOPLASTIC (UL 94-0).
- CONTACT: COPPER ALLOY
- SHELL: COPPER ALLOY.

3. PRODUCT NUMBER CODE:

DS1107-01 - X X X

- CONTACT PLATED:
 - 0: Selective Gold Flash
 - C: 3u" Gold
 - 3: 30u" Gold
- SHELL PLATED:
 - N: Nickel
 - 6: Tin
- COLOR OF HOUSING:
 - L: Blue
 - W: White
 - B: Black

| | | | | | | | | | |
|-------------------|-----------------|-----------------|--------|------------|---|--------|---------------------|--|--|
| GENERAL TOLERANCE | | ANGLE TOLERANCE | | PROJECTION | | TITLE | USB 3.0 PLUG A TYPE | | |
| X. | ±0.60 | X. | ±5° | UNITS | mm | | MALE SOLDER TYPE | | |
| .X | ±0.38 | .X | ±3° | SHEET SIZE | A4 | SERIES | DS1107-01 | | |
| .XX | ±0.25 | .XX | ±2° | | | | | | |
| DRAWING TYPE | | CUSTOMER | | | 晨翔电子有限公司 CONNFLY CONNFLY ELECTRONIC CO. LTD | | | | |
| SCALE | 1:1 | SHEET | 1 OF 1 | | | | | | |
| DRAWING NO. | C-DS1107-01-XXX | | | | | | | | |

| REV. | DESCRIPTION | DRAWN | CHECKED | APPROVED |
|------|-------------|---------------|---------|----------|
| A | NEW RELEASE | YCH 09/06/10' | | |
| | | | | |
| | | | | |

NOTES:

1. SPECIFICATIONS:

- 1.0 CONTACT RESISTANCE: 30mΩ(max.) INITIAL FOR VBUS AND GND CONTACTS. 50mΩ(max.) INITIAL FOR ALL OTHER CONTACTS.
- 1.1 INSULATOR RESISTANCE: 100MΩ min. AT 100V DC.
- 1.2 CURRENT RATING: 1.8A FOR VBUS PIN AND ITS CORESPONDING GND PIN. 0.25A (MIN.) FOR ALL OTHER CONTACTS
- 1.3 VOLTAGE RATING: 30V AC/DC.
- 1.4 DIELECTRIC STRENGTH: AC 100V FOR 1 Minute.
- 1.5 OPERATING TEMPERATURE: -55°C ~ +85°C.

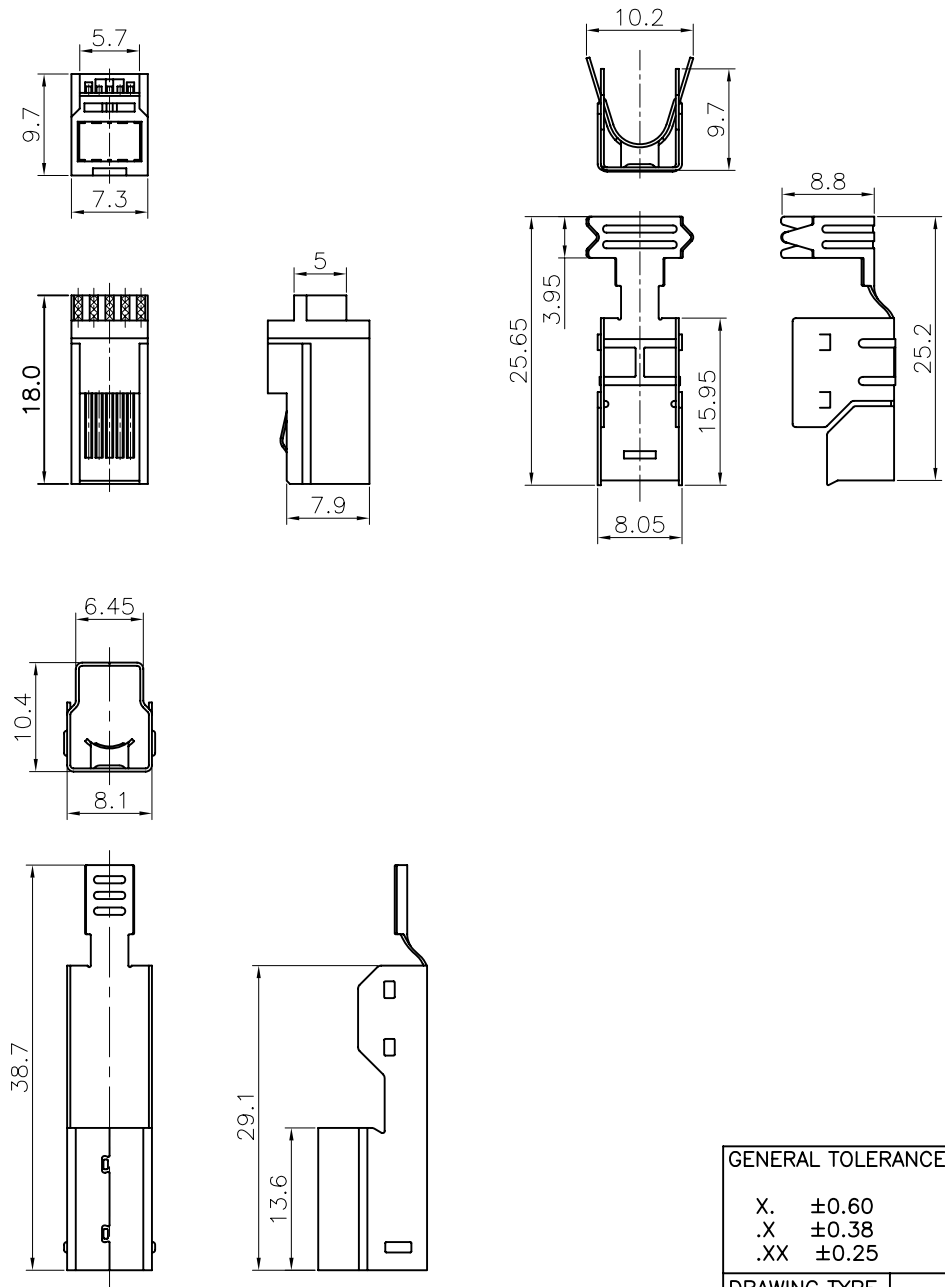
2. MATERIALS:

- 2.0 HOUSING: THERMOPLASTIC (UL 94-0).
- 2.1 CONTACT: COPPER ALLOY
- 2.2 SHELL: COPPER ALLOY.

3. PRODUCT NUMBER CODE:

DS1108-01 - X X X

- Contact plating
 - 0: selective gold flash
 - C 3u" gold
 - 3: 30u" gold
- Shell plating
 - 6: tin
 - N: nickel
 - 8: full gold
- Color of housing
 - W: white
 - B: black
 - L: Blue



| | | | | | | | | |
|-------------------|-------|-----------------|--------------|--|----|--------|---------------------------------|--|
| GENERAL TOLERANCE | | ANGLE TOLERANCE | | PROJECTION | | TITLE | USB 3.0 B TYPE MALE SOLDER TYPE | |
| X. | ±0.60 | X. | ±5° | UNITS | mm | | | |
| .X | ±0.38 | .X | ±3° | SHEET SIZE | A4 | SERIES | DS1108-01 | |
| .XX | ±0.25 | .XX | ±2° | 晨翔电子有限公司 CONNFLY CONNFLY ELECTRONIC CO. LTD | | | | |
| DRAWING TYPE | | CUSTOMER | | | | | | |
| SCALE | | 1:1 | SHEET 1 OF 1 | | | | | |
| DRAWING NO. | | C-DS1108-01-XXX | | | | | | |

| REV. | DESCRIPTION | DRAWN | CHECKED | APPROVED |
|------|-------------|---------------|---------|----------|
| A | NEW RELEASE | YCH 09/06/10' | | |
| | | | | |
| | | | | |

NOTES:

1. SPECIFICATIONS:

- 1.0 CONTACT RESISTANCE: 30mΩ(max.) INITIAL FOR VBUS AND GND CONTACTS. 50mΩ(max.) INITIAL FOR ALL OTHER CONTACTS.
- 1.1 INSULATOR RESISTANCE: 100MΩ min. AT 100V DC.
- 1.2 CURRENT RATING: 1.8A FOR VBUS PIN AND ITS CORESPONDING GND PIN. 0.25A (MIN.) FOR ALL OTHER CONTACTS
- 1.3 VOLTAGE RATING: 30V AC/DC.
- 1.4 DIELECTRIC STRENGTH: AC 100V FOR 1 Minute.
- 1.5 OPERATING TEMPERATURE: -40°C ~ +105°C.

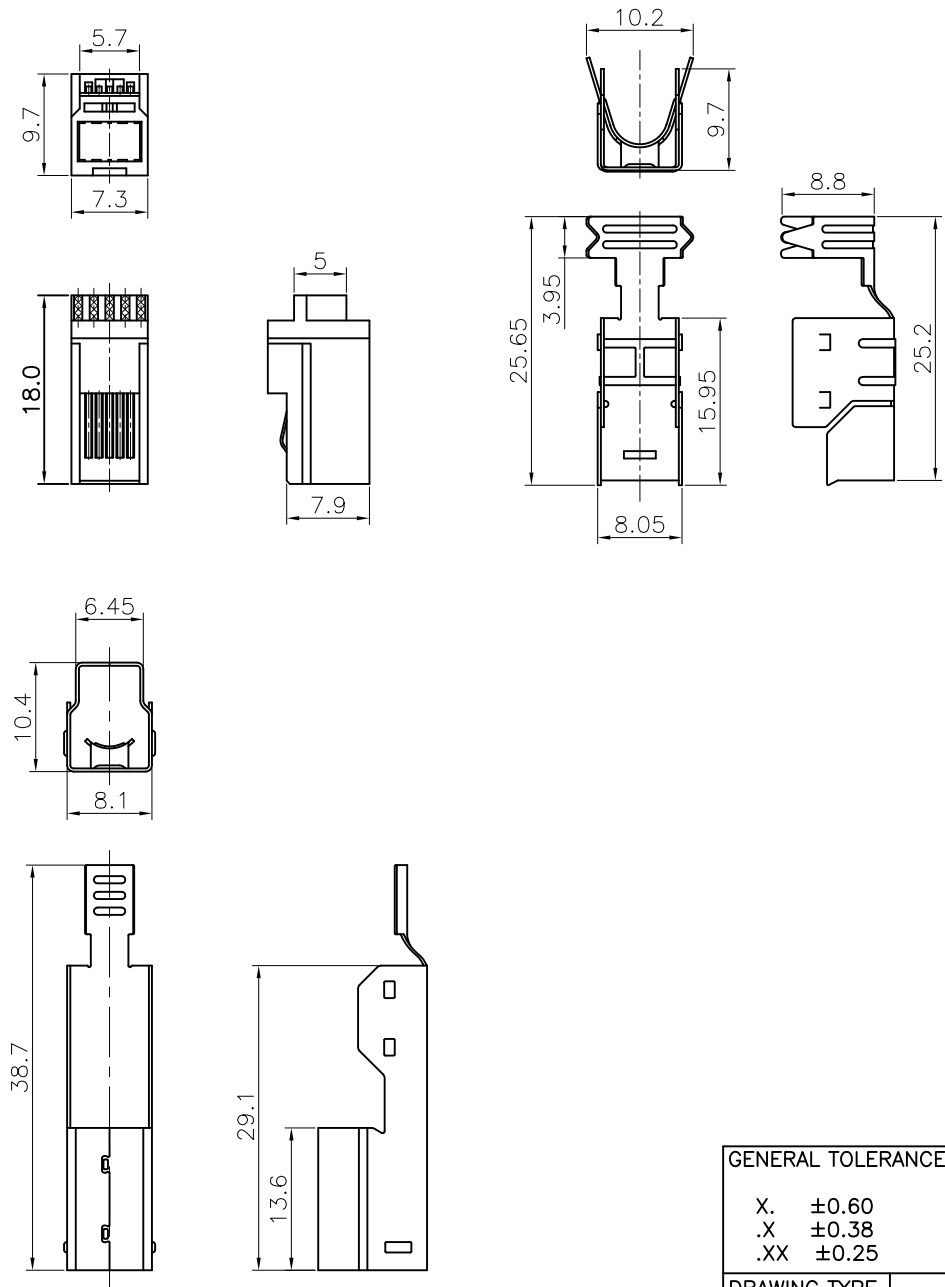
2. MATERIALS:

- 2.0 HOUSING: THERMOPLASTIC (UL 94-0).
- 2.1 CONTACT: COPPER ALLOY
- 2.2 SHELL: COPPER ALLOY.

3. PRODUCT NUMBER CODE:

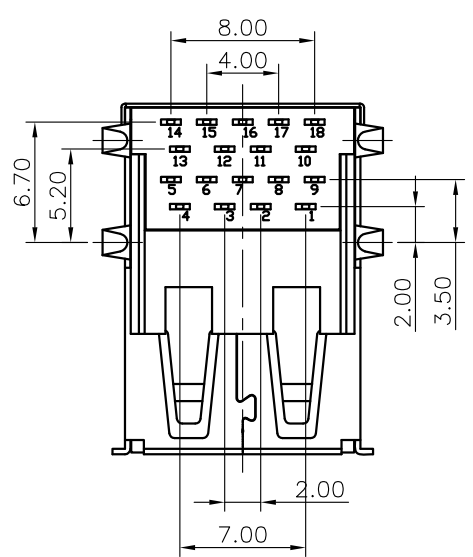
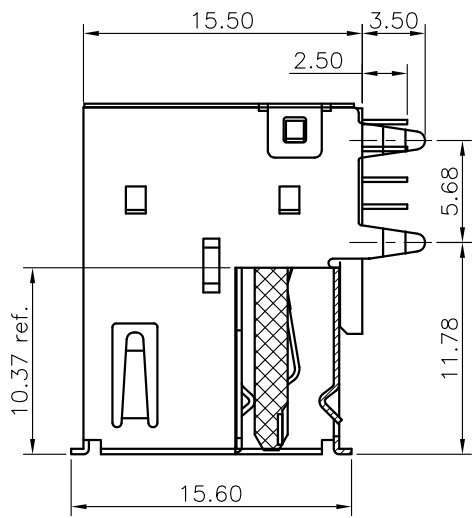
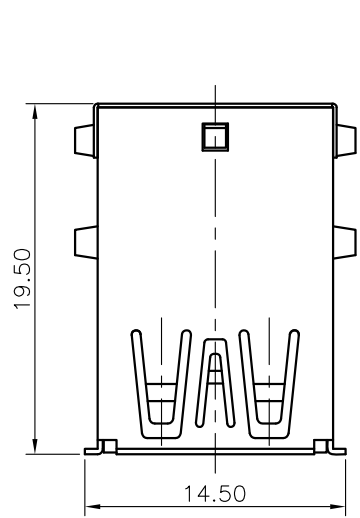
DS1109 - X X X

- Contact plating
 - 0: selective gold flash
 - C 3u" gold
 - 3: 30u" gold
- Shell plating
 - 6: tin
 - N: nickel
 - 8: full gold
- Color of housing
 - W: white
 - B: black
 - L: Blue



| | | | | | | | | | | | | | |
|-------------------|-------|-----------------|-------|--|----|--------|--------|---------------------------------|--|--------|--|--|--|
| GENERAL TOLERANCE | | ANGLE TOLERANCE | | PROJECTION | | TITLE | | USB 3.0 B TYPE MALE SOLDER TYPE | | | | | |
| X. | ±0.60 | X. | ±5° | UNITS | mm | | | | | | | | |
| .X | ±0.38 | .X | ±3° | SHEET SIZE | A4 | SERIES | DS1109 | | | | | | |
| .XX | ±0.25 | .XX | ±2° | 晨翔电子有限公司 CONNFly CONNFly ELECTRONIC CO. LTD | | | | | | | | | |
| DRAWING TYPE | | CUSTOMER | | | | | | | | | | | |
| SCALE | | 1:1 | SHEET | | | | | | | 1 OF 1 | | | |
| DRAWING NO. | | C-DS1109-XXX | | | | | | | | | | | |

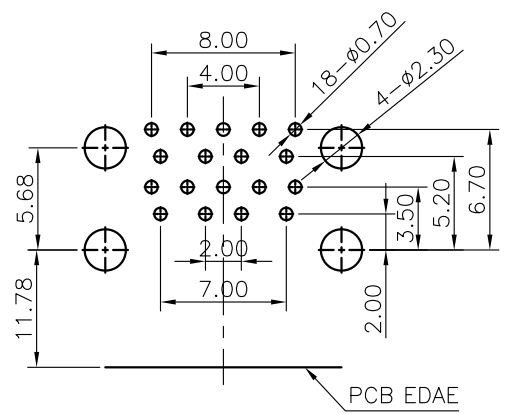
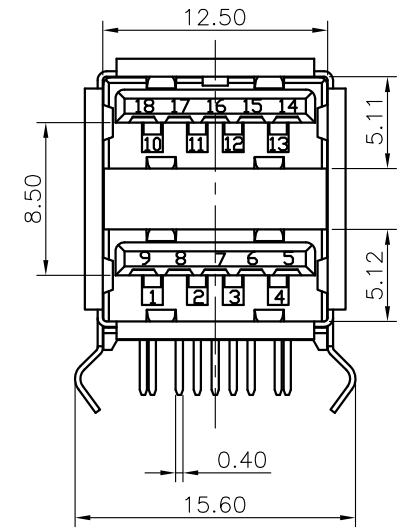
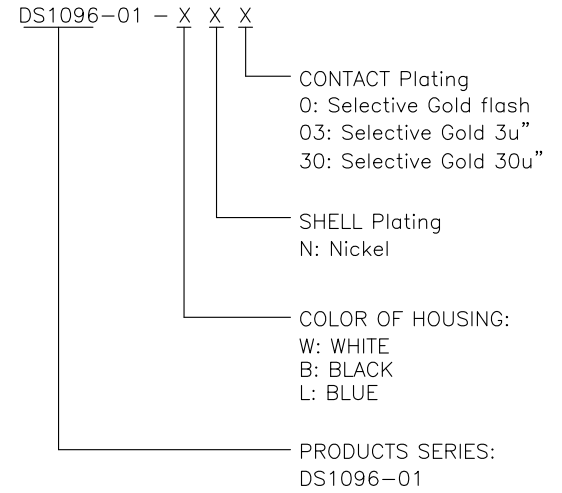
| REV. | DESCRIPTION | DRAWN | CHECKED | APPROVED |
|------|-------------|---------------|---------|----------|
| A | NEW RELEASE | YCH 03/16/12' | ~ | |
| | | | | |
| | | | | |



NOTES:

- SPECIFICATIONS:
 - CONTACT RESISTANCE: 30mΩ max.
 - INSULATOR RESISTANCE: 1000MΩ min. AT DC 500V.
 - CURRENT RATING: 1.5A.
 - VOLTAGE RATING: 30VDC.
 - DIELECTRIC STRENGTH: AC 500V FOR 1 Minute.

2. PRODUCT NUMBER CODE:



RECOMMEND PCB LAYOUT
TOLERANCE=±0.05

| | | | | | | | | |
|-------------------|-------|------------------|-----|--|----|--------|---|--|
| GENERAL TOLERANCE | | ANGLE TOLERANCE | | PROJECTION | | TITLE | USB 3.0 STACK 18 PIN FEMALE RIGHT ANGLE TYPE | |
| X. | ±0.60 | X. | ±5° | UNITS | mm | | | |
| .X | ±0.38 | .X | ±3° | SHEET SIZE | A4 | SERIES | DS1096-01 SERIES | |
| .XX | ±0.25 | .XX | ±2° | 晨翔电子有限公司 CONNFLY CONNFLY ELECTRONIC CO. LTD | | | | |
| DRAWING TYPE | | CUSTOMER | | | | | | |
| SCALE | | 1:1 SHEET 1 OF 1 | | | | | | |
| DRAWING NO. | | C-DS1096-01-XXX | | | | | | |

FINISHED