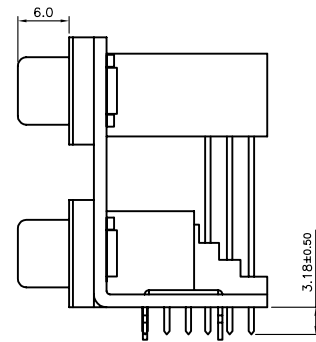
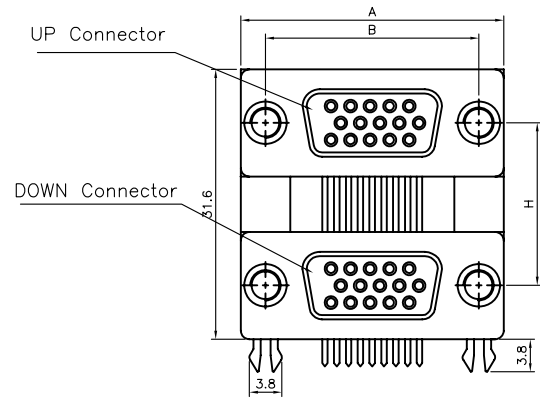


REV.	DESCRIPTION	DRAWN	CHECKED	APPROVED
A	NEW RELEASE	YCH 07/06/09	~	

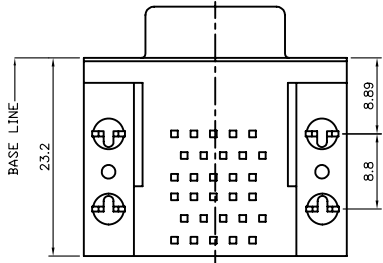


NOTES:

- SPECIFICATION:
 - Current Rating: 3A.
 - Insulation Resistance: 1000MΩ min.
 - Dielectric Withstanding: 500V for One minute.
 - Contact resistance: 100mΩ max.
 - Operating Temperature: -40°C to +105°C
- MATERIALS
 - Housing: Thermoplastic(UL94 V-0)
 - Contact: Copper alloy.
 - Shell: Steel.
 - Board Lock: Copper alloy
- Product Number code:

DS1082-01 - X X X X X X

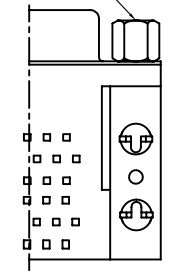
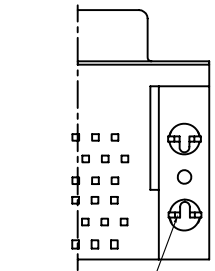
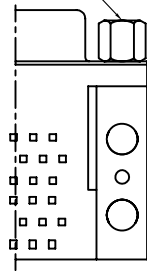
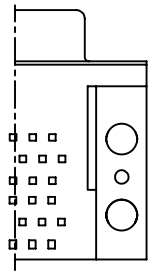
- Screw type
 - 1: CC type 2: CS type
 - 3: BB type 4: BS type
- Central distance(DIM. H)
 - 1: 19.05mm
 - 2: 15.88mm
- Housing color
 - B: All black
- Contact plating
 - 0: Selective gold flash
 - 8: Full gold flash
- UP connector type
 - 15M: H.D-SUB standard 15pin male
 - 15F: H.D-SUB standard 15pin female
 - 26M: H.D-SUB standard 26pin male
 - 26F: H.D-SUB standard 26pin female
 - 44M: H.D-SUB standard 44pin male
 - 44F: H.D-SUB standard 44pin female
 - 62M: H.D-SUB standard 62pin male
 - 62F: H.D-SUB standard 62pin female
- DOWN connector type
 - 15M: H.D-SUB standard 15pin male
 - 15F: H.D-SUB standard 15pin female
 - 26M: H.D-SUB standard 26pin male
 - 26F: H.D-SUB standard 26pin female
 - 44M: H.D-SUB standard 44pin male
 - 44F: H.D-SUB standard 44pin female
 - 62M: H.D-SUB standard 62pin male
 - 62F: H.D-SUB standard 62pin female



Positions	DIM A	DIM B
15	30.80	24.99
26	39.14	33.32
44	53.04	47.04

#4-40 UNC screw

#4-40 UNC screw

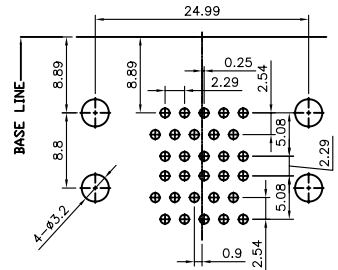


CC TYPE

CS TYPE

BB TYPE

BS TYPE




RECOMMEND PCB LAYOUT
(TOLERANCE=±0.05)

GENERAL TOLERANCE		ANGLE TOLERANCE	
X.	±0.60	X.	±5°
.X	±0.38	.X	±3°
.XX	±0.25	.XX	±2°

PROJECTION	TITLE	D-SUB DUAL PORT TYPE	
UNITS	mm	SHEET	DS1082-04 SERIES
SHEET SIZE	A4	SERIES	DS1082-04 SERIES

DRAWING TYPE	CUSTOMER		
SCALE	1:1	SHEET	1 OF 1
DRAWING NO.	C-DS1082-04-XXXXXX		


晨翔电子有限公司
CONNFLY CONNFLY ELECTRONIC CO. LTD

REV.	DESCRIPTION	DRAWN	CHECKED	APPROVED
A	NEW RELEASE	HP 18/06/05		

NOTES:

1. SPECIFICATION:

- . Current Rating: 3A.
- . Insulation Resistance: 1000MΩ min.
- . Dielectric Withstanding: 500V for One minute.
- . Contact resistance: 100mΩ max.
- . Operating Temperature: -40°C to +105°C

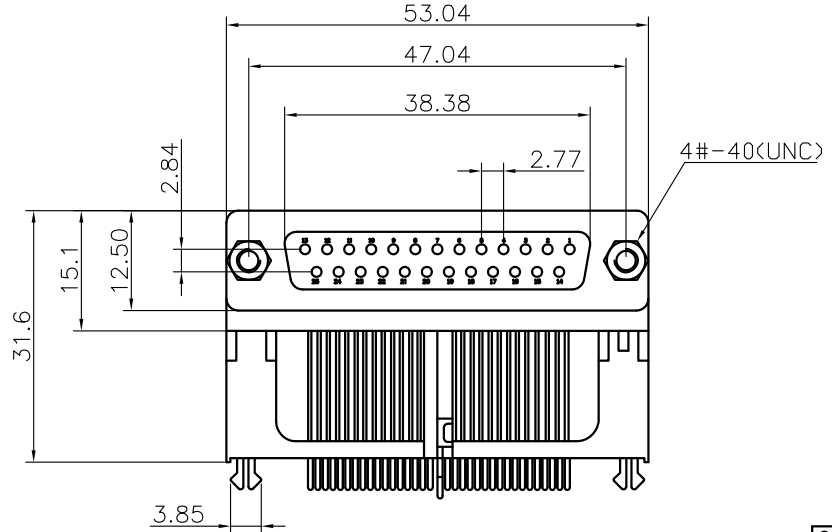
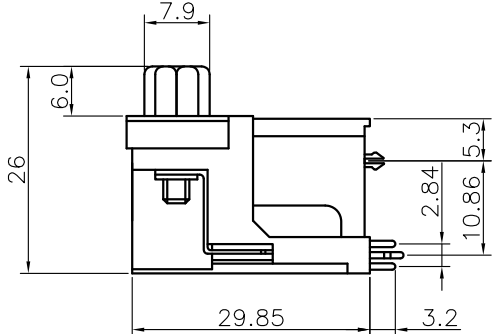
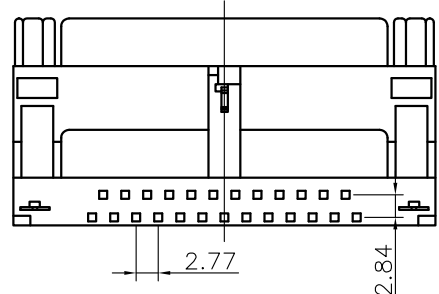
2. MATERIALS

- . Insulator: PBT With 30% Glass Fiber(UL 94V-0)
- . Contact: Copper alloy.
- . Shell: Stel.
- . Board Lock: Copper alloy

3. PRODUCT NUMBER CODE:

DS1080 - X X X


- Contact Plating
- 6: Tin
- 0: Selective Gold flash
- Shell plating
- N: nickel
- Color of housing
- P: Purple
- B: BLACK
- L: BLUE



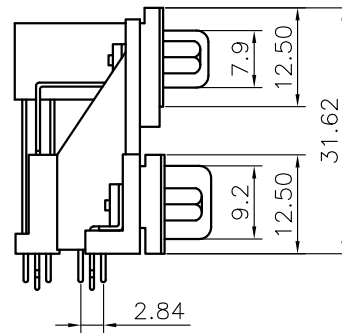
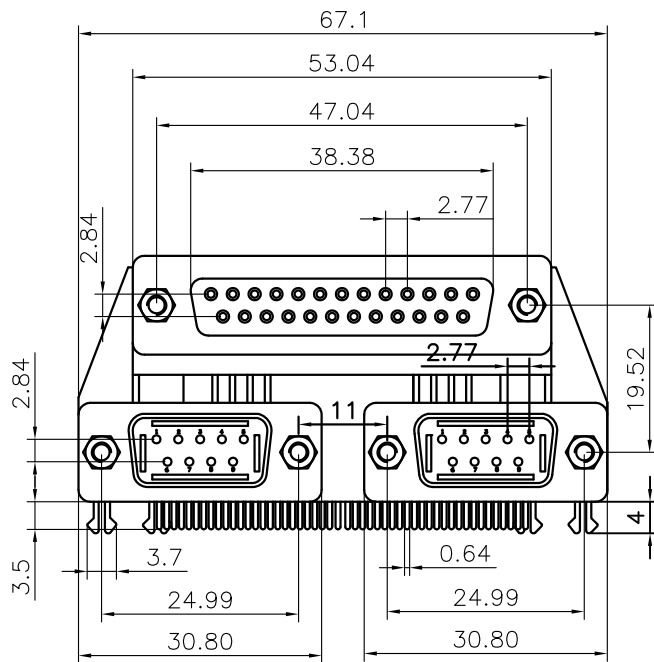
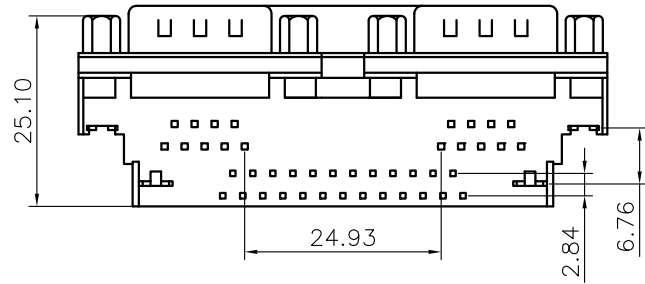
GENERAL TOLERANCE	ANGLE TOLERANCE
X. ±0.60	X. ±5°
.X ±0.38	.X ±3°
.XX ±0.25	.XX ±2°

PROJECTION	TITLE
UNITS	D-SUB 25 FEMALE HIGH RAISE(25F)
SHEET SIZE	SERIES DS1080

DRAWING TYPE	CUSTOMER
SCALE	1:1 SHEET 1 OF 1
DRAWING NO.	C-DS1080-XXX


晨翔电子有限公司
CONNFLY CONNFLY ELECTRONIC CO. LTD

REV.	DESCRIPTION	DRAWN	CHECKED	APPROVED
A	NEW RELEASE	HP 18/06/05		



NOTES:

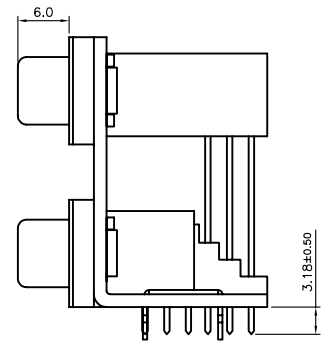
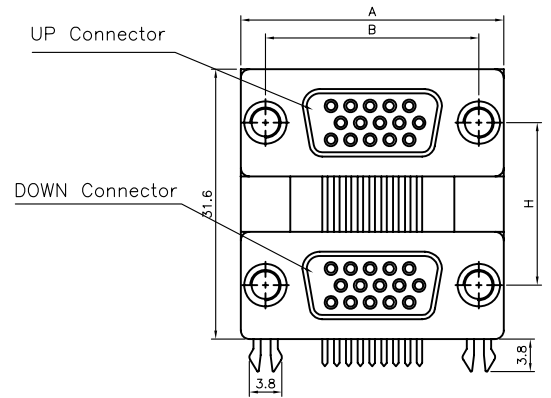
- SPECIFICATION:
 - Current Rating: 3A.
 - Insulation Resistance: 1000MΩ min.
 - Dielectric Withstanding: 500V for One minute.
 - Contact resistance: 100mΩ max.
 - Operating Temperature: -40°C to +105°C
- MATERIALS
 - Insulator: PBT With 30% Glass Fiber(UL 94V-0)
 - Contact: Copper alloy.
 - Shell: Stel.
 - Board Lock: Copper alloy
- PRODUCT NUMBER CODE:

DS1081 - X X X X

- Contact Plating
- 6: Tin
- 0: Selective Gold flash
- Shell plating
- N: nickel
- Color of 25pin Housing
- P: Purple
- B: BLACK
- L: BLUE
- Color of 9pin Housing
- B: BLACK
- L: BLUE

GENERAL TOLERANCE		ANGLE TOLERANCE		PROJECTION		TITLE	D-SUB CONNECTORS THREE		
X.	±0.60	X.	±5°	UNITS	mm		IN ONE(25F/2*9M)		
.X	±0.38	.X	±3°	SHEET SIZE	A4	SERIES	DS1081		
.XX	±0.25	.XX	±2°						
DRAWING TYPE		CUSTOMER			晨翔电子有限公司 CONNFLY CONNFLY ELECTRONIC CO. LTD				
SCALE		1:1	SHEET 1 OF 1						
DRAWING NO.		C-DS1081-W1T							

REV.	DESCRIPTION	DRAWN	CHECKED	APPROVED
A	NEW RELEASE	YCH 07/06/09	~	



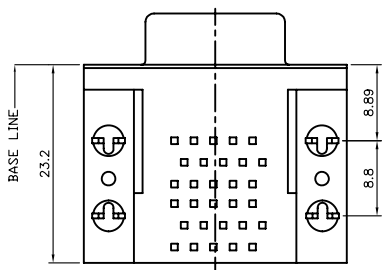
NOTES:

- SPECIFICATION:
 - Current Rating: 3A.
 - Insulation Resistance: 1000MΩ min.
 - Dielectric Withstanding: 500V for One minute.
 - Contact resistance: 100mΩ max.
 - Operating Temperature: -40°C to +105°C
- MATERIALS
 - Housing: Thermoplastic(UL94 V-0)
 - Contact: Copper alloy.
 - Shell: Steel.
 - Board Lock: Copper alloy
- Product Number code:

DS1082-04 - X X X X X X

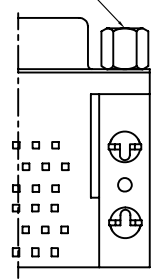
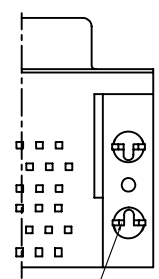
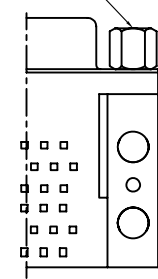
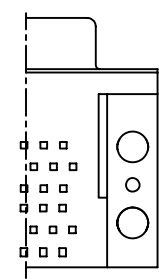
- Screw type
 - 1: CC type 2: CS type
 - 3: BB type 4: BS type
- Central distance(DIM. H)
 - 1: 19.05mm
 - 2: 15.88mm
- Housing color
 - B: All black
- Contact plating
 - 0: Selective gold flash
 - 8: Full gold flash
- UP connector type
 - 15M: H.D-SUB standard 15pin male
 - 15F: H.D-SUB standard 15pin female
 - 26M: H.D-SUB standard 26pin male
 - 26F: H.D-SUB standard 26pin female
 - 44M: H.D-SUB standard 44pin male
 - 44F: H.D-SUB standard 44pin female
 - 62M: H.D-SUB standard 62pin male
 - 62F: H.D-SUB standard 62pin female
- DOWN connector type
 - 15M: H.D-SUB standard 15pin male
 - 15F: H.D-SUB standard 15pin female
 - 26M: H.D-SUB standard 26pin male
 - 26F: H.D-SUB standard 26pin female
 - 44M: H.D-SUB standard 44pin male
 - 44F: H.D-SUB standard 44pin female
 - 62M: H.D-SUB standard 62pin male
 - 62F: H.D-SUB standard 62pin female

Positions	DIM A	DIM B
15	30.80	24.99
26	39.14	33.32
44	53.04	47.04



#4-40 UNC screw

#4-40 UNC screw



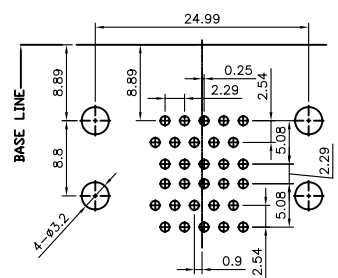
Board Lock

CC TYPE

CS TYPE

BB TYPE

BS TYPE



RECOMMEND PCB LAYOUT
(TOLERANCE=±0.05)

GENERAL TOLERANCE		ANGLE TOLERANCE	
X.	±0.60	X.	±5°
.X	±0.38	.X	±3°
.XX	±0.25	.XX	±2°

PROJECTION	TITLE	HIGH DENSITY D-SUB 2 IN 1	
UNITS	mm		
SHEET SIZE	A4	SERIES	DS1082-04 SERIES

DRAWING TYPE	CUSTOMER		
SCALE	1:1	SHEET	1 OF 1
DRAWING NO.	C-DS1082-04-XXXXXX		


晨翔电子有限公司
CONNFLY CONNFLY ELECTRONIC CO. LTD

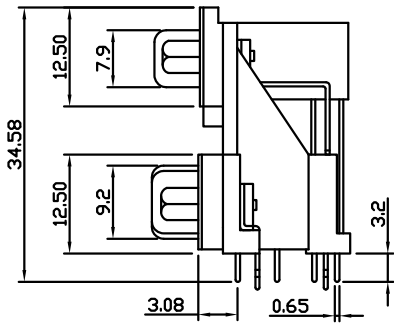
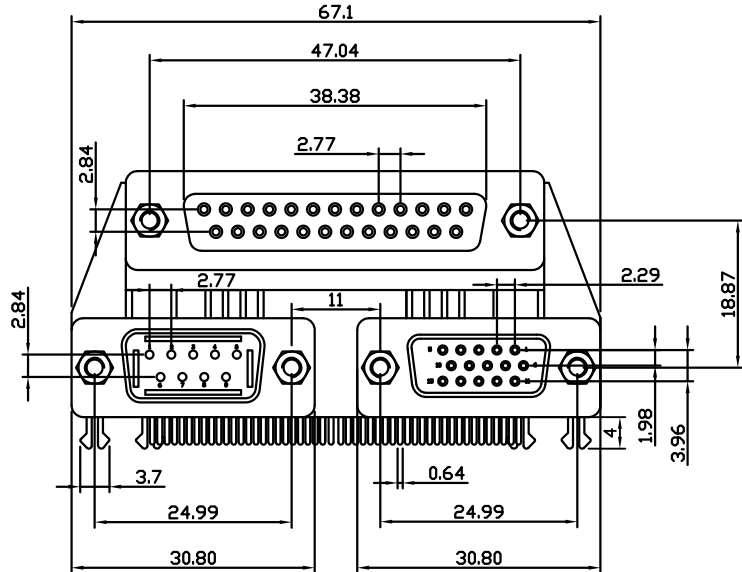
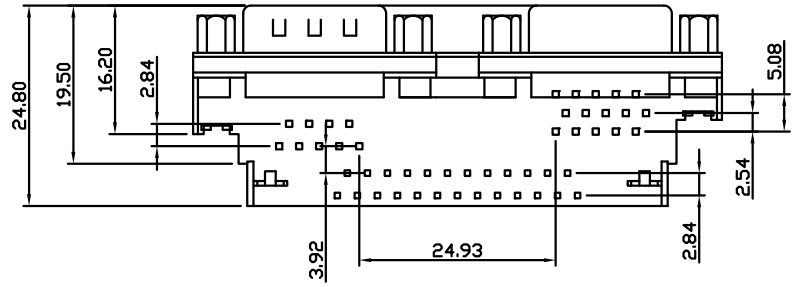
REV.	DESCRIPTION	DRAWN	CHECKED	APPROVED
A	NEW RELEASE	LL 11/15/06		

NOTES:

- SPECIFICATION:
 - Current Rating: 3A.
 - Insulation Resistance: 1000MΩ min.
 - Dielectric Withstanding: 500V for One minute.
 - Contact resistance: 100mΩ max.
 - Operating Temperature: -40°C to +105°C
- MATERIALS
 - Insulator: PBT With 30% Glass Fiber(UL 94V-0)
 - Contact: Copper alloy.
 - Shell: Stell.
 - Board Lock: Copper alloy
- PRODUCT NUMBER CODE:

DS1082 - X X X X X

 - Contact Plating
 - 6: Tin
 - 0: Selective Gold flash
 - Shell plating
 - N: nickel
 - Color of 25pin housing
 - P: Purple
 - B: BLACK
 - L: BLUE
 - Color of 15pin housing
 - B: BLACK
 - L: BLUE
 - Color of 9pin housing
 - B: BLACK
 - L: BLUE



GENERAL TOLERANCE		ANGLE TOLERANCE		PROJECTION		TITLE	D-SUB CONNECTORS 3 in 1 (25F/9M/15F)	
X.	±0.60	X.	±5°	UNITS	mm			
.X	±0.38	.X	±3°	SHEET SIZE	A4	SERIES	DS1082	
.XX	±0.25	.XX	±2°	晨翔电子有限公司 CONNFLY CONNFLY ELECTRONIC CO. LTD				
DRAWING TYPE		CUSTOMER						
SCALE	1:1	SHEET	1 OF 1					
DRAWING NO.		C-DS1082-XXXXX						