

REV.	DESCRIPTION	DRAWN	CHECKED	APPROVED
A	NEW RELEASE	YCH 10/06/10'	~	

Male terminal

NOTES:

- ELECTRICAL CHARACTERISTICS:
 - CONTACT RESISTANCE: 20mΩ Max.INITIAL.
 - DIELECTRIC WITHSTANDING VOLTAGE:500V AC(rms) FOR 1 MINUTE.
 - INSULATION RESISTANCE:1000MΩ Min.
- MECHANICAL CHARACTERISTICS:
 - DURABILITY: 300 CYCLES.
- ENVIRONMENT CHARACTERISTICS:
 - OPERATING TEMPERATURE:-40°C~+105°C.
- PRODUCT NUMBER CODE:

DS1035-02 - XX X X X X X X

SCREW DIM. A
S: Standard(W/O nut)
1: 3.00 2: 4.00
3: 4.50 4: 5.00
5: 5.50 6: 5.80

SCREW TYPE
S: Standard(W/O nut)
1: CC TYPE
2: CS TYPE

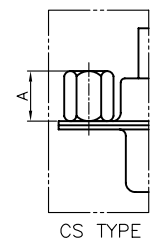
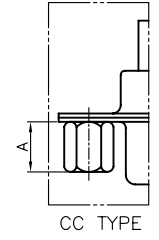
SHELL PLATING
T:FORNT&BACK SHELL TIN
N:FORNT SHELL NICKEL,
BACK SHELL TIN

CONTACT PLATING
0:SELECTIVE GOLD FLASH
8:FULL GOLD FLASH

HOUSING COLOR
U:BLUE B:BLACK

CONNECTOR TYPE
M:MALE F:FEMALE

No.OF CONTACTS
15:15pos 26:26pos
44:44pos 62:62pos




Position	A±0.2		B±0.2		C±0.2	
	Male	Female	Male	Female	Male	Female
15P	30.80	24.99	17.90	16.33		
26P	39.14	33.32	26.50	24.66		
44P	53.04	47.04	40.00	38.38		
62P	69.32	63.50	56.50	54.84		

Female terminal

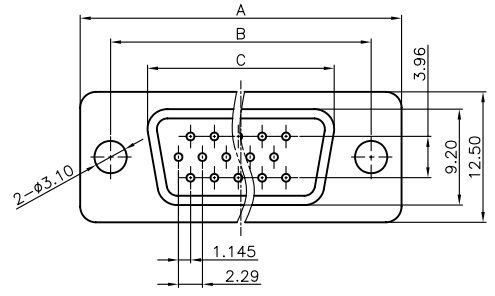
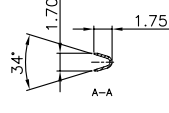
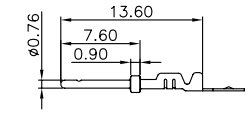
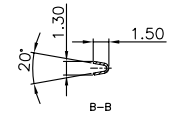
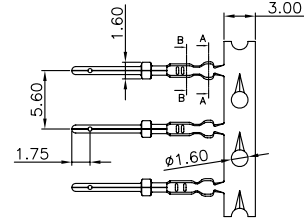
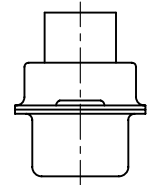
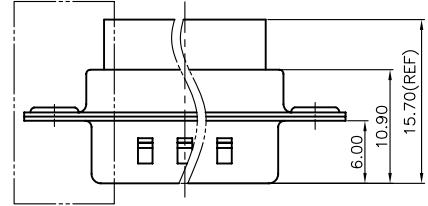
GENERAL TOLERANCE		ANGLE TOLERANCE	
X.	±0.60	X.	±3°
.X	±0.38	.X	±2°
.XX	±0.25	.XX	±1°

DRAWING TYPE	CUSTOMER		
SCALE	1:1	SHEET	1 OF 1
DRAWING NO.	C-DS1035-02-XXXXXXX		

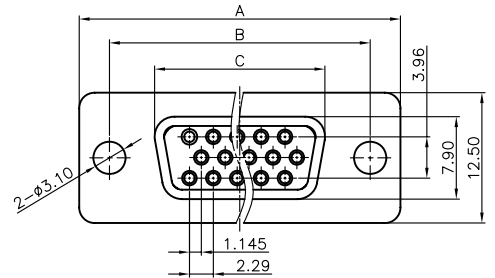
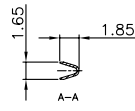
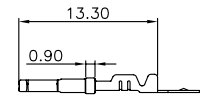
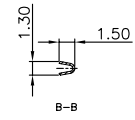
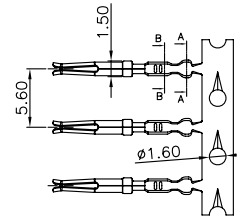
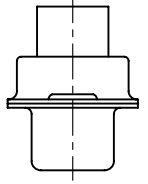
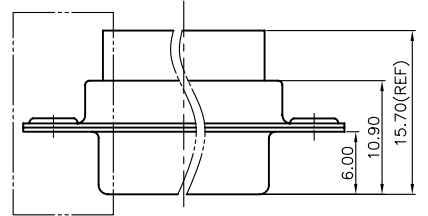
PROJECTION	TITLE	H.D-SUB CRIMP TYPE	
UNITS	mm		
SHEET SIZE	A4	SERIES	DS1035-02 SERIES

 **晨翔电子有限公司**
CONNFLY CONNFLY ELECTRONIC CO. LTD

Male

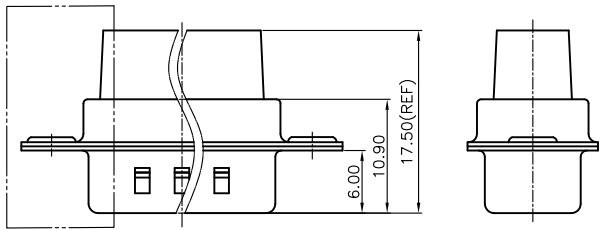


Female

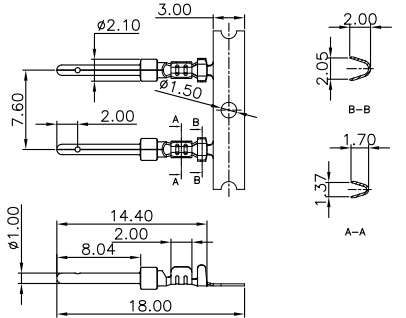


REV.	DESCRIPTION	DRAWN	CHECKED	APPROVED
A	NEW RELEASE	YCH 07/07/07	~	LJC 07/07/07
B	整理图面	YCH 05/21/08	~	

Male

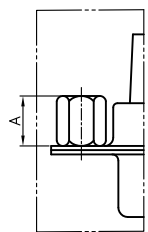
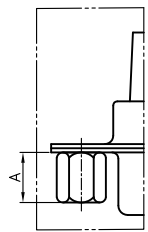


Male terminal



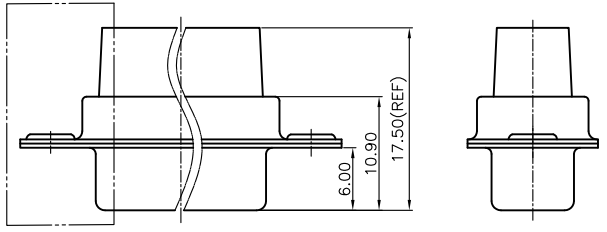
- NOTES:
- ELECTRICAL CHARACTERISTICS:
 - CONTACT RESISTANCE: 20mΩ Max.INITIAL.
 - DIELECTRIC WITHSTANDING VOLTAGE:500V AC(rms) FOR 1 MINUTE.
 - INSULATION RESISTANCE:1000MΩ Min.
 - MECHANICAL CHARACTERISTICS:
 - DURABILITY: 300 CYCLES.
 - ENVIRONMENT CHARACTERISTICS:
 - OPERATING TEMPERATURE:-40°C~+105°C.
 - APPLICATION WIRE AWG:#20-24.
 - PRODUCT NUMBER CODE:

- DS1036-01 - XX X X X X X X
- SCREW DIM. A
 - S: Standard(W/O nut)
 - 1: 3.00 2: 4.00
 - 3: 4.50 4: 5.00
 - 5: 5.50 6: 5.80
 - SCREW TYPE
 - S: Standard(W/O nut)
 - 1: CC TYPE
 - 2: CS TYPE
 - SHELL PLATING
 - T:FORNT&BACK SHELL TIN
 - N:FORNT SHELL NICKEL, BACK SHELL TIN
 - CONTACT PLATING
 - 0:SELECTIVE GOLD FLASH
 - 8:FULL GOLD FIASH
 - HOUSING COLOR
 - U:BLUE B:BLACK
 - CONNECTOR TYPE
 - M:MALE F:FEMALE
 - No.OF CONTACTS
 - 09:9pos 15:15pos
 - 25:25pos 37:37pos

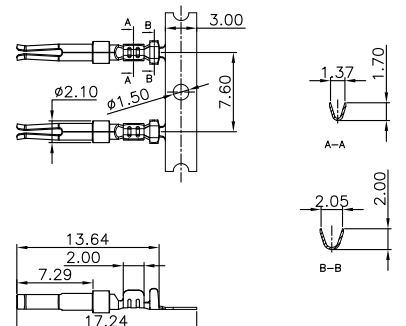


Position	C±0.2	
	A±0.2	B±0.2
9P	30.80	24.99
15P	39.14	33.32
25P	53.04	47.04
37P	69.32	63.50

Female



Female terminal



GENERAL TOLERANCE	ANGLE TOLERANCE
X. ±0.60	X. ±3°
.X ±0.38	.X ±2°
.XX ±0.25	.XX ±1°

PROJECTION	TITLE
UNITS mm	D-SUB CRIMP TYPE
SHEET SIZE A4	SERIES DS1036-01 SERIES

DRAWING TYPE	CUSTOMER
SCALE 1:1	SHEET 1 OF 1
DRAWING NO. C-DS1036-01-XXXXXXX	

晨翔电子有限公司
CONNFLY CONNFLY ELECTRONIC CO. LTD