

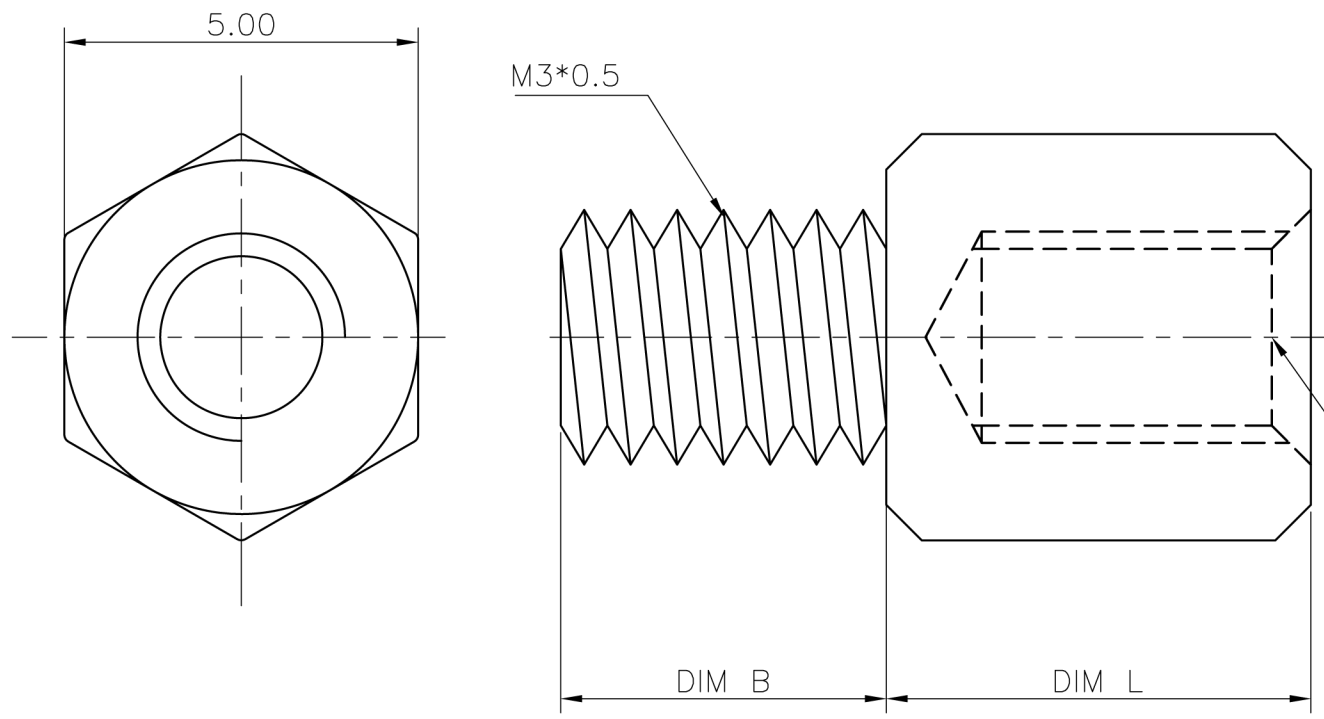
REV.	DESCRIPTION	DRAWN	CHECKED	APPROVED
A	NEW RELEASE	LL 12/18/06'	~	LL 12/18/06'
B	增加规格	YCH 11/10/09'	~	

备注/Notes:
 1.材料/Material:铜材/Copper alloy.
 2.电镀/Plating: 80~150u"镍/80~150u" Nickel.
 3.料号如下/Part Number Code:
 H - LXXXX - XXXX - X

螺牙类型/Screw type:
 3: M3*0.5

六角长度/(DIM L Length):
 0500:5.00mm
 0600:6.00mm
 0700:7.00mm
 0800:8.00mm
 1000:10.00mm
 1200:12.00mm
 1500:15.00mm
 2000:20.00mm
 2500:25.00mm
 3000:30.00mm
 4000:40.00mm
 5000:50.00mm

螺牙长度(DIM B Screw length):
 0700:7.00
 0500:5.00



GENERAL TOLERANCE		ANGLE TOLERANCE		PROJECTION	⊕	TITLE	SCREW	
X.	±0.20	X.	±2°	UNITS	mm			
.X	±0.15	.X	±1°	SHEET SIZE	A4	SERIES	SCREW	SERIES
.XX	±0.10	.XX	±0.5°					
DRAWING TYPE		COMPONENTS						
SCALE	1:1	SHEET	1 OF 1					
DRAWING NO.	H-LXXXX-XXXX-3-B							