

## Beads Cores



### ● Ordering Code

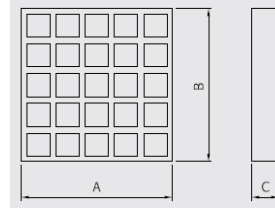
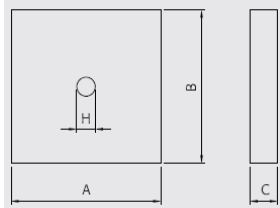
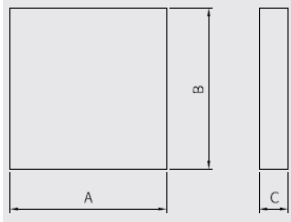
FBS 13 - 35 08 60 - T5 - R  
 (1) (2) (3) (4) (5) (6) (7)

(1) Type Code (4) C Size  
 (2) Design Code (5) D Size  
 (3) A Size

### ● Item & Characteristics

NO	TYPE	Material	Core Size	Lead Configuration	Impedance ( $\Omega$ ) min		(Z,Rs,XL)-f Curve Fig
					25MHz	100MHz	
1	FBS	13	250845	T5,T2,VT,RT,UT, VB,RB,UB,ST FD,FE,FF	32	50	1
2		13	350830		25	45	2
3		13	350847		35	60	3
4		13	350860		45	72	4
5		13	350875		60	120	5
6		13	350880		75	123	6
7		13	350883		62	125	7
8		13	350890		50	93	8
9	FBD	13	350847	WT,WB	70	110	9
10		13	350860		90	150	10
11		13	350875		135	218	11
12		13	350883		124	240	12
13		4	350883		108	235	13
14		13	350890		150	250	14
15	FBR	13	235575	ST,SB	80	150	15

## Beads Cores



PART NO	Dimension (mm)			
	A	B	C	H
100x100x3.0	99.95±0.10	99.95±0.10	3.00±0.10	
100x100x4.0	101.25±0.70	99.95±0.10	4.00±0.25	
100x100x4-10H	99.95±0.10	99.95±0.10	4.00±0.10	10±0.20
100X100X6.0	100.00±0.15	100.00±0.15	6.00±0.10	
100X100X6.0-10HA	99.95±0.10	99.95±0.10	6.05±0.10	10±0.20
100X100X6.3	100.00±0.15	100.00±0.15	6.3±0.10	
100X100X6.3-10H	99.95±0.10	99.95±0.10	6.3±0.10	
100X100X6.7	99.95±0.10	99.95±0.10	6.75±0.10	
100X100X6.7-10HU	99.95±0.10	99.95±0.10	6.75±0.10	10±0.20
100X100X7.0	100.00±0.70	100.00±0.70	7.00±0.25	