

> Connection

PRESE E SPINE

IEC connectors

Fiches et prises



SPINE DA INCASSO

Panel mounting plugs | Prises mâles à enclenchement

**PRESE DA INCASSO**

Panel mounting sockets | Prises femelles à enclenchement

**SPINE DA CIRCUITO STAMPATO**

PCB plugs | Prises mâles pour circuit imprimé

**PRESE DA CIRCUITO STAMPATO**

PCB sockets | Prises femelles pour circuit imprimé

**SPINE E PRESE DA INCASSO**

Panel mounting sockets & plugs | Prises mâles et femelles à enclenchement

**PRESE AMERICANE DA PANNELLO**

Panel mounting American sockets | Prises femelles américaines pour panneau

**PRESE VOLANTI**

In-line power connectors | Fiches femelles volantes

**ACCESSORI**

Accessories | Accessoires

**SPINE VOLANTI**

In-line plug | Fiches mâles volantes

**IEC LOCK**

IEC Lock | IEC Lock

**PRODUTTORI | Manufacturers | Producteurs****Scolmore**
United Kingdom

Connection

PRESE E SPINE

IEC connectors

Fiches et prises

INFORMAZIONI GENERALI

General Information

Informations Générales

■ PRESE E SPINE

La gamma di prese EN60320 della Bulgin Components è specifica per l'uso in tutti i tipi di apparecchi elettrici e soddisfa un elenco considerevole di omologazioni internazionali. La gamma standard offre la scelta di prodotti più vasta del mercato.

Le varianti offerte includono: modelli snap-in e modelli con montaggio a vite, montaggio da circuito stampato, spine con portafusibile unipolare e bipolare, con o senza filtri, modelli per alta temperatura, prese con filtri anti-disturbo integrati.

A completare la gamma sono disponibili prese IEC320.2.2 con varie modalità di montaggio e tipi di contatti.

Connettori cablabili e cavi di alimentazione pressofusi completano ulteriormente la gamma.

■ SOCKETS AND PLUGS

EN60320 inlets range from Bulgin Components is specified for use in all types of electrical equipments, and has an impressive list of international approvals. The standard range offers one of the most comprehensive range of the market.

Variants offered include: flange and snap-in type, PCB mounting, fused inlets, with or without filters, hot condition types and inlets with integral suppression and capacitors. To complement the range, appliance outlets to IEC320.2.2 are available with various mounting options and termination styles. Mating connectors in rewirable and cordset from complete the range.

■ FICHES ET PRISES

La gamme de prises EN60320 de Bulgin Components est spécialement conçue pour être utilisée dans tout types d'appareils électriques et satisfait une liste considérable d'homologations internationales. La gamme standard offre un large choix de produits du marché. Les variantes offertes comprennent: des modèles à encliqueter des modèles avec montage à vis, montage à circuit imprimé, des prises avec porte-fusible unipolaire et bipolaire, avec ou sans filtre, des modèles pour les températures élevées, des prises avec des filtres antiparasites intégrés. Il existe aussi des prises IEC320.2.2 avec différents modes de montage, et avec différents types de contacts. En plus des connectiques de câblage, des câbles d'alimentation complètent la gamme.

APPLICAZIONI

Applications | Applications

- **Elettromedicali**
Medical equipments | Equipements médicaux
- **Computer**
Computers | Ordinateurs
- **Registratori di cassa**
Cash registers | Caisses enregistreuses
- **Piccoli elettrodomestici**
Small households | Petits appareils électroménagers
- **Strumentazione**
Equipments | Equipements

VANTAGGI

Advantages | Avantages

- **Pronta consegna**
Prompt delivery | Livraison sur stock
- **Ampia gamma**
Wide range | Large gamme
- **Omologazioni**
Approvals | Homologations
- **Grande diffusione**
Wide availability | Grande diffusion

STRUTTURA DEL CODICE

Code structure | Structure du code

Prese e spine
Sockets and plugs
Fiches et prises

PX

Serie
Range
Série

575

575: PX 575
611: PX 611
633: PX 633
etc.

Spessore pannello
Panel thickness
Épaisseur de panneau

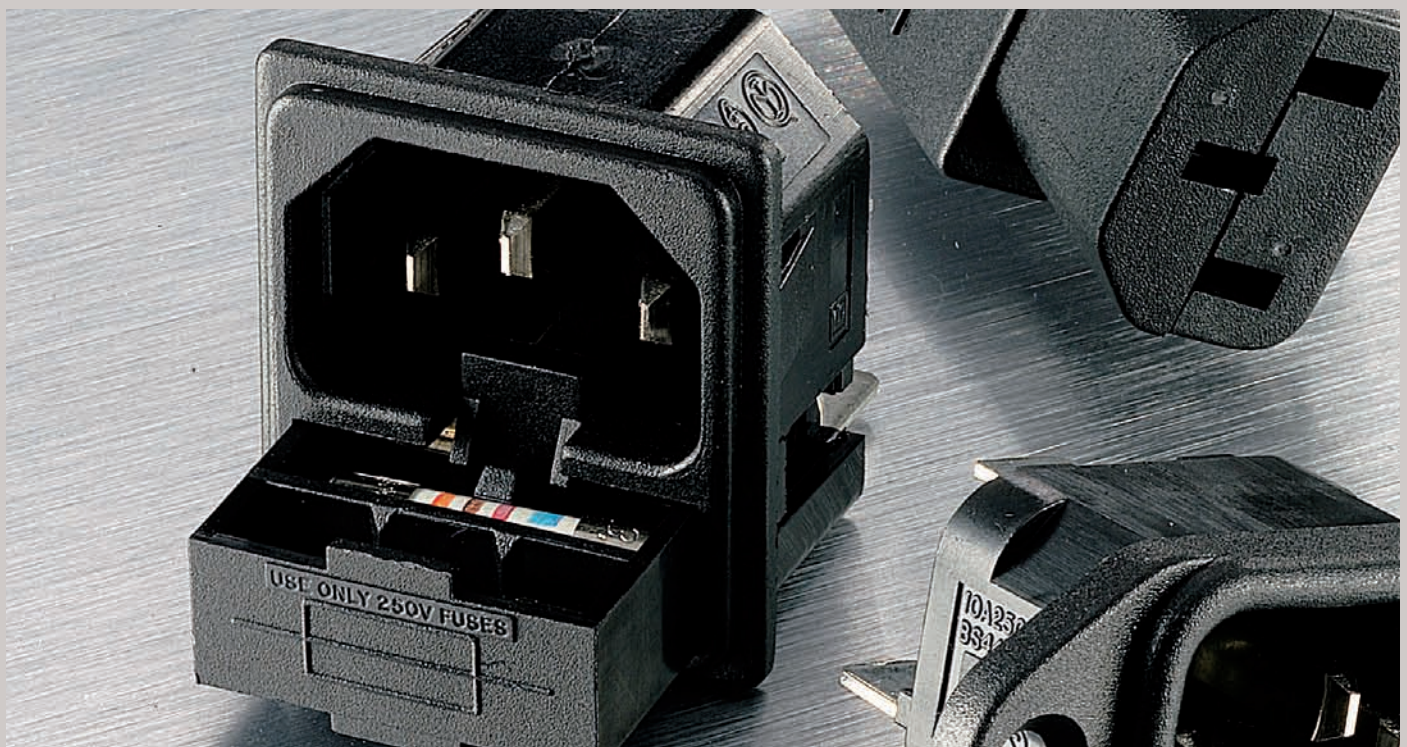
10

10: 1 mm
15: 1,5 mm
20: 2 mm
30: 3 mm
00: SENZA

Tipo di contatti
Type of contacts
Type de contacts

28

28: A SILDARE
63: A FASTON
48: A FASTON
00: NESSUNA
SPECIFICA



PRESE E SPINE

IEC connectors | *Fiches et prises*



PX 575

PX 579

PX 580

SPINE DA PANNELLO IEC power inlets | *Prises mâles pour panneau*

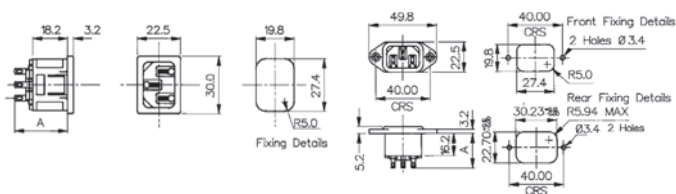
Tensione 250 V	Voltage 250 V	Tension 250 V
Corrente 10 A Europa / 15 A USA	Current 10 A Europe / 15 A USA	Courant 10 A Europe / 15 A USA
Contatti Ottone stagnato	Contacts Tinned brass	Contacts Laiton étamé
Corpo Nylon UL94-V0	Body Nylon UL94-V0	Corps Nylon UL94-V0
Norme riferimento EN60320-1	Standards EN60320-1	Normes EN60320-1
Cod. omologazione Bulgin PX0575 - PX0580 - PX0579	Approval code Bulgin PX0575 - PX0580 - PX0579	Code d'homologation Bulgin PX0575 - PX0580 - PX0579



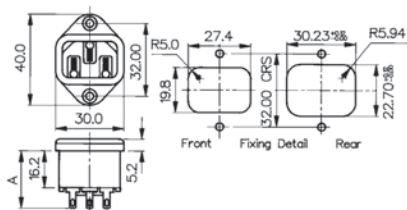
Code Code	Spessore pannello Panel thickness Épaisseur du panneau	Contatti Contacts Contacts	DIM "A"
Fissaggio Snap-In Snap-In fixing Fixation à enclenchement			
PX5751028	1	2,8	28
PX5751528	1,5	2,8	28
PX5752028	2	2,8	28
PX5753028	3	2,8	28
PX5751063	1	6,3	29,2
PX5751563	1,5	6,3	29,2
PX5752063	2	6,3	29,2
PX5753063	3	6,3	29,2
Fissaggio a vite orizzontale Horizontal screw fixing Fixation horizontale à vis			
PX5800028	-	2,8	25,7
PX5800063	-	6,3	27,2
Fissaggio a vite verticale Vertical screw fixing Fixation verticale à vis			
•PX5790028	-	2,8	25,7
•PX5790063	-	6,3	27,2

Dimensioni | Dimensions | Dimensions

PX 575 - PX580



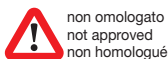
PX 579



100 pz
100 pcs
100 pces



pronta
in stock
en stock



non omologato
not approved
non homologué



PX 675

PX 695

PX 695/LK

PRESE DA PANNELLO IEC power outlets | *Prises femelles pour panneau*

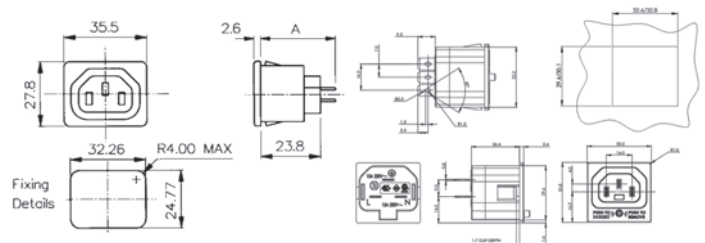
Tensione 250 V	Voltage 250 V	Tension 250 V
Corrente 10 A Europa / 15 A USA	Current 10 A Europe / 15 A USA	Courant 10 A Europe / 15 A USA
Contatti Ottone stagnato	Contacts Tinned brass	Contacts Laiton étamé
Corpo Nylon UL94-V0	Body Nylon UL94-V0	Corps Nylon UL94-V0
Norme riferimento EN60320-2-2	Standards EN60320-2-2	Normes EN60320-2-2
Cod. omologazione Bulgin PX0675 - PX0695 Scolmore PA050	Approval code Bulgin PX0675 - PX0695 Scolmore PA050	Code d'homologation Bulgin PX0675 - PX0695 Scolmore PA050



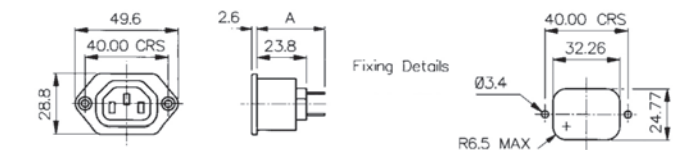
Code Code	Spessore pannello Panel thickness Épaisseur du panneau	Contatti Contacts Contacts	DIM "A"
Fissaggio Snap-In Snap-In fixing Fixation à enclenchement			
PX6951028	1	2,8	33,1
PX6951528	1,5	2,8	33,1
PX6952028	2	2,8	33,1
PX6953028	3	2,8	33,1
PX6951063	1	6,3	35,4
PX6951563	1,5	6,3	35,4
PX6952063	2	6,3	35,4
PX6953063	3	6,3	35,4
Fissaggio a vite orizzontale Horizontal screw fixing Fixation horizontale à vis			
PX6750028	-	2,8	33,1
PX6750063	-	6,3	35,4
IEC Lock IEC Lock IEC Lock			
•PX6951563/LK	1,5	6,3	NEW

Dimensioni | Dimensions | Dimensions

PX 695 - PX 695/LK



PX 675



List No
PX0675/28
PX0675/63



50 pz
50 pcs
50 pces



pronta
in stock
en stock



• omologato
approved
homologué



a richiesta alveoli di protezione
shuttered holes upon request
sur demande avec obturateurs de protection

PRESE E SPINE

IEC connectors | *Fiches et prises*



PX 611



PX 601

SPINE CON PORTAFUSIBILE

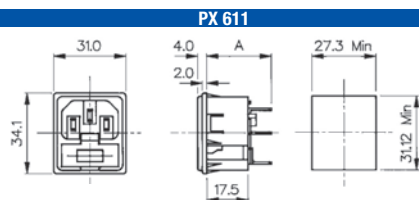
IEC power inlets fused | *Prises mâles avec porte-fusibles*

Tensione 250 V	Voltage 250 V	Tension 250 V
Corrente 10 A	Current 10 A	Courant 10 A
Contatti Ottone stagnato	Contacts Tinned brass	Contacts Laiton étamé
Corpo Nylon UL94-V0	Body Nylon UL94-V0	Corps Nylon UL94-V0
Norme riferimento EN60320-1	Standards EN60320-1	Normes EN60320-1
Cod. omologazione Bulgin PF0001 - PF0011	Approval code Bulgin PF0001 - PF0011	Code d'homologation Bulgin PF0001 - PF0011

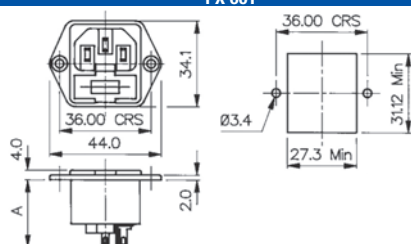


Code Code	Spessore pannello Panel thickness Epaisseur du panneau	Contatti Contacts Contacts	DIM "A"
Fissaggio Snap-In Snap-In fixing Fixation à enclenchement			
PX6111028	1	2,8	27
PX6111528	1,5	2,8	27
PX6112028	2	2,8	27
PX6113028	3	2,8	27
PX6111063	1	6,3	28,6
PX6111563	1,5	6,3	28,6
PX6112063	2	6,3	28,6
PX6113063	3	6,3	28,6
Fissaggio a vite orizzontale Horizontal screw fixing Fixation horizontale à vis			
PX6010028	-	2,8	27,0
PX6010063	-	6,3	28,6

Dimensioni | Dimensions | Dimensions



PX 601



PX 633



PX 630

SPINE CON PORTAFUSIBILE BIPOLARE

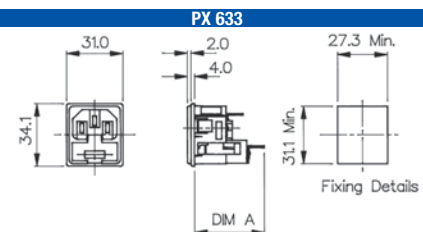
IEC power inlets fused twin | *Prises mâles avec porte-fusibles bipolaire*

Tensione 250 V	Voltage 250 V	Tension 250 V
Corrente 10 A	Current 10 A	Courant 10 A
Contatti Ottone stagnato	Contacts Tinned brass	Contacts Laiton étamé
Corpo Nylon UL94-V0	Body Nylon UL94-V0	Corps Nylon UL94-V0
Norme riferimento EN60320-1	Standards EN60320-1	Normes EN60320-1
Cod. omologazione Bulgin PF0030 - PF0033	Approval code Bulgin PF0030 - PF0033	Code d'homologation Bulgin PF0030 - PF0033

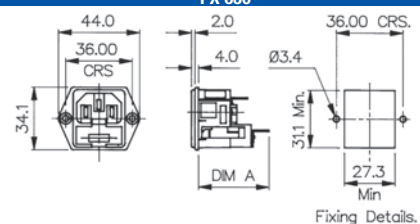


Code Code	Spessore pannello Panel thickness Epaisseur du panneau	Contatti Contacts Contacts	DIM "A"
Fissaggio Snap-In Snap-In fixing Fixation à enclenchement			
PX6331028	1	2,8	38
PX6331528	1,5	2,8	38
PX6332028	2	2,8	38
PX6333028	3	2,8	38
PX6331063	1	6,3	40
PX6331563	1,5	6,3	40
PX6332063	2	6,3	40
PX6333063	3	6,3	40
Fissaggio a vite orizzontale Horizontal screw fixing Fixation horizontale à vis			
PX6300028	-	2,8	38
PX6300063	-	6,3	40

Dimensioni | Dimensions | Dimensions



PX 630



PRESE E SPINE

IEC connectors | *Fiches et prises*



SPINE DA CIRCUITO STAMPATO

PCB IEC power in lets | *Prises mâles pour circuit imprimé*

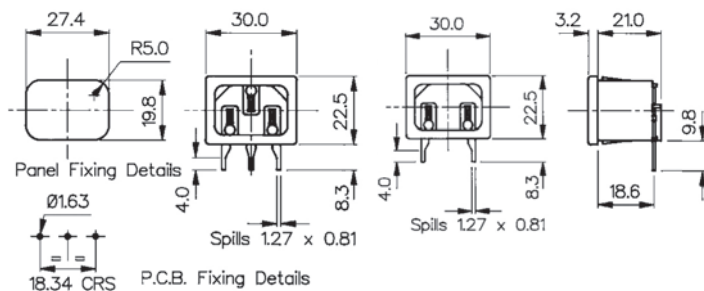
Tensione 250 V	Voltage 250 V	Tension 250 V
Corrente 10 A Europa / 15 A USA	Current 10 A Europe / 15 A USA	Courant 10 A Europe / 15 A USA
Contatti Ottone stagnato	Contacts Tinned brass	Contacts Laiton étamé
Corpo Nylon UL94-V0	Body Nylon UL94-V0	Corps Nylon UL94-V0
Norme di riferimento EN60320-1	Standards EN60320-1	Normes EN60320-1
Cod. omologazione Bulgin PX0575/..PC - PX0691/.. PC PX0580/..PC PX0580/..PC/7LC	Approval code Bulgin PX0575/..PC - PX0691/.. PC PX0580/..PC PX0580/..PC/7LC	Code d'homologation Bulgin PX0575/..PC - PX0691/..PC PX0580/..PC PX0580/..PC/7LC



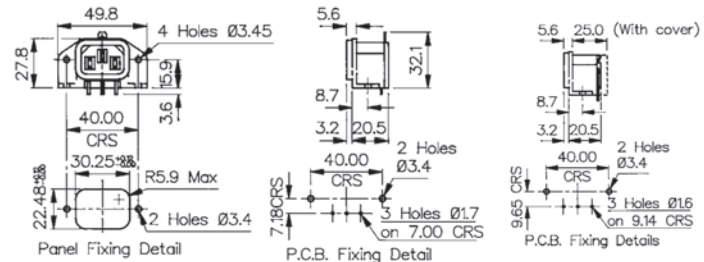
Codice Code Code	Spessore pannello Panel thickness Épaisseur du panneau	Passo Pitch Pas	
Fissaggio Snap-In Snap-In fixing Fixation à enclenchement			
PX5851000	1	-	100
PX5851500	1,5	-	100
PX5852000	2	-	100
PX5853000	3	-	100
Fissaggio a vite orizzontale Horizontal screw fixing Fixation horizontale à vis			
PX5820000	-	7	50
PX5810000	-	9,1	50
Bipolare Double pole Bipolaire			
•PX6921000	1	-	100
•PX6921500	1,5	-	100
•PX6922000	2	-	100
•PX6923000	3	-	100

Dimensioni | Dimensions | Dimensions

PX 585 / PX 692



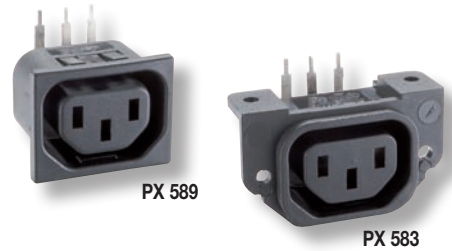
PX 582 / PX 581



pronta
in stock
en stock



• non omologato
not approved
non homologué



PRESE DA CIRCUITO STAMPATO

PCB IEC power out lets | *Prises femelles pour circuit imprimé*

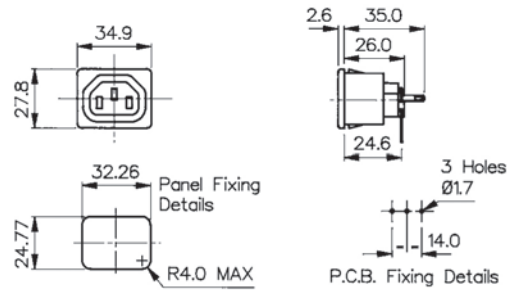
Tensione 250 V	Voltage 250 V	Tension 250 V
Corrente 10 A Europa / 15 A USA	Current 10 A Europe / 15 A USA	Courant 10 A Europe / 15 A USA
Contatti Ottone stagnato passo 7mm	Contacts Tinned brass 7mm centres	Contacts Laiton étamé pas 7 mm
Corpo Nylon UL94-V0	Body Nylon UL94-V0	Corps Nylon UL94-V0
Norme di riferimento EN 60320-2	Standards EN 60320-2	Normes EN 60320-2
Cod. omologazione Bulgin PX0695/..PC - PX0675/PC	Approval code Bulgin PX0695/..PC - PX0675/PC	Code d'homologation Bulgin PX0695/..PC - PX0675/PC



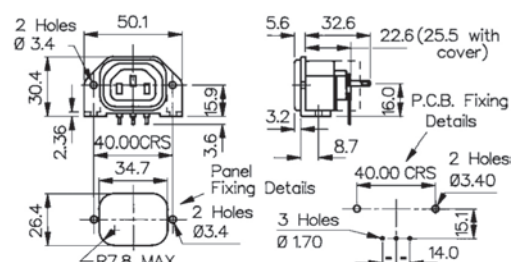
Codice Code Code	Spessore pannello Panel thickness Épaisseur du panneau	
Fissaggio Snap-In Snap-In fixing Fixation à enclenchement		
•PX5891000	1	100
•PX5891500	1,5	100
•PX5892000	2	100
•PX5893000	3	100
Fissaggio a vite orizzontale Horizontal screw fixing Fixation horizontale à vis		
PX5830000	-	50

Dimensioni | Dimensions | Dimensions

PX 589



PX 583



pronta
in stock
en stock

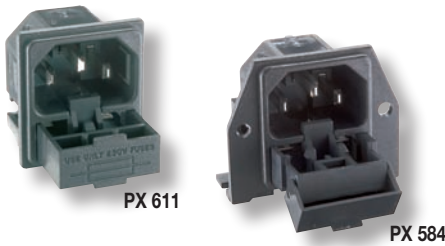


• non omologato
not approved
non homologué



PRESE E SPINE

IEC connectors | *Fiches et prises*



PX 611

PX 584

SPINE CON PORTAFUSIBILE DA C.S.

PCB IEC power inlets fused | *Prises mâles avec porte-fusible pour C.I.*

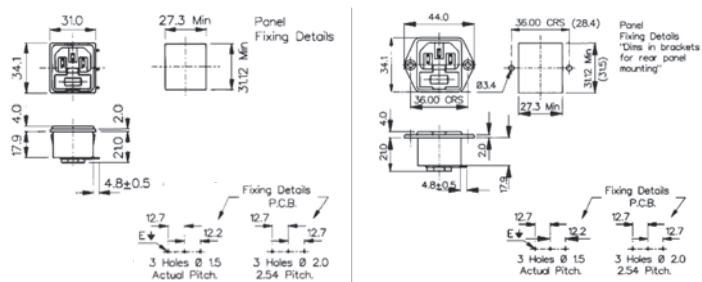
Tensione 250 V	Voltage 250 V	Tension 250 V
Corrente 10 A	Current 10 A	Courant 10 A
Contatti Ottone stagnato	Contacts Tinned brass	Contacts Laiton étamé
Corpo Nylon UL94-V0	Body Nylon UL94-V0	Corps Nylon UL94-V0
Norme riferimento EN60320-1	Standards EN60320-1	Normes EN60320-1
Cod. omologazione Bulgin PF0011../PC PF0001/PC - PF0030/PC	Approval code Bulgin PF0011../PC PF0001/PC - PF0030/PC	Code d'homologation Bulgin PF0011../PC PF0001/PC - PF0030/PC



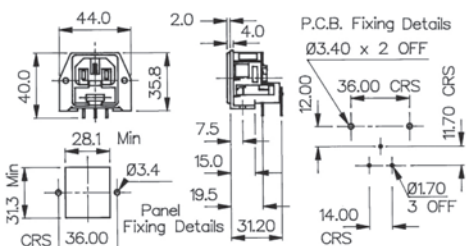
Codice Code Code	Spessore pannello Panel thickness Épaisseur du panneau	Portafusibile Fuseholder Porte-fusible
Fissaggio Snap-In Snap-In fixing Fixation à enclenchement		
PX6111000	1	unipolare/single pole/unipolaire
PX6111500	1,5	unipolare/single pole/unipolaire
PX6112000	2	unipolare/single pole/unipolaire
PX6113000	3	unipolare/single pole/unipolaire
Fissaggio a vite orizzontale Horizontal screw fixing Fixation horizontale à vis		
PX6010000	-	unipolare/single pole/unipolaire
•PX5840000	-	bipolare/double pole/bipolaire

Dimensioni | Dimensions | Dimensions

PX 611 - PX601



PX 584



PX6010063/UN



PX5800063/UN

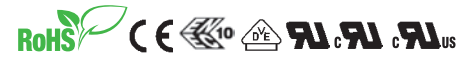


PX6750063/UN

SPINE E PRESE A FISSAGGIO UNIVERSALE

IEC connectors with universal fixing | *Fiches et prises avec fixation universel*

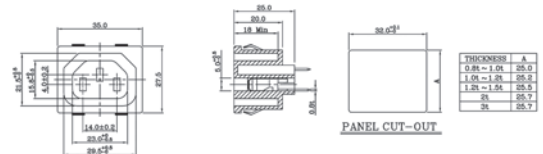
Tensione 250 V	Voltage 250 V	Tension 250 V
Corrente 10 A Europa / 15 A USA	Current 10 A Europe / 15 A USA	Courant 10 A Europe / 15 A USA
Contatti Ottone stagnato	Contacts Tinned brass	Contacts Laiton étamé
Corpo Termoplastico UL94V-2	Body Thermoplastic UL94V-2	Corps Thermoplastique UL94V-2
Norme riferimento EN60320	Standards EN60320	Normes EN60320



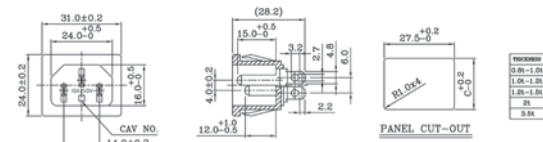
Codice Code Code	Contatti Contacts Contacts	Omologazioni Approval Homologation
Presi Outlet Prise femelle		
PX6750063/UN	6,3	
Spina Inlet Prise mâle		
PX5800063/UN	6,3	
Spina con portafusibile unipolare Inlet with single pole fuse holder Prise mâle avec porte-fusible unipolaire		
PX6010063/UN	6,3	

Dimensioni | Dimensions | Dimensions

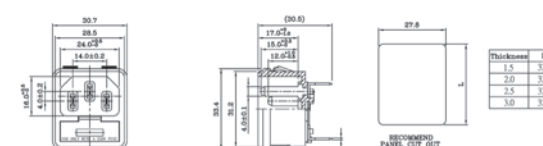
PX6750063/UN



PX5800063/UN



PX6010063/UN



PRESE E SPINE

IEC connectors | *Fiches et prises*



PX 691

PX 690

SPINE DA PANNELLO BIPOLARI

IEC double pole inlets | *Prises mâles bipolaires pour panneau*

Tensione 250 V	Voltage 250 V	Tension 250 V
Corrente 10 A Europa / 15 A USA	Current 10 A Europe / 15 A USA	Courant 10 A Europe / 15 A USA
Contacti Ottone stagnato	Contacts Tinned brass	Contacts Laiton étamé
Corpo Nylon UL94-V0	Body Nylon UL94-V0	Corps Nylon UL94-V0
Norme riferimento EN 60320-1	Standards EN 60320-1	Normes EN 60320-1
Cod. omologazione Bulgin PX0690 - PX0691	Approval code Bulgin PX0690 - PX0691	Code d'homologation Bulgin PX0690 - PX0691



Codice Code Code	Spessore pannello Panel thickness Épaisseur du panneau	Contacti Contacts Contacts	DIM "A"
------------------------	--	----------------------------------	---------

Fissaggio Snap-In | Snap-In fixing | Fixation à enclenchement

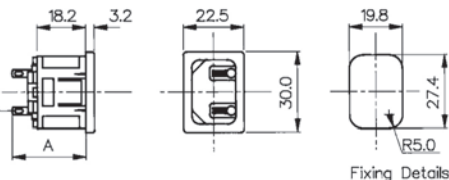
PX6911028	1	2,8	28
PX6911528	1,5	2,8	28
PX6912028	2	2,8	28
PX6913028	3	2,8	28
PX6911063	1	6,3	29,2
PX6911563	1,5	6,3	29,2
PX6912063	2	6,3	29,2
PX6913063	3	6,3	29,2

Fissaggio a vite orizzontale | Horizontal screw fixing | Fixation horizontale à vis

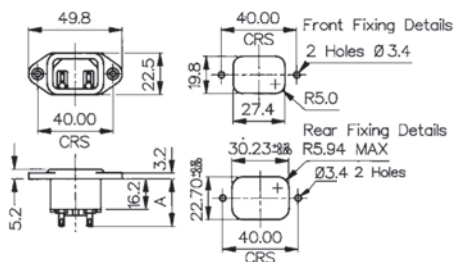
PX6900028	-	2,8	25,7
PX6900063	-	6,3	27,2

Dimensioni | Dimensions | Dimensions

PX 691



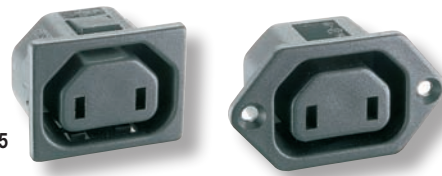
PX 690



50 pz
50 pcs
50 pces



pronta
in stock
en stock



PX 725

PX 705

PRESE DA PANNELLO BIPOLARI

IEC double pole outlets | *Prises femelles bipolaires pour panneau*

Tensione 250 V	Voltage 250 V	Tension 250 V
Corrente 10 A Europa / 15 A USA	Current 10 A Europe / 15 A USA	Courant 10 A Europe / 15 A USA
Contacti Ottone stagnato	Contacts Tinned brass	Contacts Laiton étamé
Corpo Nylon UL94-V0	Body Nylon UL94-V0	Corps Nylon UL94-V0
Norme riferimento EN 60320-2-2	Standards EN 60320-2-2	Normes EN 60320-2-2
Cod. omologazione Bulgin PX0705 - PX0725	Approval code Bulgin PX0705 - PX0725	Code d'homologation Bulgin PX0705 - PX0725



Codice Code Code	Spessore pannello Panel thickness Épaisseur du panneau	Contacti Contacts Contacts	DIM "A"
------------------------	--	----------------------------------	---------

Fissaggio Snap-In | Snap-In fixing | Fixation à enclenchement

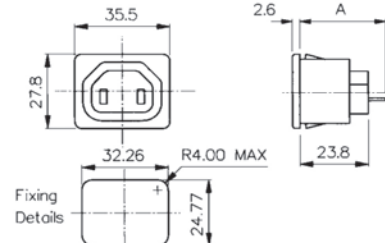
PX7251028	1	2,8	33,1
PX7251528	1,5	2,8	33,1
PX7252028	2	2,8	33,1
PX7253028	3	2,8	33,1
PX7251063	1	6,3	35,4
PX7251563	1,5	6,3	35,4
PX7252063	2	6,3	35,4
PX7253063	3	6,3	35,4

Fissaggio a vite orizzontale | Horizontal screw fixing | Fixation horizontale à vis

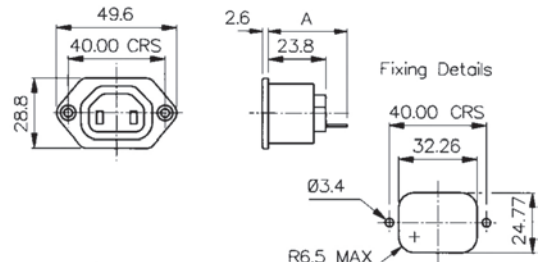
PX7050028	-	2,8	33,1
PX7050063	-	6,3	35,4

Dimensioni | Dimensions | Dimensions

PX 725



PX 705



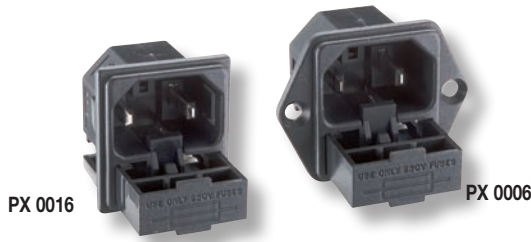
50 pz
50 pcs
50 pces



pronta
in stock
en stock

PRESE E SPINE

IEC connectors | *Fiches et prises*



PX 0016

PX 0006

SPINE UNIPOLARI CON PORTAFUSIBILE

IEC single pole inlets fused | *Prises mâles unipolaires avec porte-fusibile*

Tensione 250 V	Voltage 250 V	Tension 250 V
Corrente 10 A	Current 10 A	Courant 10 A
Contatti Ottone stagnato	Contacts Tinned brass	Contacts Laiton étamé
Corpo Nylon UL94-V0	Body Nylon UL94-V0	Corps Nylon UL94-V0
Norme riferimento EN 60320-1	Standards EN 60320-1	Normes EN 60320-1
Cod. omologazione Bulgin PF0006 - PF0016	Approval code Bulgin PF0006 - PF0016	Code d'homologation Bulgin PF0006 - PF0016



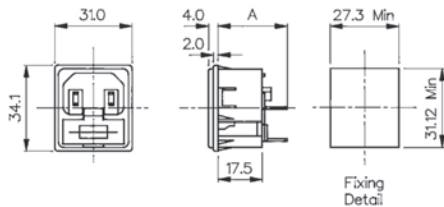
Code Code	Spessore pannello Panel thickness Epaisseur du panneau	Contatti Contacts	Portafusibile Fuseholder Porte-fusible	DIM "A"
--------------	--	----------------------	--	---------

Fissaggio Snap-In Snap-In fixing Fixation à enclenchement				
PX00161028	1	2,8	unipolare/single pole/unipolaire	27,6
PX00161528	1,5	2,8	unipolare/single pole/unipolaire	27,6
PX00162028	2	2,8	unipolare/single pole/unipolaire	27,6
PX00163028	3	2,8	unipolare/single pole/unipolaire	27,6
PX00161063	1	6,3	unipolare/single pole/unipolaire	28,6
PX00161563	1,5	6,3	unipolare/single pole/unipolaire	28,6
PX00162063	2	6,3	unipolare/single pole/unipolaire	28,6
PX00163063	3	6,3	unipolare/single pole/unipolaire	28,6

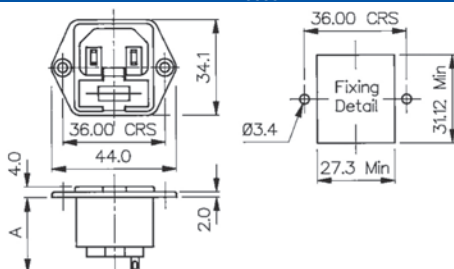
a vite orizzontale Horizontal screw fixing Fixation horizontale à vis				
PX00060028	-	2,8	unipolare/single pole/unipolaire	27
PX00060063	-	6,3	unipolare/single pole/unipolaire	28,6

Dimensioni | Dimensions | Dimensions

PX 0016



PX 0006



100 pz
100 pcs
100 pces



pronta
in stock
en stock



PX 595

PX 590

SPINE DA PANNELLO 120°C

IEC power inlets 120°C | *Prises mâles 120°C pour panneau*

Tensione 250 V	Voltage 250 V	Tension 250 V
Corrente 10 A Europa / 15 A USA	Current 10 A Europe / 15 A USA	Courant 10 A Europe / 15 A USA
Contatti Ottone stagnato	Contacts Tinned brass	Contacts Laiton étamé
Corpo Nylon UL94-V0 con pin di sicurezza	Body Nylon UL94-V0 with safety pin	Corps Nylon UL94-V0 avec pin de sécurité
Norme riferimento EN 60320-1	Standards EN 60320-1	Normes EN 60320-1
Cod. omologazione Bulgin PX590 - PX0595	Approval code Bulgin PX590 - PX0595	Code d'homologation Bulgin PX590 - PX0595



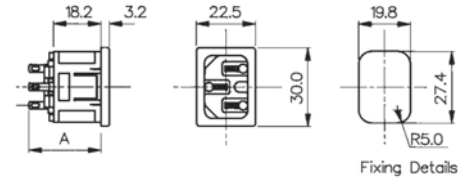
Code Code	Spessore pannello Panel thickness Epaisseur du panneau	Contatti Contacts	DIM "A"
--------------	--	----------------------	---------

Fissaggio Snap-In Snap-In fixing Fixation à enclenchement			
PX5951028	1	2,8	28
PX5951528	1,5	2,8	28
PX5952028	2	2,8	28
PX5953028	3	2,8	28
PX5951063	1	6,3	29,2
PX5951563	1,5	6,3	29,2
PX5952063	2	6,3	29,2
PX5953063	3	6,3	29,2

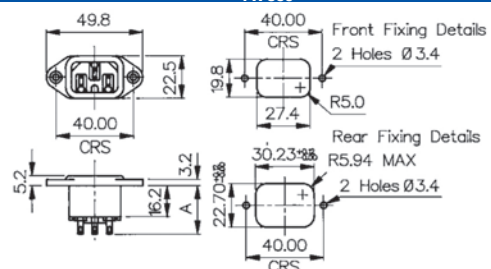
Fissaggio a vite orizzontale Horizontal screw fixing Fixation horizontale à vis			
PX5900028	-	2,8	25,7
PX5900063	-	6,3	27,2

Dimensioni | Dimensions | Dimensions

PX 595



PX 590



100 pz
100 pcs
100 pces



pronta
in stock
en stock

PRESE E SPINE DI ALIMENTAZIONE

Snap-in IEC outlets-inlets | *Fiches et prises d'alimentation*

PX7120048	Spina, Presa da incasso Inlet, Outlet	Inlet, Outlet	Prise mâle et femelle à enclenchement	
	PX7120048 SNAP-IN 10 A 250 V Contatti Lega rame stagnato a faston 4,8mm Corpo Termoplastico UL94-V0 Norme di riferimento IEC 60320	PX7120048 SNAP-IN 10 A 250 V Contacts Tin copper alloy faston 4,8mm Body Thermoplastic UL94-V0 Standards IEC 60320	PX7120048 à enclenchement 10 A 250 V Contacts Alliage de cuivre étamé faston 4,8mm Corps Thermoplastique UL94-V0 Normes IEC 60320	
		100 pz 100 pcs 100 pces	pronta in stock in stock en stock	

PX7221528	Spina, Presa da incasso Snap-in Outlet	Snap-in Outlet	Prise femelle à enclenchement	
	PX7221528 SNAP-IN 10 A 250 V Corpo Nylon UL94-V0 Contatti Ottone stagnato 2,8 a saldare Codice omologazione Bulgin PX0714/2 Norme di riferimento EN 60320-2-2	PX7221528 SNAP-IN 10 A 250 V Body Nylon UL94-V0 Contacts Tinned brass solder 2,8 Approval code Bulgin PX0714/2 Standards EN 60320-2-2	PX7221528 à enclenchement 10 A 250 V Corps Nylon UL94-V0 Contacts Laiton étamé 2,8 à souder Code d'homologation Bulgin PX0714/2 Normes EN 60320-2-2	
		12 pz 12 pcs 12 pces	pronta in stock in stock en stock	

PX7241528	Spina, Presa da incasso Snap-in Outlet	Snap-in Outlet	Prise femelle à enclenchement	
	PX7241528 SNAP-IN 10 A 250 V Corpo Nylon UL94-V0 Contatti Ottone stagnato 2,8 a saldare Pannello 1,5 mm Codice omologazione Bulgin PX0714/4 Norme di riferimento EN 60320-2-2	PX7241528 SNAP-IN 10 A 250 V Body Nylon UL94-V0 Contacts Tinned brass solder 2,8 Panel thickness 1.5 mm Approval code Bulgin PX0714/4 Standards EN 60320-2-2	PX7241528 à enclenchement 10 A 250 V Corps Nylon UL94-V0 Contacts Laiton étamé 2,8 à souder Epaisseur du panneau 1.5 mm Code d'homologation Bulgin PX0714/4 Normes EN 60320-2-2	
		1 pz 1 pc 1 pce	pronta in stock in stock en stock	

PG328 - PG075 PG987 - PG064	Protezione in gomma PVC UL94V-0	Insulation boot PVC UL94V-0	Protection en caoutchouc-PVC UL94V-0	
	PG328 adatta per: PX 575 - 579 - 580 - 590 - 595 PG075 adatta per: PX 675 - 695 - 705 - 725 PG987 adatta per: PX 601 - 611 - 633 - 0006 - 0016 PG064 adatta per: PX 598 - PX 596 Codice omologazione Bulgin PNO 11328 Bulgin PNO 12075 Bulgin PNO 11987 Bulgin PNO 14064	PG328 insulation for: PX 575 - 579 - 580 - 590 - 595 PG075 insulation for: PX 675 - 695 - 705 - 725 PG987 insulation for: PX 601 - 611 - 633 - 0006 - 0016 PG064 insulation for: PX 598 - PX 596 Approval code Bulgin PNO 11328 Bulgin PNO 12075 Bulgin PNO 11987 Bulgin PNO 14064	PG328 pour: PX 575 - 579 - 580 - 590 - 595 PG075 pour: PX 675 - 695 - 705 - 725 PG987 pour: PX 601 - 611 - 633 - 0006 - 0016 PG064 pour: PX 598 - PX 596 Code d'homologation Bulgin PNO 11328 Bulgin PNO 12075 Bulgin PNO 11987 Bulgin PNO 14064	
	<ul style="list-style-type: none"> • non adatto per versioni C.S. not suitable for PCB versions inadapté pour les versions C.I. 	50 pz 50 pcs 50 pces	pronta in stock in stock en stock	

PRESE E SPINE DI ALIMENTAZIONE

Snap-in IEC outlets-inlets | *Fiches et prises d'alimentation*

PX4000028	Spina da incasso bipolare 2,5 A 250 V Corpo Nylon UL94-V0 Contatti Ottone stagnato a saldare 2,8 mm Codice omologazione EDK AC - M04PB05	Panel mounting double-pole inlet 2,5 A 250 V Body Nylon UL94-V0 Contacts Tinned brass solder 2,8 Approval code EDK AC - M04PB05	Prise mâle bipolaire à enclenchement 2,5 A 250 V Corps Nylon UL94-V0 Contacts Laiton étamé 2,8 à souder Code d'homologation EDK AC - M04PB05	


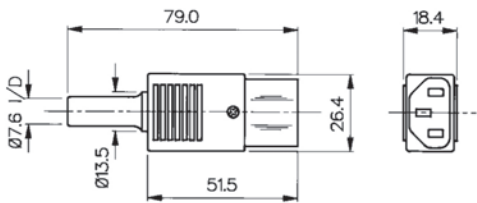








PX4100028	Spina da incasso snap-in bipolare 2,5 A 250 V Corpo Nylon UL94-V0 Contatti Ottone stagnato a saldare 2,8 mm Pannello 0,3-1,2 mm Codice omologazione EDK AC - M01SB02	Snap-in double-pole inlet 2,5 A 250 V Body Nylon UL94-V0 Contacts Tinned brass solder 2,8 Panel thickness 0,3-1,2 mm Approval code EDK AC - M01SB02	Prise mâle bipolaire à enclenchement 2,5 A 250 V Corps Nylon UL94-V0 Contacts Laiton étamé 2,8 à souder Epaisseur du panneau 0,3-1,2 mm Code d'homologation EDK AC - M01SB02	


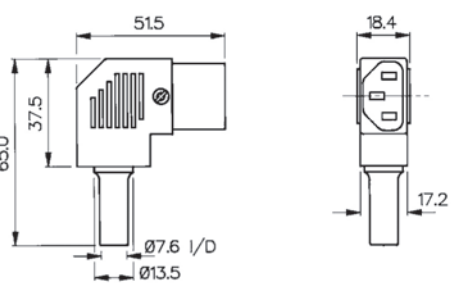








PX3900000	Spina da incasso 2,5 A 250 V Tripolare da circuito stampato Corpo Nylon UL94-V0 Contatti Ottone stagnato Codice omologazione EDK AC - M16PB94	Snap-in inlet 2,5 A 250 V Three-pole inlet for PCB Body Nylon UL94-V0 Contacts Tinned brass Approval code EDK AC - M16PB94	Prise mâle à enclenchement 2,5 A 250 V Tripolaire à enclenchement pour C.I. Corps Nylon UL94-V0 Contacts Laiton étamé Code d'homologation EDK AC - M16PB94	


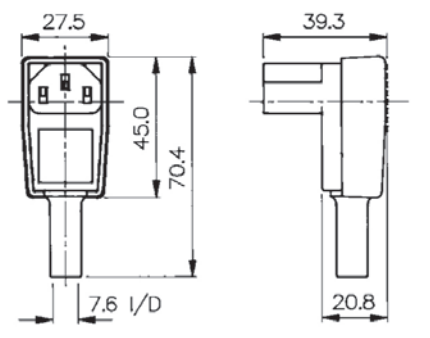






PX4010048 - PX4200048	Presca americana PX4010048 15 A 125 V Presca americana bipolare PX4200048 15 A 125 V Presca americana tripolare Corpo Nylon UL94-V0 Contatti Ottone stagnato a saldare 4,8 mm Codice omologazione EDK AC - T03FB03 EDK AC - G07FB18	American outlet PX4010048 15 A 125 V Double pole American outlet PX4200048 15 A 125 V Three-pole American outlet Body nylon UL94-V0 Contacts Tinned brass solder 4,8 mm Approval code EDK AC - T03FB03 EDK AC - G07FB18	Prise femelle américaine PX4010048 15 A 125 V Prise femelle américaine bipolaire PX4200048 15 A 125 V Prise femelle américaine tripolaire Corps nylon UL94-V0 Contacts Laiton étamé 4,8 mm à souder Code d'homologation EDK AC - T03FB03 EDK AC - G07FB18	


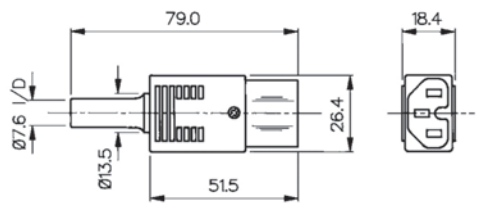








PRESE E SPINE DI ALIMENTAZIONE

IEC outlets-inlets | *Fiches et prises d'alimentation*

PX5870000	Presenza volante	In-line socket	Fiche femelle droite	
	10 A 250 V Corpo Nylon UL94-V0 Contatti Ottone nichelato Codice omologazione Bulgin PX0587 Norme di riferimento EN 60320-1	10 A 250 V Body Nylon UL94-V0 Contacts Nickel plated brass Approval code Bulgin PX0587 Standards EN 60320-1	10 A 250 V Corps Nylon UL94-V0 Contacts Laiton nickelé Code d'homologation Bulgin PX0587 Normes EN 60320-1	
	     	 50 pz 50 pcs 50 pces	 pronta in stock en stock	


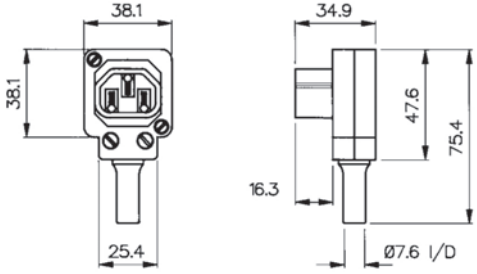






PX5860000	Presenza volante	In-line socket	Fiche femelle coudée	
	10 A 250 V Corpo Nylon UL94-V0 Contatti Ottone nichelato Codice omologazione Bulgin PX0587/SE Norme di riferimento EN 60320-1	10 A 250 V Body Nylon UL94-V0 Contacts Nickel plated brass Approval code Bulgin PX0587/SE Standards EN 60320-1	10 A 250 V Corps Nylon UL94-V0 Contacts Laiton nickelé Code d'homologation Bulgin PX0587/SE Normes EN 60320-1	
	     	 25 pz 25 pcs 25 pces	 pronta in stock en stock	


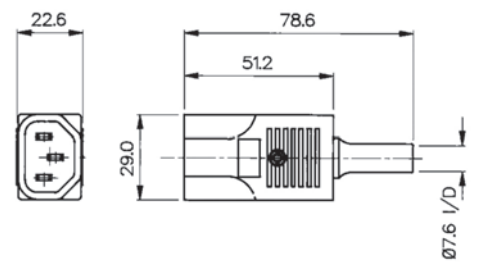








PX5880000	Presenza volante	In-line socket	Fiche femelle coudée	
	10 A 250 V Corpo Nylon UL94-V0 Contatti Ottone nichelato Codice omologazione Bulgin PX0588 Norme di riferimento EN 60320-1	10 A 250 V Body Nylon UL94-V0 Contacts Nickel plated brass Approval code Bulgin PX0588 Standards EN 60320-1	10 A 250 V Corps Nylon UL94-V0 Contacts Laiton nickelé Code d'homologation Bulgin PX0588 Normes EN 60320-1	
	   	 60 pz 60 pcs 60 pces	 pronta in stock en stock	


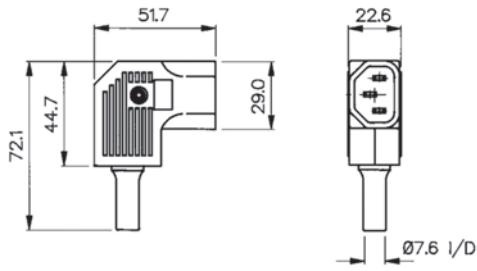








PX5970000	Presenza volante	In-line socket	Fiche femelle droite	
	10 A 250 V Corpo Nylon UL94-V0 Contatti Ottone nichelato Codice omologazione Bulgin PX0597 Norme di riferimento EN 60320-1 Massima temperatura 120°	10 A 250 V Body Nylon UL94-V0 Contacts Nickel plated brass Approval code Bulgin PX0597 Standards EN 60320-1 Max temperature 120°	10 A 250 V Corps Nylon UL94-V0 Contacts Laiton nickelé Code d'homologation Bulgin PX0597 Normes EN 60320-1 Température max 120°	
	     	 50 pz 50 pcs 50 pces	 pronta in stock en stock	


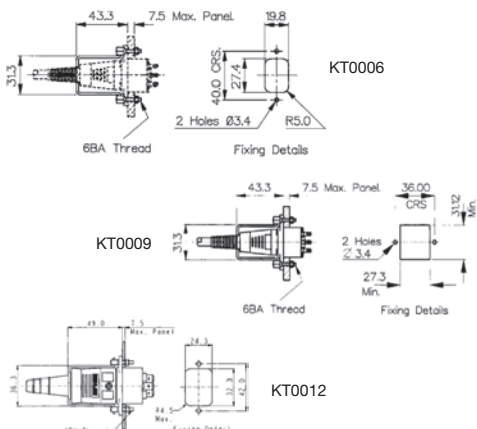



PRESE E SPINE DI ALIMENTAZIONE

IEC outlets-inlets | *Fiches et prises d'alimentation*

PX6850000	Spina volante	In-line plug	Fiche mâle coudée	
	10 A 250 V Corpo Nylon UL94-V0 Contatti Ottone nichelato Codice omologazione Bulgin PX0685 Norme di riferimento EN 60320-2-2	10 A 250 V Body Nylon UL94-V0 Contacts Nickel plated brass Approval code Bulgin PX0685 Standards EN 60320-2-2	10 A 250 V Corps Nylon UL94-V0 Contacts Laiton nickelé Code d'homologation Bulgin PX0685 Normes EN 60320-2-2	
	   	 20 pz 20 pcs 20 pces	 pronta in stock en stock	

PX6860000	Spina volante	In-line plug	Fiche mâle droite	
	10 A 250 V Corpo Nylon UL94-V0 Contatti Ottone nichelato Codice omologazione Bulgin PX 0686 Norme di riferimento EN 60320-2-2	10 A 250 V Body Nylon UL94-V0 Contacts Nickel plated brass Approval code Bulgin PX 0686 Standards EN 60320-2-2	10 A 250 V Corps Nylon UL94-V0 Contacts Laiton nickelé Code d'homologation Bulgin PX 0686 Normes EN 60320-2-2	
	     	 20 pz 20 pcs 20 pces	 pronta in stock en stock	

PX6870000	Spina volante	In-line plug	Fiche mâle coudée	
	10 A 250 V Corpo Nylon UL94-V0 Contatti Ottone nichelato Codice omologazione Bulgin PX0686/SE Norme di riferimento EN 60320-2-2	10 A 250 V Body Nylon UL94-V0 Contacts Nickel plated brass Approval code Bulgin PX0686/SE Standards EN 60320-2-2	10 A 250 V Corps Nylon UL94-V0 Contacts Laiton nickelé Code d'homologation Bulgin PX0686/SE Normes EN 60320-2-2	
	     	 20 pz 20 pcs 20 pces	 pronta in stock en stock	

KT0006 - KT0009 - KT0012	Molla di ritengo	Retaining clip	Ressort de maintien	
	KT0006 da impiegare con: PX 590 - PX 587 - PX 675 PX 580 - PX 597 - PX 793 PX 686 - PX 690 KT0009 da impiegare con: PX 601 - PX 587 - PX 630 PX 597 KT0012 da impiegare con: PX 596 - PX 599 Lock System Universale pag. 10-53	KT0006 to be used with: PX 590 - PX 587 - PX 675 PX 580 - PX 597 - PX 793 PX 686 - PX 690 KT0009 to be used with: PX 601 - PX 587 - PX 630 PX 597 KT0012 to be used with: PX 596 - PX 599 Universal Lock System pag. 10-53	KT0006 pour: PX 590 - PX 587 - PX 675 PX 580 - PX 597 - PX 793 PX 686 - PX 690 KT0009 pour: PX 601 - PX 587 - PX 630 PX 597 KT0012 pour: PX 596 - PX 599 Système de verrouillage universel pag. 10-53	
		 50 pz 50 pcs 50 pces	 pronta in stock en stock	

PRESE E SPINE DI ALIMENTAZIONE

Plugs and sockets | *Fiches et prises d'alimentation*

PX6490000	Spina volante bipolare + terra	In-line double pole + e plug	Prise mâle droite bipolaire plus terre	
	3 A 250 V Corpo Nylon Contatti Ottone stagnato a saldare Codice omologazione Bulgin PX0649	3 A 250 V Body Nylon Contacts Tinned brass solder Approval code Bulgin PX0649	3 A 250 V Corps Nylon Contacts Laiton étamé à souder Code d'homologation Bulgin PX0649	
	50 pz 50 pcs 50 pces		pronta in stock en stock	

PX6500000	Presca da incasso bipolare + terra	Panel mounting double-pole + e socket	Prise femelle à enclenchement bipolaire plus terre	
	3 A 250 V Corpo Nylon caricato vetro Contatti Ottone argentato a saldare Codice omologazione Bulgin PX 0650	3 A 250 V Body Glass filled nylon Contacts Silver plated brass. solder Approval code Bulgin PX 0650	3 A 250 V Corps Nylon chargé verre Contacts Laiton argenté à souder Code d'homologation Bulgin PX 0650	
	50 pz 50 pcs 50 pces		pronta in stock en stock	

PX6510000	Spina volante	In-line plug	Prise mâle coudée	
	3 A 250 V Corpo Nylon caricato vetro Contatti Ottone nichelato a vite Codice omologazione Bulgin SA 2403	3 A 250 V Body Glass filled nylon Contacts Nickel plated brass screw fixing Approval code Bulgin SA 2403	3 A 250 V Corps Nylon chargé verre Contacts Laiton nickelé à vis Code d'homologation Bulgin SA 2403	
	50 pz 50 pcs 50 pces		pronta in stock en stock	a richiesta 4 poli upon request 4 poles 4 pôles sur demande

PX6520000	Presca da incasso tripolare	Panel mounting three-pole socket	Prise femelle tripolaire	
	3 A 250 V Corpo Nylon caricato vetro Contatti Ottone stagnato a saldare Codice omologazione Bulgin SA 2404	3 A 250 V Body Glass filled nylon Contacts Tinned brass Approval code Bulgin SA 2404	3 A 250 V Corps Nylon chargé verre Contacts Laiton étamé à souder Code d'homologation Bulgin SA 2404	
	50 pz 50 pcs 50 pces		pronta in stock en stock	a richiesta 4 poli upon request 4 poles 4 pôles sur demande