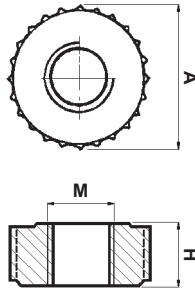
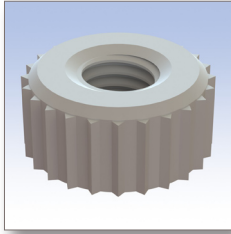
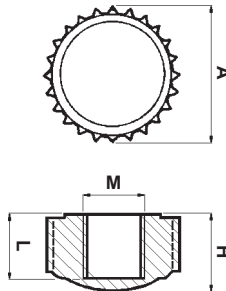
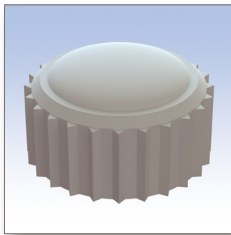


Tipo 1 - Aperto
Type 1 - Open



Tipo 2 - Chiuso
Type 2 - Closed



■ **Materiale: PA 6.6 25% C.V. / Material: PA 6.6 25% GF**
■ **Autoestinguenza: HB (UL94) / UL Flammability: HB (UL94)**

■ **Colore: Nero o bianco / Colour: Black or white**
■ **Tutte le quote sono in mm. / All dimensions are in mm.**

CODICE P/N	TIPO TYPE	DIMENSIONI SIZES				NOTE NOTES	CONF. PKG.
		A	H	L	M		
1055 BB00	1	8	3		M 3x0,5		pz. / pcs. 1.000
1056 BB00	1	10	4,2		M 4x0,7		1.000
1057 BB00	1	13	5,2		M 5x0,8		1.000
1058 BB00	1	12,5	6		M 6x1		1.000
1059 BB00	1	17,5	8,3		M 8x1,25		1.000
1060 BB00	1	21,5	10		M 10x1,5		1.000
1043 BB00	2	8	4	3	M 3x0,5		1.000
1044 BB00	2	10	5,5	4,2	M 4x0,7		1.000
1045 BB00	2	13	6,5	5,2	M 5x0,8		1.000
1046 BB00	2	12,5	7,5	6	M 6x1		1.000
1047 BB00	2	17,5	10	8,3	M 8x1,25		1.000
1048 BB00	2	21,5	12,5	10	M 10x1,5		1.000