

■ **Materiale: PA 6.6 / Material: PA 6.6**

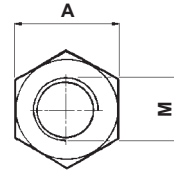
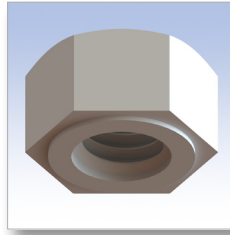
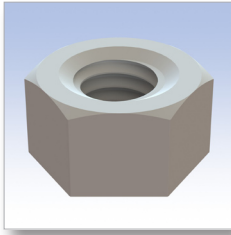
■ **Colore: Natural / Colour: Natural**

■ **Autoestinguenza: V2 (UL94) / UL Flammability: V2 (UL94)**

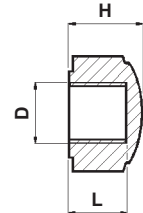
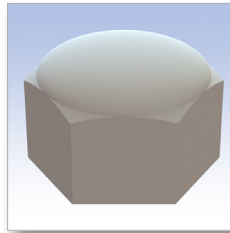
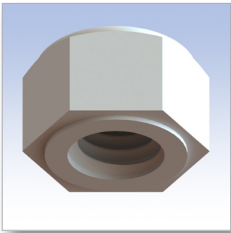
■ **Tutte le quote sono in mm. / All dimensions are in mm.**

CODICE P/N	DIMENSIONI SIZES			NOTE NOTES	CONF. PKG.
	A	H	M		
9200 AA00	5,5	2,4	M3x0,5		pz. / pcs. 1.000
9201 AA00	7	3,2	M4x0,7		1.000
9202 AA00	8	4,0	M5x0,8		1.000
9203 AA00	10	5,0	M6x1		1.000
9204 AA00	13	6,5	M8x1,25		1.000
9205 AA00	17	8,0	M10x1,5		1.000
9206 AA00	19	10,0	M12x1,5		1.000
9207 AA00	24	13,0	M16x1,5		1.000

Tipo 1 - Aperto
Type 1 - Open



Tipo 2 - Chiuso
Type 2 - Closed



■ **Materiale: PA 6.6 25% C.V. / Material: PA 6.6 25% GF**
■ **Autoestinguenza: HB (UL94) / UL Flammability: HB (UL94)**

■ **Colore: Naturale o nero / Colour: Natural or black**
■ **Tutte le quote sono in mm. / All dimensions are in mm.**

CODICE P/N	TIPO TYPE	DIMENSIONI SIZES				NOTE NOTES	CONF. PKG.
		A	H	L	M		
1049 BB00	1	5,5	3		M3x0,5		1.000 pz. / pcs.
1050 BB00	1	7	4,2		M4x0,7		1.000
1051 BB00	1	8	5,2		M5x0,8		1.000
1052 BB00	1	10	6		M6x1		1.000
1053 BB00	1	13	8,3		M8x1,25		1.000
1054 BB00	1	17	10		M10x1,5		1.000
1037 BB00	2	5,5	4	3	M3x0,5		1.000
1038 BB00	2	7	5,5	4,2	M4x0,7		1.000
1039 BB00	2	8	6,5	5,2	M5x0,8		1.000
1040 BB00	2	10	7,5	6	M6x1		1.000
1041 BB00	2	13	10	8,3	M8x1,25		1.000
1042 BB00	2	17	12,5	10	M10x1,5		1.000