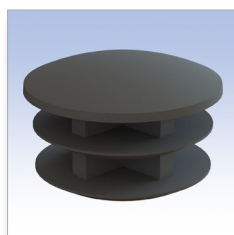


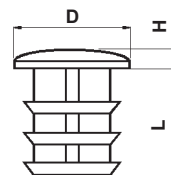
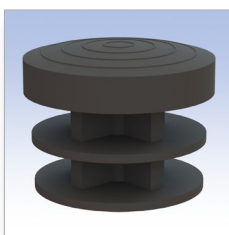
Tipo 1 Type 1



Tipo 2 Type 2



Tipo 3 Type 3



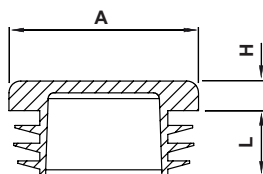
■ Materiale: Polietilene PE-LD / Material: Polyethylene PE-LD

■ Colore: Nero / Colour: Black

■ Tutte le quote sono in mm. / All dimensions are in mm.

CODICE P/N	TIPO TYPE	DIMENSIONI SIZES			CONF. PKG. pz./pcs.
		D	H	L	
3428 EA01	1	18	7,5	12	1.000
3429 EA01	1	20	9	15	1.000
3430 EA01	1	22	10	15	1.000
3431 EA01	1	25	11	15	1.000
3432 EA01	1	30	13,5	18	1.000
3433 EA01	1	32	16,5	18	1.000
3434 EA01	1	35	17	20	1.000
3410 EA01	2	10	2	8	2.500
3411 EA01	2	12	2	8	2.500
3412 EA01	2	14	2	8	2.500
3413 EA01	2	15	3	8	2.500
3414 EA01	2	16	3	9,5	2.000
3415 EA01	2	18	3	9	2.000
3416 EA01	2	20	4	9,5	2.000
3417 EA01	2	22	4	10	2.000
3418 EA01	2	25	4	13	2.000
3419 EA01	2	28	5	15	1.500
3420 EA01	2	30	5	15	1.000
3421 EA01	2	32	5	16	1.000
3422 EA01	2	35	5	17	1.000
3423 EA01	2	40	5	17	1.000
3424 EA01	2	45	5	17	1.000
3425 EA01	2	50	5	17	1.000
3426 EA01	2	60	5	17	1.000
3427 EA01	2	80	6	17	1.000

CODICE P/N	TIPO TYPE	DIMENSIONI SIZES			CONF. PKG. pz./pcs.
		D	H	L	
3435 EA01	3	10	5	13	1.000
3436 EA01	3	12	5	14	1.000
3437 EA01	3	14	5	14	1.000
3438 EA01	3	16	5	16	1.000
3439 EA01	3	18	5	13	1.000
3440 EA01	3	20	5	13	1.000
3441 EA01	3	22	5	13	1.000
3442 EA01	3	24	5	20	1.000
3443 EA01	3	25	5	19	1.000
3444 EA01	3	26	5	20	1.000
3445 EA01	3	28	5	19	1.000
3446 EA01	3	30	5	19	1.000
3447 EA01	3	32	5	19	1.000
3448 EA01	3	35	5	20	1.000
3449 EA01	3	38	5	22	1.000
3450 EA01	3	40	5	22	1.000
3451 EA01	3	45	5	30	1.000
3452 EA01	3	50	5	22	1.000
3453 EA01	3	60	5	24	1.000
3454 EA01	3	80	5	33	1.000



■ **Materiale: Polietilene PE-LD** / Material: Polyethylene PE-LD

■ **Tutte le quote sono in mm.** / All dimensions are in mm.

■ **Colore: Nero** / Colour: Black

CODICE P/N	DIMENSIONI SIZES			TUBO PIPE	CONF. PKG.
	A	H	L		
9300 EA01	10	3,5	11,5	7,0 - 8,4	1.000
9301 EA01	12	3,5	11,5	8,0 - 10,4	1.000
9302 EA01	13	4	11,0	10,0 - 11,5	1.000
9303 EA01	14	4,5	11,5	11,0 - 13,0	1.000
9304 EA01	15	4	11,5	11,5 - 13,5	1.000
9305 EA01	16	5	11,0	12,0 - 14,5	1.000
9306 EA01	18	5	11,5	14,0 - 17,0	1.000
9307 EA01	19	4,5	11,5	15,0 - 17,0	1.000
9308 EA01	20	4,5	11,5	15,0 - 17,5	1.000
9309 EA01	21	5	11,5	17,0 - 19,4	1.000
9310 EA01	22	4,5	11,5	17,5 - 20,5	1.000
9311 EA01	23	4,5	11,5	19,0 - 21,5	1.000
9312 EA01	24	5	11,5	19,0 - 22,0	1.000
9313 EA01	25	4,5	11,5	20,5 - 23,0	1.000
9314 EA01	25	4,5	11,5	17,5 - 20,5	1.000
9315 EA01	26	4	11,5	20,5 - 23,5	1.000
9316 EA01	27	5	12,0	21,0 - 25,0	1.000
9317 EA01	28	5	12,0	23,0 - 25,5	1.000
9318 EA01	30	5	12,0	25,0 - 28,0	500
9319 EA01	30	5	11,5	21,0 - 25,0	500
9320 EA01	32	5	12,0	26,0 - 30,0	500
9321 EA01	34	5	11,5	28,0 - 32,0	500
9322 EA01	35	4,5	11,5	30,5 - 33,4	500
9323 EA01	36	4,5	11,5	31,0 - 33,5	500
9324 EA01	37	5	11,5	31,0 - 35,0	500
9325 EA01	38	5	11,0	32,0 - 36,0	500
9326 EA01	40	5	11,5	34,0 - 38,0	500
9327 EA01	40	5	11,5	30,0 - 34,0	500

CODICE P/N	DIMENSIONI SIZES			TUBO PIPE	CONF. PKG.
	A	H	L		
9328 EA01	40	4,5	11,5	34,0 - 36,0	500
9329 EA01	42	4,5	11,5	38,5 - 40,5	500
9330 EA01	42	5	11,5	37,0-40,4	500
9331 EA01	42	5	11,5	32,0-36,0	500
9332 EA01	45	5	11,5	41,0 - 42,5	500
9333 EA01	48	5	18,0	43,0 - 45,5	500
9334 EA01	50	4,5	10,0	46,0 - 48,0	500
9335 EA01	50	5	11,5	41,0 - 45,0	500
9336 EA01	50	5	11,5	37,0 - 41,0	500
9337 EA01	52	5	14,5	45,0 - 49,0	500
9338 EA01	55	5	11,5	49,0 - 53,0	500
9339 EA01	60	5	18,0	54,0 - 57,0	100
9340 EA01	60	5	16,5	50,0 - 54,0	100
9341 EA01	65	5	21,0	58,0 - 62,0	100
9342 EA01	70	5	21,0	61,0 - 66,0	100
9343 EA01	75	5	21,5	68,0 - 73,0	100
9344 EA01	76	5	21,5	68,1 - 72,9	100
9345 EA01	80	5	21,0	74,0 - 77,0	100
9346 EA01	85	6	21,0	78,0 - 82,0	100
9347 EA01	89	6	21,0	80,9 - 85,3	100
9348 EA01	90	5	21,0	82,0 - 87,0	100
9349 EA01	90	5	20,0	80,0 - 85,0	100
9350 EA01	100	6	28,0	91,0 - 96,0	100
9351 EA01	108	6	28,0	98,0 - 104,2	100
9352 EA01	110	6	28,0	101,0 - 106,0	100
9353 EA01	125	6	34,0	113,0 - 121,0	100
9354 EA01	150	6	34,0	136,0 - 146,0	100
9355 EA01	160	6	34,0	146,0 - 155,0	100