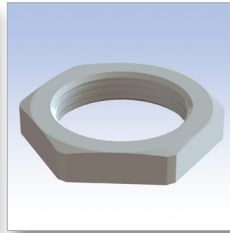
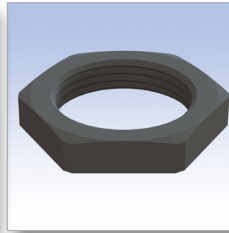


RAL 7001

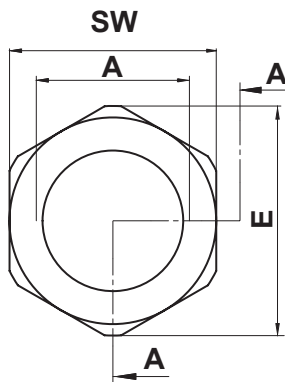
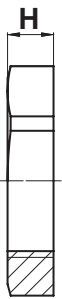


RAL 7035



RAL 9005

A-A



■ **Materiale: PA 6 GF (M50-M63 PA 6) /**
Material: PA 6 GF (M50-M63 PA6)

■ **Colore: Vedi tabella / Colour: See table**

■ **Autoestinguenza: HB (UL94) / UL Flammability: HB (UL94)**

■ **Temperatura d'esercizio: -20°C ~ +100° C / Operating**
temperature: 20°C ~ +100° C

■ **Metrico a norma EN 60423 / Metric as per EN 60423**

■ **Tutte le quote sono in mm. / All dimensions are in mm.**

CODICE P/N	CODICE P/N	CODICE P/N	DIMENSIONI SIZES				CONF. PKG.
			A	SW1	E	H	
RAL 7001	RAL 7035	RAL 9005					pz./pcs.
8641BB117001	8616BB117035	8608BB019005	M12x1,5	17	19	5	100
8642BB117001	8617BB117035	8609BB019005	M16x1,5	22	25	5	100
8643BB117001	8618BB117035	8610BB019005	M20x1,5	27	30	6	100
8644BB117001	8619BB117035	8611BB019005	M25x1,5	32	36	6	100
8645BB117001	8620BB117035	8612BB019005	M32x1,5	41	46	7	100
8646BB117001	8621BB117035	8613BB019005	M40x1,5	50	54	7	50
8647AA117001	8622AA117035	8614AA019005	M50x1,5	60	67	8	50
8648AA117001	8623AA117035	8615AA019005	M63x1,5	75	83	8	50