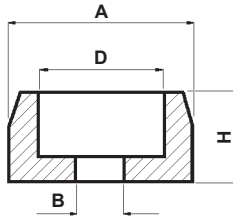
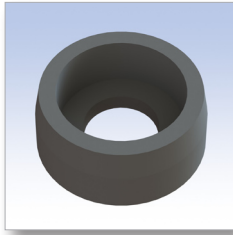
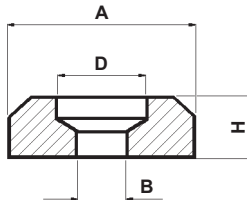
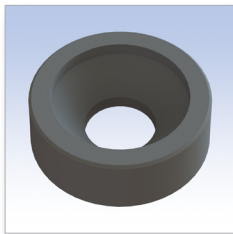


Tipo 1 Type 1



Tipo 2 Type 2



■ Materiale: PA 6.6 / Material: PA 6.6

■ Autoestinguenza: V2 (UL94) / UL Flammability: V2 (UL94)

■ Tutte le quote sono in mm. / All dimensions are in mm.

■ Colore: Nero / Colour: Black

| CODICE P/N | TIPO TYPE | DIMENSIONI SIZES | | | | NOTE NOTES | CONF. PKG. |
|---------------|--------------|---------------------|------|------|-----|---------------|---------------|
| | | A | B | D | H | | |
| | | | | | | | pz. / pcs. |
| 2882 AA01 | 1 | 7,8 | 3,2 | 5,6 | 3 | | 1.000 |
| 2883 AA01 | 1 | 9,8 | 4,2 | 7,2 | 3 | | 1.000 |
| 2884 AA01 | 1 | 11,8 | 5,3 | 8,8 | 5 | | 1.000 |
| 2885 AA01 | 1 | 13,9 | 6,3 | 10,5 | 6 | | 1.000 |
| 2890 AA01 | 1 | 13,8 | 6,5 | 12,6 | 2,6 | | 1.000 |
| 2886 AA01 | 1 | 17,9 | 8,4 | 13,5 | 8 | | 1.000 |
| 2887 AA01 | 1 | 21,9 | 10,5 | 16,5 | 10 | | 1.000 |
| | | | | | | | |
| 2897 AA01 | 2 | 8 | 3 | 6 | 2,6 | | 1.000 |
| 2898 AA01 | 2 | 10,7 | 4 | 8 | 3,5 | | 1.000 |
| 2899 AA01 | 2 | 13,4 | 5 | 10 | 4,4 | | 1.000 |
| 2900 AA01 | 2 | 16 | 6 | 12 | 5,2 | | 1.000 |
| 2901 AA01 | 2 | 21,4 | 8 | 16 | 7 | | 1.000 |
| 2902 AA01 | 2 | 26,8 | 10 | 20 | 8,8 | | 1.000 |