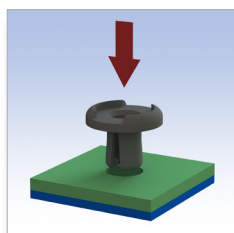
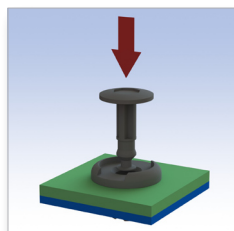


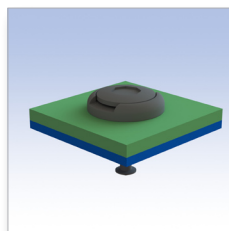
MODALITA' DI MONTAGGIO / HOW TO ASSEMBLE



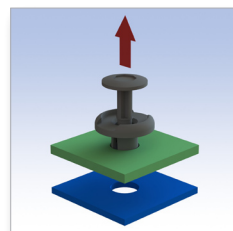
Inserire la parte femmina nei due fori.
Insert the female part into the two holes.



Spingere il maschio fino in fondo.
Push the male part right to the bottom.



Posizione di chiusura.
Closed position.



Per disaccoppiare i due pannelli, sganciare il maschio agendo con un utensile sotto la sua testa.
To uncouple the two panels, unhook the male part by using a tool under its head.

■ Materiale: PA 6.6 / Material: PA 6.6

■ Autoestinguenza: V2 (UL94) / UL Flammability: V2 (UL94)

■ Tutte le quote sono in mm. / All dimensions are in mm.

■ Colore: Nero / Colour: Black

CODICE P/N	TIPO TYPE	DIMENSIONI SIZES				PANNELLO PANEL		NOTE NOTES	CONF. PKG.
		A	C	H	L	foro/hole	Sp./Th.		
4731 AB01	1	12,2		2,2	17				2.500
4732 AA01	2	16	12,5	3,3	9,6	Ø 7,5 - 8	3 - 6,5		2.500