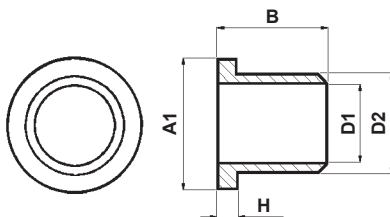
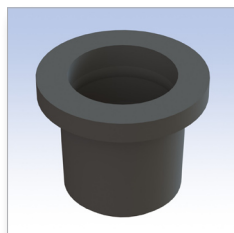
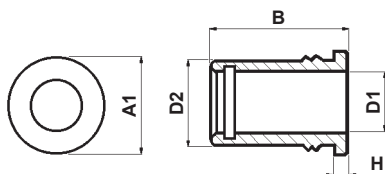


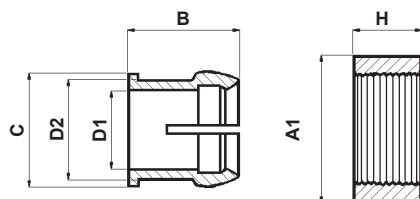
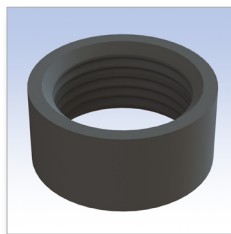
Tipo 1 Type 1



Tipo 2 Type 2



Tipo 3 Type 3



■ Materiale: PA 6.6 / Material: PA 6.6

■ Autoestinguenza: V2 (UL94) / UL Flammability: V2 (UL94)

■ Tutte le quote sono in mm. / All dimensions are in mm.

■ Colore: Nero / Colour: Black

CODICE P/N	TIPO TYPE	DIMENSIONI SIZES							NOTE NOTES	CONF. PKG. pz./pcs.
		A1	A2	B	C	D1	D2	H		
3008 AA01	1	8		6,5		5	6	1		1.000
3009 AA01	2	8,5		12		5	7	1		1.000
3007 AA01	3	9,3		6,7	7,7	5,1	6,3	4,2		1.000