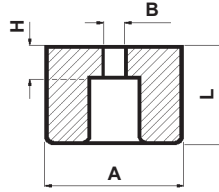
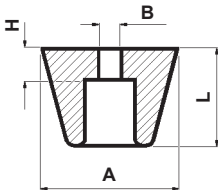
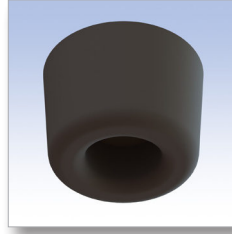
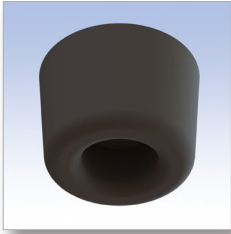


Tipo 1 *Type 1*

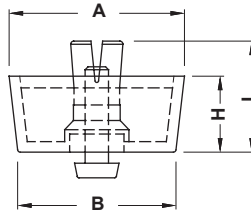
Tipo 2 *Type 2*



■ Materiale: Vedi tabella / See table

■ Tutte le quote sono in mm. / All dimensions are in mm.

CODICE P/N	TIPO TYPE	DIMENSIONI SIZES				MATERIALE MATERIAL	CONF. PKG.
		A	B	H	L		
1018 CA01	1	12	2,5	3,5	6,5	PVC MORBIDO / SOFT PVC	2.500
1024 CA01	1	12	3	3	8	PVC MORBIDO / SOFT PVC	2.500
1017 CA01	1	17,5	2	3,5	8	PVC MORBIDO / SOFT PVC	2.500
1014 CA01	1	19	3,5	4	10	PVC MORBIDO / SOFT PVC	2.500
1012 CA01	1	24	2,5	4	10	PVC MORBIDO / SOFT PVC	2.500
1013 CA01	1	21	3	3,5	10,5	PVC MORBIDO / SOFT PVC	2.500
1021 CA01	1	19	3	5	12	PVC MORBIDO / SOFT PVC	1.000
1022 CA01	1	19	4	5	12	PVC MORBIDO / SOFT PVC	1.000
1023 CA01	1	19	5	5	12	PVC MORBIDO / SOFT PVC	1.000
1011 CA01	1	29	4,5	6,5	12	PVC MORBIDO / SOFT PVC	1.500
1015 CA01	1	19	3,5	7	13	PVC MORBIDO / SOFT PVC	2.500
1016 CA01	1	18,5	4	12,5	18	PVC MORBIDO / SOFT PVC	2.500
1019 EA01	2	24	4	6	21	POLIETILENE PE-LD / POLYETHYLENE PE-LD	1.000
1020 EA01	2	24	5	6	21	POLIETILENE PE-LD / POLYETHYLENE PE-LD	1.000
4707 EA01	2	24	6	6	21	POLIETILENE PE-LD / POLYETHYLENE PE-LD	1.000
4708 EA01	2	24	7	6	21	POLIETILENE PE-LD / POLYETHYLENE PE-LD	1.000
						POLIETILENE PE-LD / POLYETHYLENE PE-LD	



■ **Materiale: PE / Material: PE**
■ **Materiale perno: PP / Pin material: PP**

■ **Colori: Nero / Colour: Black**
■ **Tutte le quote sono in mm. / All dimensions are in mm.**

Codici 6639EA01, 6640EA01, 5732EA01, 6643EA01, 6646EA01, 6647EA01, 6648EA01, 6649EA01 disponibili anche in TPR / Material: P/N 6639EA01, 6640EA01, 5732EA01, 6643EA01, 6646EA01, 6647EA01, 6648EA01, 6649EA01 available also in TPR.

CODICE P/N	DIMENSIONI SIZES				PANNELLO PANEL		NOTE NOTES	CONF. PKG. pz./pcs.
	A	B	H	L	foro/hole	Sp./Th.		
6638 EA01	20,8	19,8	6,4	11,8	Ø 8,0	1,0 - 2,5		500
6639 EA01	20,0	18,0	10,0	15,4	Ø 8,0	1,0 - 2,5		500
6272 EA01	23,7	19,5	13,7	19,2	Ø 8,0	1,0 - 2,5		250
6640 EA01	25,0	23,5	6,5	12,5	Ø 8,0	1,0 - 2,5		500
6641 EA01	30,0	27,7	12,8	18,8	Ø 8,0	1,0 - 2,5		200
6642 EA01	28,5	26,5	8,2	14,0	Ø 10,0	1,0 - 3,5		250
5732 EA01	12,7	12,0	4,4	8,5	Ø 5,0	1,0 - 2,0		1.000
6643 EA01	15,7	15,0	4,4	8,5	Ø 5,0	1,0 - 2,0		1.000
5736 EA01	20,0	18,6	4,0	7,0	Ø 8,0	1,0 - 2,0		500
6644 EA01	23,8	22,0	5,0	10,0	Ø 8,0	1,0 - 2,5		500
6645 EA01	31,5	28,5	7,8	13,6	Ø 10,0	1,0 - 3,5		250
6646 EA01	20,0	18,0	15,0	20,8	Ø 8,0	1,0 - 3,0		250
6647 EA01	20,0	18,0	18,0	24,3	Ø 8,0	0,8 - 1,0		250
5737 EA01	19,5	18,7	5,0	10,5	Ø 8,0	0,8 - 2,0		500
6648 EA01	29,4	26,5	15,0	23,0	Ø 10,0	1,0 - 3,5		200
6239 EA01	20,0	19,3	20,5	25,6	Ø 8,0	0,8 - 2,0		250
6649 EA01	19,2	17,2	7,9	12,1	Ø 8,0	0,8 - 1,2		500
5738 EA01	23,0	21,0	8,0	13,3	Ø 8,0	0,8 - 2,0		250
5740 EA01	24,0	20,0	10,5	15,8	Ø 8,0	0,8 - 2,0		250
5735 EA01	22,0	21,0	3,5	10,5	Ø 8,0	1,0 - 3,0		500
6650 EA01	26,7	24,8	16,0	21,0	Ø 8,0	1,0 - 3,0		250
6651 EA01	20,0	18,0	10,0	13,5	Ø 8,0	0,8 - 2,0		250
6652 EA01	27,0	26,0	6,9	12,0	Ø 10,0	0,8 - 2,0		250
6653 EA01	14,0	12,7	5,8	10,6	Ø 6,0	1,0 - 2,5		1.000
6654 EA01	22,0	20,0	3,5	10,5	Ø 8,0	1,0 - 3,0		500