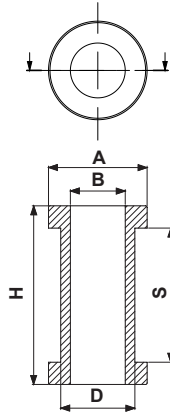


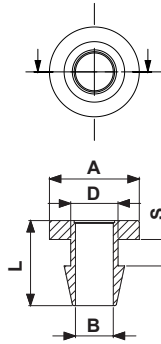
- Materiale: PVC / Material: PVC
- Colore: Nero / Colour: Black
- Tutte le quote sono in mm. / All dimensions are in mm.

| CODICE P/N | DIMENSIONI SIZES | | | | | NOTE NOTES | CONF. PKG. |
|---------------|---------------------|----|----|------|----|---------------|---------------------|
| | A | B | H | D | S | | |
| 4687 CA01 | 15 | 6 | 12 | 10 | 6 | | pz. / pcs. 1.000 |
| 1270 CA01 | 15 | 8 | 12 | 10 | 6 | | 1.000 |
| 1271 CA01 | 13,5 | 4 | 25 | 10 | 19 | | 1.000 |
| 1272 CA01 | 13,5 | 5 | 25 | 10 | 19 | | 1.000 |
| 1273 CA01 | 13,5 | 6 | 25 | 10 | 19 | | 1.000 |
| 1274 CA01 | 13,5 | 7 | 25 | 10 | 19 | | 1.000 |
| 1275 CA01 | 13,5 | 8 | 25 | 10 | 19 | | 1.000 |
| 1276 CA01 | 14 | 5 | 15 | 11 | 9 | | 1.000 |
| 1278 CA01 | 14 | 6 | 15 | 11 | 9 | | 1.000 |
| 1280 CA01 | 14 | 7 | 15 | 11 | 9 | | 1.000 |
| 1282 CA01 | 14 | 8 | 15 | 11 | 9 | | 1.000 |
| 1288 CA01 | 20 | 9 | 10 | 13 | 5 | | 1.000 |
| 1283 CA01 | 16 | 2 | 13 | 13 | 7 | | 1.000 |
| 1284 CA01 | 16 | 4 | 13 | 13 | 7 | | 1.000 |
| 5062 CA01 | 16 | 6 | 13 | 13 | 7 | | 1.000 |
| 5063 CA01 | 16 | 8 | 13 | 13 | 7 | | 1.000 |
| 5064 CA01 | 16 | 10 | 13 | 13 | 7 | | 1.000 |
| 2374 CA01 | 16 | 5 | 14 | 13,5 | 10 | | 1.000 |
| 2375 CA01 | 16 | 6 | 14 | 13,5 | 10 | | 1.000 |
| 2376 CA01 | 16 | 7 | 14 | 13,5 | 10 | | 1.000 |
| 2377 CA01 | 16 | 8 | 14 | 13,5 | 10 | | 1.000 |



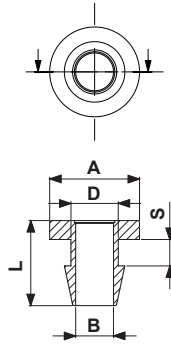
- **Materiale: PVC / Material: PVC**
- **Colore: Nero / Colour: Black**
- **Tutte le quote sono in mm. / All dimensions are in mm.**

| CODICE P/N | DIMENSIONI SIZES | | | | | NOTE NOTES | CONF. PKG. pz. / pcs. |
|---------------|---------------------|----|----|------|----|---------------|---------------------------------|
| | A | B | H | D | S | | |
| 2378 CA01 | 16 | 9 | 14 | 13,5 | 10 | | 1.000 |
| 2379 CA01 | 16 | 10 | 14 | 13,5 | 10 | | 1.000 |
| 2380 CA01 | 16 | 11 | 14 | 13,5 | 10 | | 1.000 |
| 2349 CA01 | 21 | 6 | 10 | 15 | 5 | | 1.000 |
| 2350 CA01 | 21 | 7 | 10 | 15 | 5 | | 1.000 |
| 2351 CA01 | 21 | 8 | 10 | 15 | 5 | | 1.000 |
| 2352 CA01 | 21 | 9 | 10 | 15 | 5 | | 1.000 |
| 2353 CA01 | 21 | 10 | 10 | 15 | 5 | | 1.000 |
| 2354 CA01 | 21 | 11 | 10 | 15 | 5 | | 1.000 |
| 2355 CA01 | 21 | 12 | 10 | 15 | 5 | | 1.000 |
| 2363 CA01 | 26 | 12 | 14 | 21 | 7 | | 1.000 |
| 2364 CA01 | 26 | 13 | 14 | 21 | 7 | | 1.000 |
| 2365 CA01 | 26 | 14 | 14 | 21 | 7 | | 1.000 |
| 2366 CA01 | 26 | 15 | 14 | 21 | 7 | | 1.000 |
| 2367 CA01 | 26 | 16 | 14 | 21 | 7 | | 1.000 |
| 2368 CA01 | 26 | 17 | 14 | 21 | 7 | | 1.000 |
| 2369 CA01 | 26 | 18 | 14 | 21 | 7 | | 1.000 |



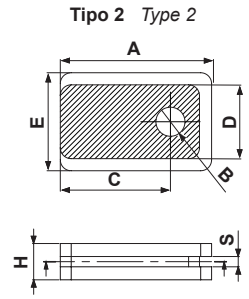
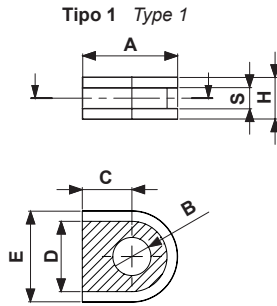
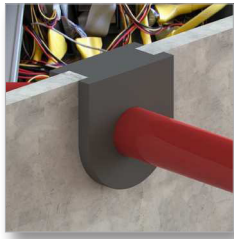
- Materiale: PVC / Material: PVC
- Colore: Nero / Colour: Black
- Tutte le quote sono in mm. / All dimensions are in mm.

| CODICE P/N | DIMENSIONI SIZES | | | | | NOTE NOTES | CONF. PKG. pz. / pcs. |
|---------------|---------------------|-----|---|---|-----|---------------|---------------------------------|
| | A | B | L | D | S | | |
| 4505 CA01 | 9,5 | 2 | 7 | 6 | 1 | | 1.000 |
| 4506 CA01 | 9,5 | 2 | 8 | 6 | 2 | | 1.000 |
| 4507 CA01 | 9,5 | 2 | 9 | 6 | 3 | | 1.000 |
| 0819 CA01 | 9,5 | 2,5 | 7 | 6 | 1 | | 1.000 |
| 4508 CA01 | 9,5 | 2,5 | 8 | 6 | 2 | | 1.000 |
| 4509 CA01 | 9,5 | 2,5 | 9 | 6 | 3 | | 1.000 |
| 0820 CA01 | 9,5 | 3 | 7 | 6 | 1 | | 1.000 |
| 4510 CA01 | 9,5 | 3 | 8 | 6 | 2 | | 1.000 |
| 4511 CA01 | 9,5 | 3 | 9 | 6 | 3 | | 1.000 |
| 0821 CA01 | 9,5 | 3,5 | 7 | 6 | 1 | | 1.000 |
| 4512 CA01 | 9,5 | 3,5 | 8 | 6 | 2 | | 1.000 |
| 4513 CA01 | 9,5 | 3,5 | 9 | 6 | 3 | | 1.000 |
| 4514 CA01 | 9,5 | 4 | 7 | 6 | 1 | | 1.000 |
| 4515 CA01 | 9,5 | 4 | 8 | 6 | 2 | | 1.000 |
| 4516 CA01 | 9,5 | 4 | 9 | 6 | 3 | | 1.000 |
| 4517 CA01 | 9,5 | 4,5 | 7 | 6 | 1 | | 1.000 |
| 4518 CA01 | 9,5 | 4,5 | 8 | 6 | 2 | | 1.000 |
| 4519 CA01 | 9,5 | 4,5 | 9 | 6 | 3 | | 1.000 |
| 1234 CA01 | 11 | 5 | 9 | 7 | 1,5 | | 1.000 |
| 0866 CA01 | 11 | 5 | 9 | 7 | 2 | | 1.000 |



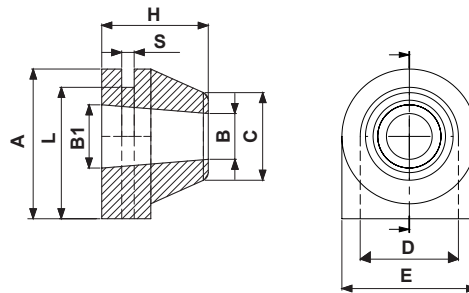
- **Materiale: PVC / Material: PVC**
- **Colore: Nero / Colour: Black**
- **Tutte le quote sono in mm. / All dimensions are in mm.**

| CODICE P/N | DIMENSIONI SIZES | | | | | NOTE NOTES | CONF. PKG. pz. / pcs. |
|---------------|---------------------|----|------|------|---|---------------|---------------------------------|
| | A | B | L | D | S | | |
| 3457 CA01 | 10 | 3 | 17,5 | 8 | 2 | | 1.000 |
| 3458 CA01 | 10 | 4 | 17,5 | 8 | 2 | | 1.000 |
| 3459 CA01 | 10 | 5 | 17,5 | 8 | 2 | | 1.000 |
| 3460 CA01 | 10 | 6 | 17,5 | 8 | 2 | | 1.000 |
| 3461 CA01 | 10 | 7 | 17,5 | 8 | 2 | | 1.000 |
| 3462 CA01 | 18 | 7 | 59 | 10,5 | 4 | | 1.000 |
| 3463 CA01 | 18 | 8 | 60 | 10,5 | 4 | | 1.000 |
| 0848 CA01 | 13,5 | 7 | 9 | 11 | 2 | | 1.000 |
| 1033 CA01 | 20 | 6 | 13 | 12 | 1 | | 1.000 |
| 1034 CA01 | 20 | 8 | 13 | 12 | 1 | | 1.000 |
| 1035 CA01 | 28 | 10 | 15 | 16 | 1 | | 1.000 |
| 1036 CA01 | 28 | 12 | 15 | 16 | 1 | | 1.000 |
| 1031 CA01 | 39 | 18 | 17 | 25 | 1 | | 1.000 |
| 1032 CA01 | 39 | 20 | 17 | 25 | 1 | | 1.000 |



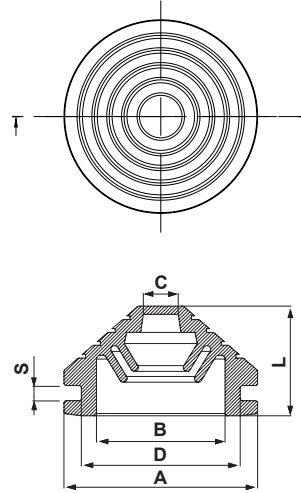
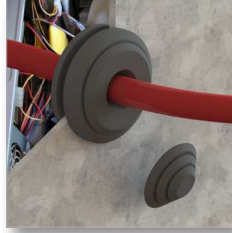
- Materiale: PVC / Material: PVC
- Colore: Nero / Colour: Black
- Tutte le quote sono in mm. / All dimensions are in mm.

| CODICE P/N | TIPO TYPE | DIMENSIONI SIZES | | | | | | | NOTE NOTES | CONF. PKG. |
|---------------|--------------|---------------------|-----|------|----|----|----|---|----------------------------|----------------|
| | | A | B | C | D | E | H | S | | |
| 4282 CA01 | 1 | 10 | 3 | 4 | 8 | 12 | 7 | 3 | | pz./pcs. 1.000 |
| 4688 CA01 | 1 | 23 | 8,5 | 12,5 | 17 | 22 | 10 | 5 | | 1.000 |
| 4281 CA01 | 1 | 23 | 10 | 12,5 | 17 | 22 | 10 | 5 | | 1.000 |
| 3550 CA01 MS | 1 | 33 | 14 | 19 | 20 | 28 | 7 | 2 | con membrana/with membrane | 1.000 |
| 4380 CA01 | 2 | 25 | 5 | | 12 | 16 | 6 | 2 | | 1.000 |
| 5331 CA01 | 2 | 25 | 7 | | 12 | 16 | 6 | 2 | | 1.000 |



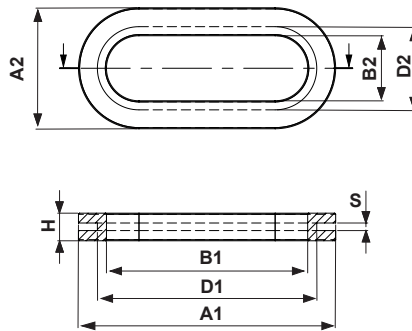
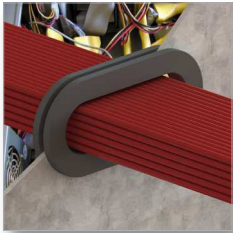
- Materiale: PVC / Material: PVC
- Colore: Nero / Colour: Black
- Tutte le quote sono in mm. / All dimensions are in mm.

| CODICE P/N | DIMENSIONI SIZES | | | | | | | | | NOTE NOTES | CONF. PKG. |
|---------------|---------------------|-----|-----|----|-----|----|----|------|---|---------------|------------------|
| | A | B | B1 | C | D | E | H | L | S | | |
| 4279 CA01 | 14,3 | 4 | 6 | 9 | 8,5 | 12 | 10 | 12,5 | 2 | | pz. / pcs. 1.000 |
| 4280 CA01 | 18 | 6,5 | 8,5 | 10 | 11 | 16 | 12 | 17 | 2 | | 1.000 |



- Materiale: PVC / Material: PVC
- Colore: Nero o bianco / Colour: Black or white
- Tutte le quote sono in mm. / All dimensions are in mm.

| CODICE P/N | DIMENSIONI SIZES | | | | | | NOTE NOTES | CONF. PKG. |
|---------------|---------------------|----|---|----|----|---|---------------|---------------------|
| | A | B | C | D | L | S | | |
| 4388 CA01 MS | 26 | 19 | 5 | 21 | 15 | 2 | | pz. / pcs. 1.000 |
| 4522 CA01 MS | 37 | 28 | 5 | 32 | 15 | 5 | | 1.000 |



- Materiale: PVC / Material: PVC
- Colore: Nero / Colour: Black
- Tutte le quote sono in mm. / All dimensions are in mm.

| CODICE P/N | DIMENSIONI SIZES | | | | | | | | NOTE NOTES | CONF. PKG. |
|---------------|---------------------|----|----|----|----|----|---|---|--|---------------|
| | A1 | A2 | B1 | B2 | D1 | D2 | H | S | | |
| 2425 CA01 | 35 | 14 | 31 | 10 | 34 | 13 | 5 | 1 | | 1.000 |
| 2426 CA01 | 69 | 32 | 55 | 18 | 59 | 22 | 7 | 2 | Disponibile con membrana/Available with membrane | 1.000 |
| 2427 CA01 | 74 | 32 | 62 | 20 | 66 | 25 | 7 | 2 | Disponibile con membrana/Available with membrane | 1.000 |
| 2428 CA01 | 77 | 33 | 63 | 19 | 69 | 25 | 7 | 2 | | 1.000 |