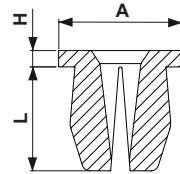
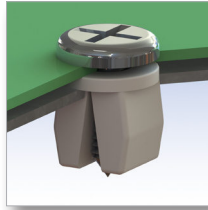
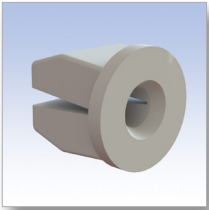
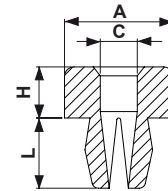
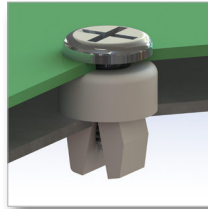
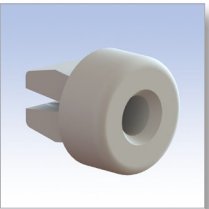


Tipo/Type 1



Tipo/Type 2



Tipo/Type 3

■ Materiale: PA 6.6 / Material: PA 6.6

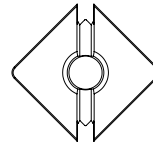
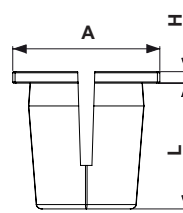
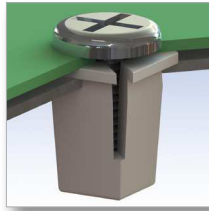
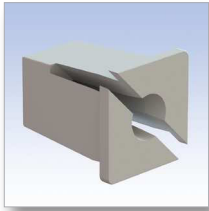
■ Autoestinguenza: V2 (UL94) / UL Flammability: V2 (UL94)

■ Tutte le quote sono in mm. / All dimensions are in mm.

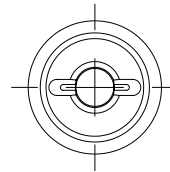
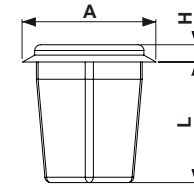
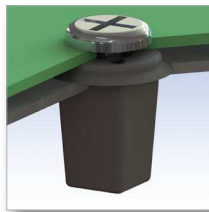
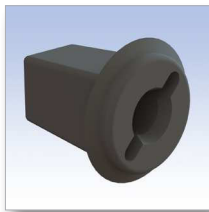
■ Colore: Naturale / Colour: Natural

CODICE P/N	TIPO TYPE	DIMENSIONI SIZES				PANELLO PANEL		VITE SCREW	NOTE NOTES	CONF. PKG.
		A	C	H	L	foro/hole	Sp./Th.			
0110 AA00	1	∅9		1,2	5,8	∅5,5	0,8 - 2	4 - 6 P		5.000
4702 AA00	1	∅9,5		0,8	4,5	∅6,2	0,8 - 1,5	6 - 8P		2.500
0111 AA00	1	∅9,5		0,8	7,2	∅6,2	0,8 - 3	6 - 8 P		3.000
4709 AA00	1	∅9,5		0,8	7,5	∅6,5	0,8 - 3	6 - 8P		2.500
0112 AA00	1	∅9,5		1	8	∅7	0,8 - 2,5	8 P		2.500
0108 AA00	2	∅8,5		1,2	5,5	∅4,5	0,8 - 2,5	6 P		2.500
0115 AA00	2	∅9,5		1	8	∅7	0,8 - 3	8 P		2.500
0116 AA00	2	∅13		1	8	∅7	0,8 - 3	8 - 10 P		2.500
0117 AA00	3	∅8,5	2,5	4	5,5	∅4,5	0,8 - 2,5	6 P		5.000
1092 AA00	3	∅8,5	2,5	5	5,5	∅4,5	0,8 - 2,5	6P		5.000
0118 AA00	3	∅7	3,8	3,5	7	∅6,5	0,8 - 3	6 - 8 P	Speciale/special	2.500
0120 AA00	3	∅12,5	8,5	4,5	8	∅7	0,8 - 3	8 - 10 P		2.500
0122 AA00	3	∅12,5	8,5	7	8	∅7	0,8 - 3	8 - 10 P		2.500
0123 AA00	3	∅12,5	8,5	10,5	8	∅7	0,8 - 3	8 - 10 P		2.500
0124 AA00	3	∅12,5	8,5	16	8	∅7	0,8 - 3	8 - 10 P		2.500
0954 AA00	3	∅12,5	8,5	20	8	∅7	0,8 - 3	8 - 10 P		2.500

Tipo/Type 1



Tipo/Type 2



**Materiale: PA 6.6 / Material: PA 6.6**

**Autoestinguenza: V2 (UL94) / UL Flammability: V2 (UL94)**

**Colore: Naturale o nero / Colour: Natural or black**

**Tutte le quote sono in mm. / All dimensions are in mm.**

■ **FC = Fondo chiuso / Closed bottom**

■ **ST = Madrevite stagna / Proof grommet**

■ **AC = Con alta coppia di avvitamento / Heavy duty tight screw grommet**

CODICE P/N	TIPO TYPE	DIMENSIONI SIZES			PANELLO PANEL		VITE SCREW	NOTE NOTES	CONF. PKG.
		A	H	L	foro/hole	Sp./Th.			
0093 AA00	1	∅9,5	1	11	∅7	0,5 - 2	8 P	FC	2.500
0098 AA00	1	∅9,5	1	11	∅7	0,5 - 2	8 P		2.500
3515 AA00	1	∅11	0,8	11,5	∅8	0,7 - 2	10 P		2.500
0101 AA00	1	∅12,5	1,2	18	∅9,5	0,5 - 2	8 - 10 P		2.000
0486 AA01	2	∅11,5	1,3	10,5	∅7	0,5 - 1	7 - 8 P	ST - AC	2.500