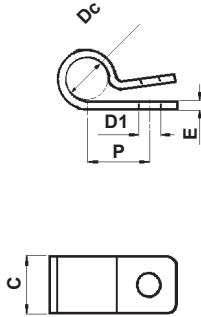
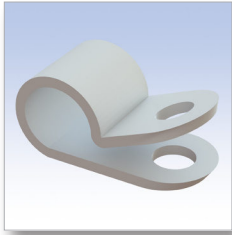
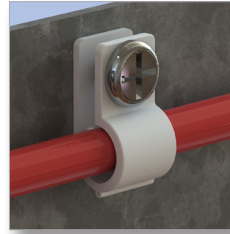
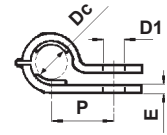
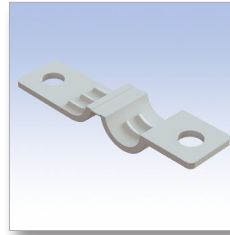


Tipo 1 *Type 1*



Tipo 2 *Type 2*



■ **Materiale: PA 6.6** / *Material: PA 6.6*

■ **Autoestinguenza: V2 (UL94)** / *UL Flammability: V2 (UL94)*

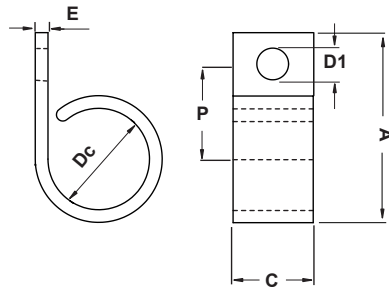
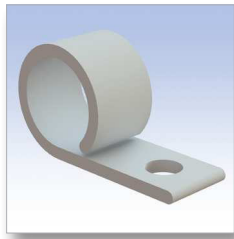
■ **Colore: Naturale** / *Colour: Natural*

■ **Dc = Diametro max. cavo chiuso** / *Max. closed cable diameter*

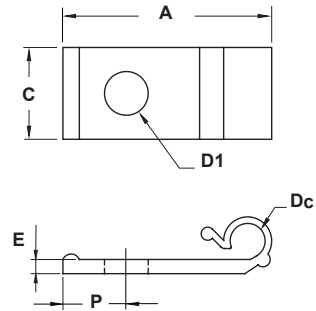
■ **Tutte le quote sono in mm.** / *All dimensions are in mm.*

CODICE P/N	TIPO TYPE	DIMENSIONI SIZES				Dc	NOTE NOTES	CONF. PKG. pz. / pcs.
		C	E	P	D1			
6569 AA00	1	9,5		12,0	3,2	8,3		1.000
6568 AA00	1	9,9		8,5	4,4	3,0		1.000
6571 AA00	1	9,9		7,75	4,4	4,5		1.000
6570 AA00	1	9,6		12,1	4,4	5,6		1.000
6572 AA00	1	10,0		9,9	4,3	6,5		1.000
6566 AA00	1	9,5		12,4	4,8	9,0		1.000
4734 AA00	1	9,1	1,3	8,2	5,5	3,3		1.000
4735 AA00	1	9,1	1,3	9,6	5,5	4,7		1.000
4736 AA00	1	9,1	1,3	10,3	5,5	6,4		1.000
4737 AA00	1	9,1	1,3	10,6	5,5	7,6		1.000
4738 AA00	1	9,1	1,3	11,9	5,5	9,2		1.000
4739 AA00	1	12,7	1,5	15	5,3	11,0		1.000
4740 AA00	1	12,7	1,5	15,8	5,3	12,1		1.000
4741 AA00	1	12,7	1,5	19,8	5,3	15,4		1.000
4742 AA00	1	12,7	1,5	21,4	5,3	17,8		1.000
4743 AA00	1	12,7	1,5	24,6	5,3	21,3		1.000
6567 AA00	1	12,9		23,5	5,4	24 - 27	Due fori / Two holes	1.000
0356 AA00	2	10,0	1,2	10	4,4	6,5		2.500

Tipo 1 Type 1

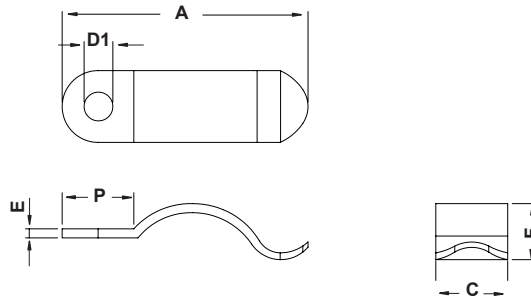


Tipo 2 Type 2



- **Materiale: PA 6.6** / Material: PA 6.6
- **Autoestinguenza: V2 (UL94)** / UL Flammability: V2 (UL94)
- **Colore: Naturale** / Colour: Natural
- **Dc = Diametro max. cavo chiuso** / Max. closed cable diameter
- **Tutte le quote sono in mm.** / All dimensions are in mm.

CODICE P/N	TIPO TYPE	DIMENSIONI SIZES					Dc	NOTE NOTES	CONF. PKG.
		A	C	E	P	D1			
6414 AA00	1	21,2	10,3	1,5	10,3	Ø 5,2	6,0		500
5498 AA00	1	35,0	10,2	1,3	9	Ø 5,2	9,2		1.000
6397 AA00	1	29,5	10,2	1,8	12,5	Ø 5	12,7		500
5499 AA00	1	30,0	12,7	2	17	Ø 5	16,0		1.000
6518 AA00	1	39,8	12,6	2,2		Ø 5,15	26		1.000
6517 AA00	2	19,1	8,4	1,3	5,8	Ø 4	3,2		1.000



- **Materiale: POM** / Material: POM
- **Autoestinguenza: V2 (UL94)** / UL Flammability: V2 (UL94)
- **Colore: Naturale** / Colour: Natural
- **Dc = Diametro max. cavo chiuso** / Max. closed cable diameter
- **Tutte le quote sono in mm.** / All dimensions are in mm.

CODICE P/N	DIMENSIONI SIZES						Dc	NOTE NOTES	CONF. PKG.
	A	C	E	F	P	D1			
6779 GA01	32,5	9,5	1,2	7,4	9,5	Ø 3,8	max 9,5		500