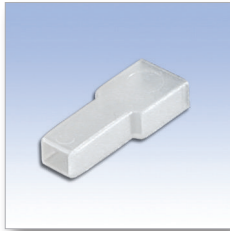
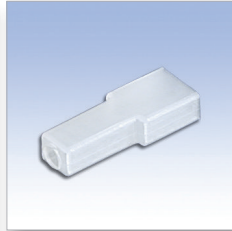


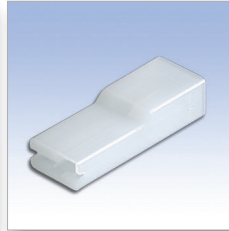
Tipo 1 *Type 1*



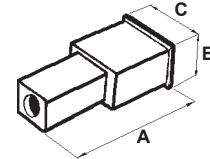
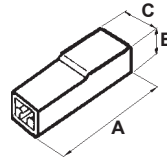
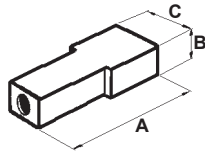
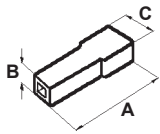
Tipo 2 *Type 2*



Tipo 3 *Type 3*



Tipo 4 *Type 4*

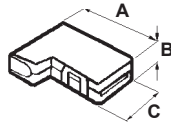


- **Materiale: PA 6.6 / Material: PA 6.6**
- **Autoestinguenza: V2 (UL94) / UL Flammability: V2 (UL94)**
- **Colore: Naturale / Colour: Natural**

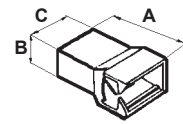
- **SR = Larghezza del terminale maschio / Width of groove terminal.**
- **Tutte le quote sono in mm. / All dimensions are in mm.**

CODICE P/N	TIPO TYPE	DIMENSIONI SIZES			SR	NOTE NOTES	CONF. PKG.
		A	B	C			
1147 AA00	1	18	4,2	7	4,8	Per terminale femmina / For groove terminal	5.000
0918 AA00	1	22	5	9	6,3	Per terminale femmina / For groove terminal	5.000
4730 AA00	2	18	4	5	2,8	Per terminale femmina / For groove terminal	5.000
1148 AA00	2	22	5	9	6,3	Per terminale femmina / For groove terminal	5.000
1868 AA00	3	20,5	6	6	2,8	Per terminale femmina / For groove terminal	5.000
1149 AA00	3	21	6	7,2	4,8	Per terminale femmina / For groove terminal	5.000
0917 AA00	3	25	6,5	9	6,3	Per terminale femmina / For groove terminal	5.000
1867 AA00	4	22	6	10,5	6,3	Per terminale maschio / For tongue terminal	5.000

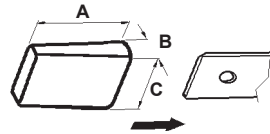
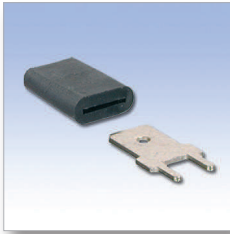
Tipo 1 Type 1



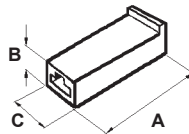
Tipo 2 Type 2



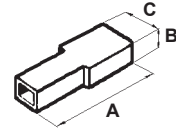
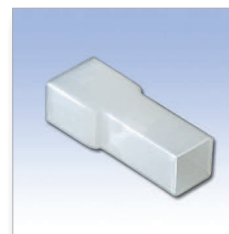
Tipo 3 Type 3



Tipo 4PF Type 4PF



Tipo 4PM Type 4PM



- Materiale: Vedi tabella / Material: See table
- Autoestinguenza: V2 (UL94) / UL Flammability: V2 (UL94)
- Colore: Naturale / Colour: Natural

- SR = Larghezza del terminale maschio / Width of groove terminal.
- Tutte le quote sono in mm. / All dimensions are in mm.

CODICE P/N	TIPO TYPE	DIMENSIONI SIZES			SR	NOTE NOTES	MATERIAL MATERIALS	CONF. PKG.
		A	B	C				
0919 AA00	1	18	5	10	6,3	Per terminale femmina / For groove terminal	PA 66	5.000
1151 AA00	2	18	5,3	10	6,3	Per terminale femmina / For groove terminal	PA 66	5.000
4441 CA01	3	13	3	9	6,3	Per terminale maschio / For tongue terminal	PVC	5.000
1152 AA00	4PF	32	6,5	10	6,3	Per terminale femmina / For groove terminal	PA 66	5.000
1153 AA00	4PM	32	9,5	12,5	6,3	Per terminale maschio / For tongue terminal	PA 66	5.000