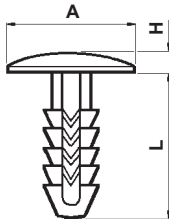
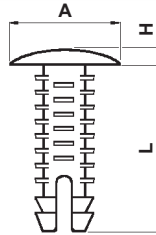
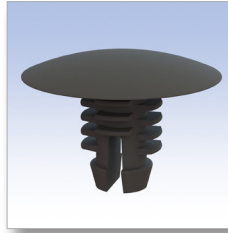


Tipo 1 Type 1



Tipo 2 Type 2



■ Materiale: PA 6.6 / Material: PA 6.6

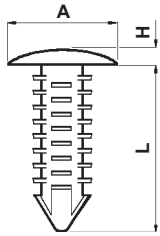
■ Autoestinguenza: V2 (UL94) / UL Flammability: V2 (UL94)

■ Tutte le quote sono in mm. / All dimensions are in mm.

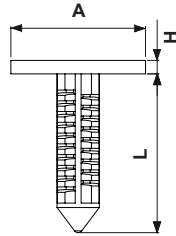
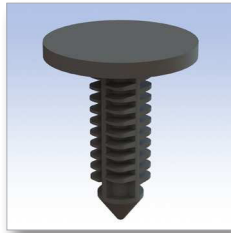
■ Colore: Nero / Colour: Black

CODICE P/N	TIPO TYPE	DIMENSIONI SIZES			PANNELLO PANEL		NOTE NOTES	CONF. PKG.
		A	H	L	foro/hole	Sp./Th.		
0489 AA01	1	15	2	12,3	Ø 6,5 - 7,5	2,5 - 7,5		pz./pcs. 2.500
0263 AA01	1	20	2	23	Ø 6,5 - 7,5	5,5 - 17,5		2.500
0296 AA01	2	11x18	3	15	Ø 6,5	1 - 9		2.500
0270 AA01	2	18	2	10	Ø 6,5	0,8 - 5		2.500
0932 AA01	2	18	2	19	Ø 6,5	0,8 - 11		2.500
0271 AA01	2	18	2	28	Ø 6,9	1 - 20		2.500
0272 AA01	2	18	2	25	Ø 8	1 - 16		2.500

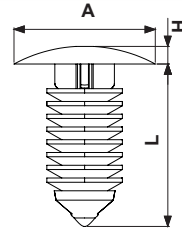
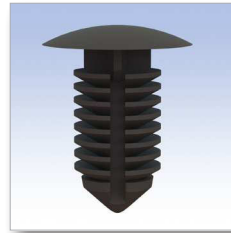
Tipo 1 Type 1



Tipo 2 Type 2



Tipo 3 Type 3



■ Materiale: PA 6.6 / Material: PA 6.6

■ Autoestinguenza: V2 (UL94) / UL Flammability: V2 (UL94)

■ Tutte le quote sono in mm. / All dimensions are in mm.

■ Colore: Nero / Colour: Black

CODICE P/N	TIPO TYPE	DIMENSIONI SIZES			PANNELLO PANEL		NOTE NOTES	CONF. PKG.
		A	H	L	foro/hole	Sp./Th.		
0268 AA01	1	8	1,7	17	Ø 3,8	3,5 - 12		2.500
8216 AA01	1	12,7	1,5	23,6	Ø 6,0	3,5 - 19,0		2.500
8217 AA01	1	12,5	2,5	37,8	Ø 6,4	0,9 - 26,5		2.500
5421 AA01	1	13	1,8	19	Ø 6,5	2,5 - 14		2.500
8222 AA01	1	18,0	2,0	27,3	Ø 7,0	0,7 - 20,0		2.500
8223 AA01	1	30,3	2,2	34,8	Ø 7,0	2,5 - 25,0		2.500
8210 AA01	2	5,5	1,5	17,0	Ø 3,0	4,0 - 12,0		2.500
8211 AA01	2	5,5	1,0	18,5	Ø 3,2	4,0 - 16,5	Testa tonda / Round head	2.500
8215 AA01	2	16,5	2,0	11,5	Ø 5,0	1,2 - 6,0	Testa tonda / Round head	2.500
8213 AA01	2	10,7	1,0	12,7	Ø 5,0	1,7 - 8,0		2.500
8214 AA01	3	15,0	1,5	17,7	Ø 5,0	2,0 - 12,0		2.500
8212 AA01	3	11,0	1,7	17,3	Ø 4,8	0,7 - 13,0		2.500
8218 AA01	3	17,8	2,4	15,5	Ø 6,0 - 6,3	2,3 - 8,9		2.500
8219 AA01	3	17,8	2,4	20,4	Ø 6,0 - 6,3	2,5 - 12,0		2.500
8221 AA01	3	19,1	0,9	15,9	Ø 6,4	2,7 - 7,3	Testa piatta / Flat head	2.500
8220 AA01	3	17,8	2,5	35,1	Ø 6,4	10,7 - 28,8		2.500
8224 AA01	3	19,0	2,0	30,5	Ø 7,2	1,5 - 25,4		2.500
8225 AA01	3	16,6	2,1	19,1	Ø 8,7	1,4 - 13,0		2.500
8226 AA01	3	21,2	4,0	28,2	Ø 10,0	1,5 - 21,2		2.500