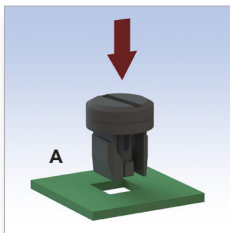
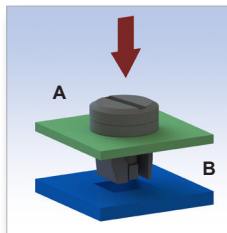


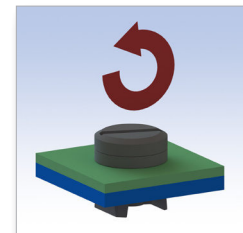
**MODALITA' DI MONTAGGIO / HOW TO ASSEMBLE**



**Inserire a scatto il componente nel foro quadrato del pannello A**  
*Snap the anchor into square hole in panel A*



**Sovrapporre e unire i pannelli A e B inserendo il componente nel foro del pannello B**  
*Join A on B and insert the anchor into the square hole on panel B*



**Ruotare la testa del componente di 90° in senso antiorario**  
*Turn the head of the latch through 90° anti-clockwise to lock*

**Per lo smontaggio, ruotare la testa di fissaggio del componente di 90° in senso orario / To disassemble turn the head of the latch through 90° clockwise**

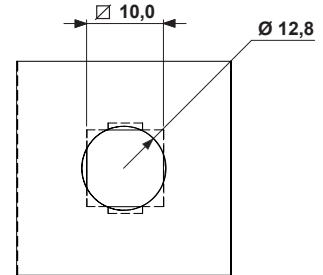
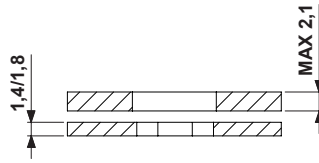
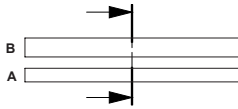
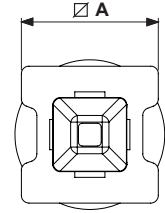
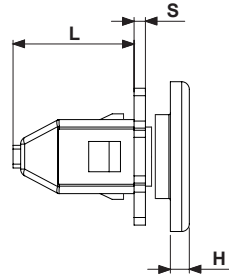
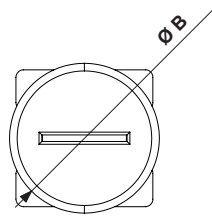
■ **Materiale: PA 6.6 / Material: PA 6.6**

■ **Autoestinguenza: V2 (UL94) / UL Flammability: V2 (UL94)**

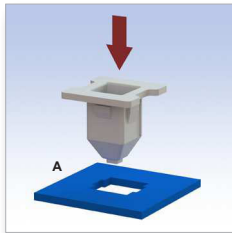
■ **Tutte le quote sono in mm. / All dimensions are in mm.**

■ **Colore: Nero/naturale / Colour: Black/Natural**

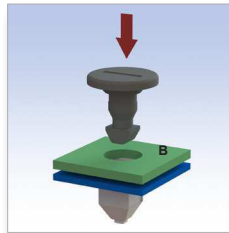
CODICE P/N	DIMENSIONI SIZES						NOTE NOTES	CONF. PKG.
	A	B	C	H	L	S		pz./pcs.
<b>8093 AA01</b>	9,0	15,0	10,3	6,0	11,0	2,0		1.000



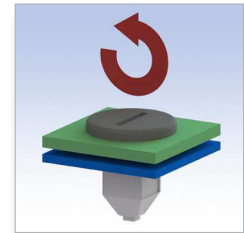
**MODALITA' DI MONTAGGIO / HOW TO ASSEMBLE**



Inserire a scatto il componente nel foro quadrato del pannello A  
 Snap the body into square hole in panel A



Sovrapporre e unire i pannelli A e B inserendo il perno nel foro del pannello B  
 Join A on B and insert the pin into the round hole on panel B



Ruotare la testa del componente di 90° in senso antiorario  
 Turn the head of the latch through 90° anti-clockwise to lock

Per lo smontaggio, ruotare la testa di fissaggio del componente di 90° in senso orario. Il componente è progettato per accettare due differenti spessori del pannello. Ruotare il corpo di 90° per pannello con differente spessore.  
 To disassemble turn the head of the latch through 90° clockwise. The part is designed for two different panel ranges. 90° Rotation of body for different panel thickness.

■ Materiale: PA 6.6 / Material: PA 6.6

■ Autoestinguenza: V2 (UL94) / UL Flammability: V2 (UL94)

■ Tutte le quote sono in mm. / All dimensions are in mm.

■ Colore: Nero/naturale / Colour: Black/Natural

CODICE P/N	DIMENSIONI SIZES					NOTE NOTES	CONF. PKG.
	A	B	H	L	S		
8094 AA01	18,1	19,8	2,5	16,0	1,5	Corpo (naturale) - Perno (nero) / Body (natural) - Pin (nero)	1.000
							pz./pcs.