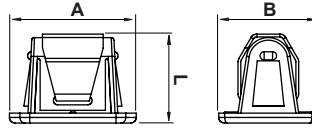
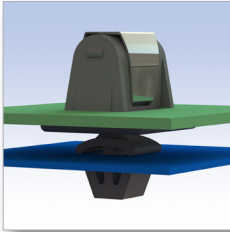
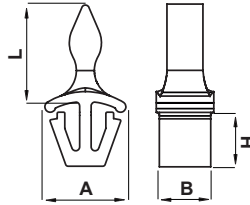
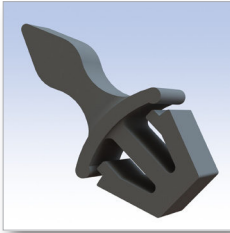


Tipo 1F Type 1F



Tipo 1M Type 1M



APPLICAZIONE / APPLICATION

■ Materiale: PA 6.6 / Material: PA 6.6

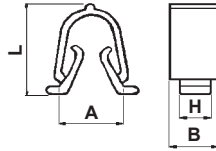
■ Autoestinguenza: V2 (UL94) / UL Flammability: V2 (UL94)

■ Tutte le quote sono in mm. / All dimensions are in mm.

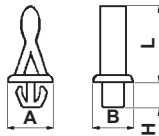
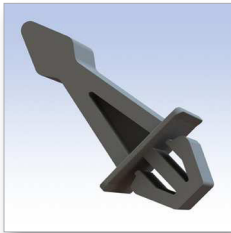
■ Colore: Nero / Colour: Black

CODICE P/N	TIPO TYPE	DIMENSIONI SIZES				PANNELLO PANEL		NOTE NOTES	CONF. PKG.
		A	B	H	L	foro/hole	Sp./Th.		
0191 AA01 GS	1F	20	18		15,5	16,7x13	1,5		1.000
5589 AA01	1M	11	11	5	12,5	7x7	0,5 - 1,5		1.000

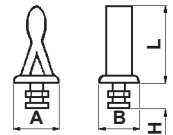
Tipo 1F Type 1F



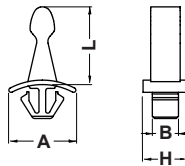
Tipo 1MA Type 1MA



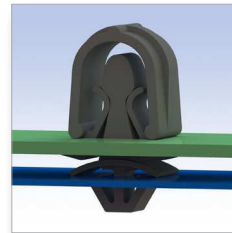
Tipo 1MB Type 1MB



Tipo 1MC Type 1MC



APPLICAZIONE / APPLICATION



- Materiale: PA 6.6 / Material: PA 6.6
- Autoestinguenza: V2 (UL94) / UL Flammability: V2 (UL94)
- Colore: Nero / Colour: Black

■ Tutte le quote sono in mm. / All dimensions are in mm.

CODICE P/N	TIPO TYPE	DIMENSIONI SIZES				PANNELLO PANEL		D	NOTE NOTES	CONF. PKG.
		A	B	H	L	foro/hole	Sp./Th.			
0193 AA01	1F	19	12	7,5	21	8x10,5	0,8 - 1,2	1		1.000
0194 AA01	1MA	11	11	6,5	18	6x6	0,8 - 1,0	1		1.000
2468 AA01	1MB	11,2	10,6	8	18	---		1		1.000
6600 AA01	1MC	15	5,8	10	17	6x6	0,8 - 1,2			1.000